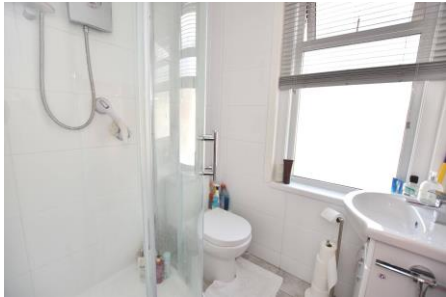


Sydney Road, Gosport,
Hampshire, PO12 1PL

£229,995



Middle Terraced House
Lounge / Dining Room
10' 10 x 7' 1 Kitchen
PVCu Double Glazing
No Forward Chain

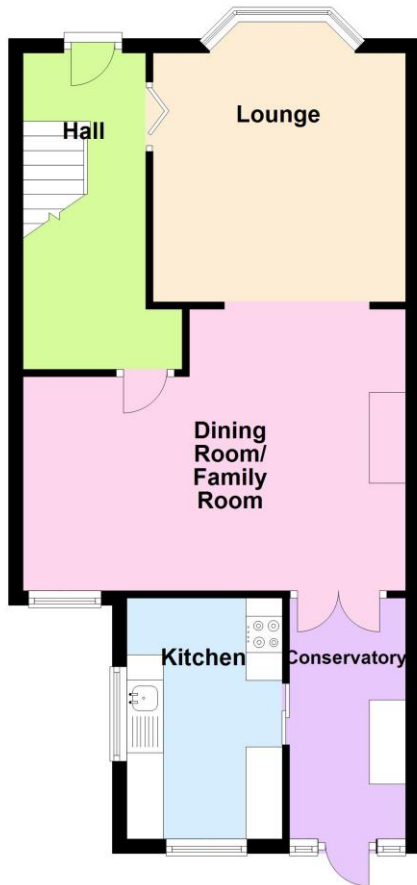
Three Bedrooms
Additional Lounge
First Floor Shower Room
Detached Garage

023 9258 5588

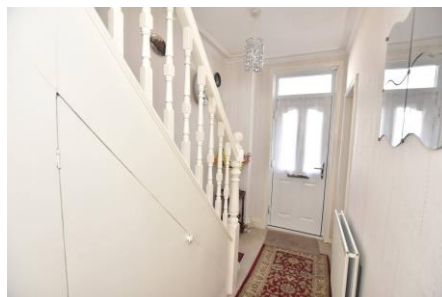
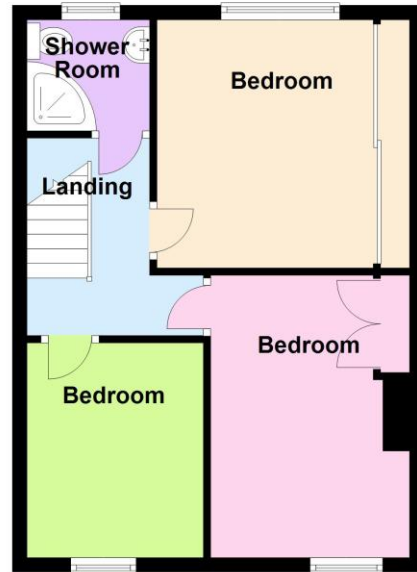
6 Stokesway, Stoke Road, Gosport, Hants, PO12 1PE
Email: office@dimon-estate-agents.co.uk

To view all our properties visit:
www.GosportProperty.com

Ground Floor



First Floor



**SELLING YOUR OWN PROPERTY IN GOSPORT?
WE ARE A FAMILY RUN BUSINESS SELLING HOMES IN GOSPORT FOR 50 YEARS
AND WOULD WELCOME THE OPPORTUNITY TO BE CHOSEN AS YOUR ESTATE AGENT**

2nd Lounge

13'7" (4.14m) Into Bay x 11'5" (3.48m) PVCu double glazed window, double radiator, coved ceiling.

Lounge / Dining Room

17'3" (5.26m) x 12'9" (3.89m) narrowing to 9'4" (2.84), French doors to side lean-to, PVCu double glazed window, 4 wall lights, radiator, gas fire with back boiler.

Kitchen

10'10" (3.3m) x 7'1" (2.16m) Single drainer stainless steel sink unit, wall and base units with worksurface over, electric cooker point, 2 PVCu double glazed windows, sliding door to:

Side Lean-To

11'10" (3.61m) x 5'2" (1.57m) Plumbing for washing machine, space for fridge/freezer, PVCu double glazed windows and door to garden, polycarbonate roof.

ON THE 1ST FLOOR

Landing

Access to loft space.

Bedroom 1

11'2" (3.4m) x 9'2" (2.79m) To Wardrobe PVCu double glazed window, built in wall to wall wardrobe, coved ceiling.

Bedroom 2

12'8" (3.86m) x 9'0" (2.74m) PVCu double glazed window, radiator, airing cupboard.

Bedroom 3

9'7" (2.92m) x 7'10" (2.39m) PVCu double glazed window, radiator, coved ceiling.

Shower Room

White suite of shower cubicle with electric shower, low level W.C., vanity hand basin with cupboard under, PVCu double glazed window, tiled walls, chrome heated towel rail.

OUTSIDE

Front Garden

With wall and iron gate, laid to slate chippings.

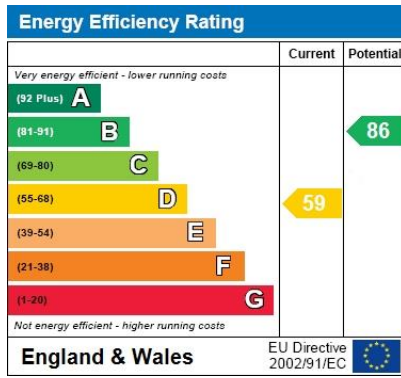
Rear Garden

With artificial grass, flower and shrub borders, timber shed, rear pedestrian gate to service road.

Garage

17'2" (5.23m) x 8'10" (2.69m) Block built construction with cantilever door, personal door to garden, accessed from rear service road.





Full Energy Performance Certificate available upon request

Appointment		
Date:	Time:	Person Meeting:
Viewing Notes		

These particulars, whilst believed to be accurate, are set out as a general outline for guidance and do not constitute any part of an offer or contract. Please note we have not tested any apparatus, fixtures, fittings, or services. Interested parties must undertake their own investigation into the working order of these items.

All measurements are approximate. Floor Plans are obtained from a third party and may contain inaccuracies. Photographs are for guidance only and may change over the course of marketing. Information provided on lease terms, maintenance and ground rent have been provided by the vendor and you should ask your legal representative to confirm this information before exchanging contracts.