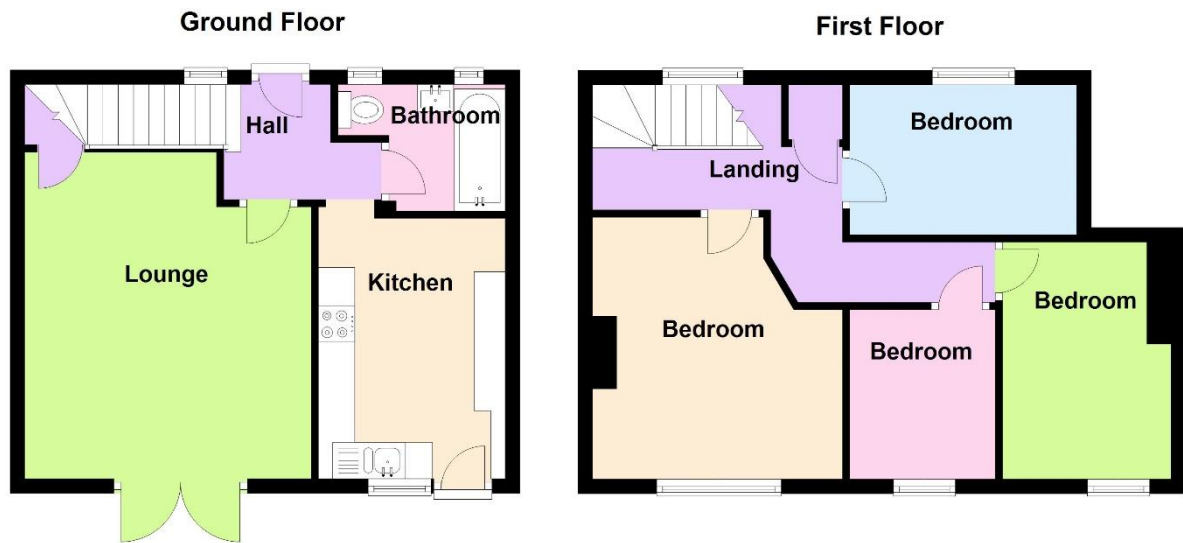




Greenway Road, Elson, Gosport, Hampshire, PO12 4RG
£237,000 Freehold





Measurements

Entrance Hall

Lounge 12'11" (3.94m) x 12'0" (3.66m)

Kitchen 11'8" (3.56m) x 8'5" (2.57m)

Bathroom

ON THE 1ST FLOOR

Landing

Bedroom 1 11'10" (3.61m) x 11'4" (3.45m)

Bedroom 2 10'3" (3.12m) x 6'11" (2.11m)

Bedroom 3 10'9" (3.28m) x 7'7" (2.31m)

Bedroom 4 7'8" (2.34m) x 6'11" (2.11m)

OUTSIDE

Front Garden Parking

Rear Garden

Selling? Can we help?



Main Features

Middle Terraced house

Four Bedrooms

Lounge

11`8 x 8`5 Kitchen

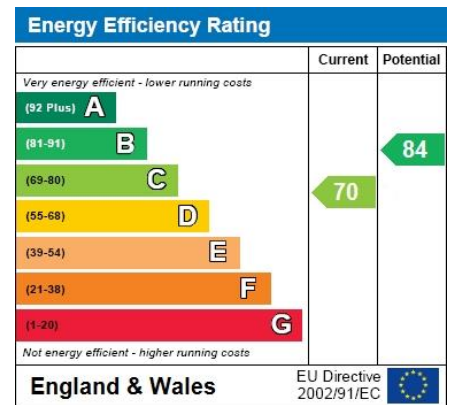
Re-Fitted Bathroom

PVCu Double Glazing

Gas Gentral Heating

Rear Garden Of Sunny Aspect

Off Road Parking



A middle terraced house with 4 bedrooms. The accommodation offers a lounge with French doors leading out to the rear garden which is of a sunny aspect. The kitchen which also has a door to the garden is 11`8 x 8`5 with a range wall and base units and integral cooker. The bathroom has been re-fitted. The property benefits from having gas central heating and PVCu double glazing installed. Outside the front garden has parking for 2 cars.



Family Business Established 1969



Property Information

Council Tax Band B

Freehold



These particulars, whilst believed to be accurate, are set out as a general outline for guidance and do not constitute any part of an offer or contract. Please note we have not tested any apparatus, fixtures, fittings, or services. Interested parties must undertake their own investigation into the working order of these items. All measurements are approximate. Floor Plans are obtained from a third party and may contain inaccuracies. Photographs are for guidance only and may change over the course of marketing. Information provided on lease terms, maintenance and ground rent have been provided by the vendor and you should ask your legal representative to confirm this information before exchanging contracts.

Further Properties Wanted

