

Repton Close, Alverstoke,
Gosport, Hampshire, PO12 2RY

£318,500



Semi Detached House
Three Bedrooms
Separate Dining Room
Ground Floor Cloakroom
Garage

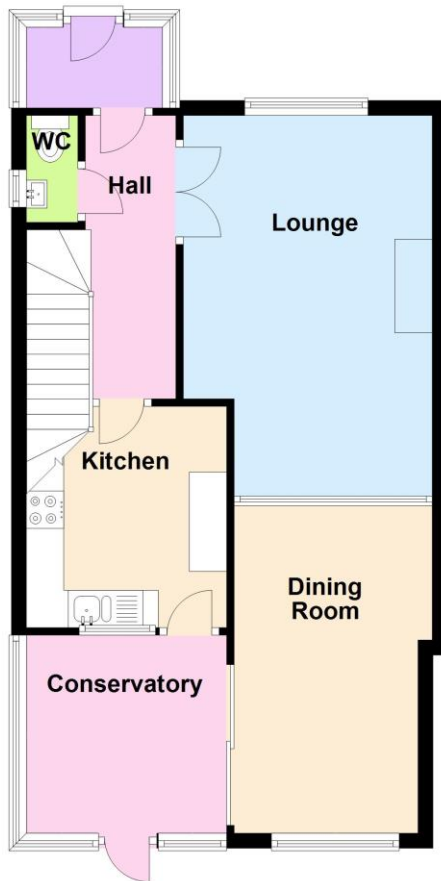
Extended Accommodation
Lounge
Conservatory
Modern First Floor Shower Room
No Forward Chain

023 9258 5588

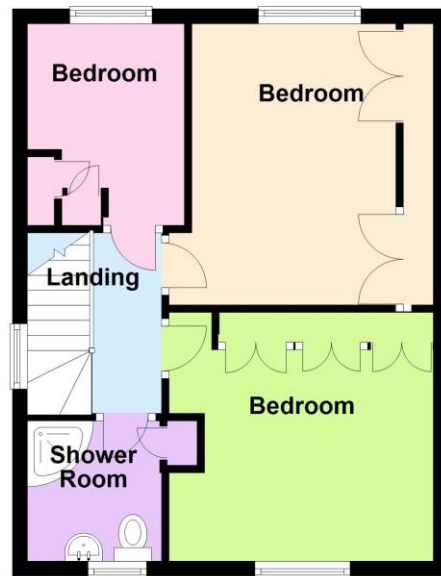
6 Stokesway, Stoke Road, Gosport, Hants, PO12 1PE
Email: office@dimon-estate-agents.co.uk

To view all our properties visit:
www.GosportProperty.com

Ground Floor



First Floor

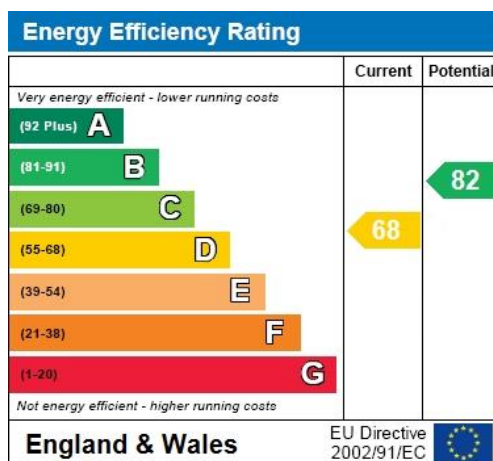


SELLING YOUR OWN PROPERTY IN GOSPORT?
WE ARE A FAMILY RUN BUSINESS SELLING HOMES IN GOSPORT FOR 54 YEARS
AND WOULD WELCOME THE OPPORTUNITY TO BE CHOSEN AS YOUR ESTATE AGENT

Entrance Porch	PVCu double glazed front door and windows, ceramic tiled floor, Georgian style glazed inner door to:
Entrance Hall	Radiator, coved ceiling, stairs to first floor, understairs meter cupboard.
Cloakroom	With W.C., hand basin, aluminium double glazed window, wall mounted gas central heating boiler, tiled walls.
Lounge	17'2" (5.23m) x 11'3" (3.43m) Aluminium double glazed window, marble style fireplace with living flame gas fire, coved ceiling, double radiator.
Dining Room	14'3" (4.34m) x 8'0" (2.44m) Aluminium double glazed window, PVCu double glazed patio door to conservatory, radiator.
Kitchen	9'9" (2.97m) x 8'9" (2.67m) 1 1/2 bowl stainless steel sink unit, wall and base units with worksurface over, built in oven and microwave, 4 ring electric hob with cooker extractor canopy over, space for fridge/freezer, plumbing for washing machine, breakfast bar, radiator, tiled splashbacks, ceramic tiled floor, plumbing for dishwasher, glazed door to:
Conservatory	8'10" (2.69m) x 8'4" (2.54m) PVCu double glazed window and door, polycarbonate roof, ceramic tiled floor.
ON THE 1ST FLOOR	
Landing	Access to loft space, aluminium double glazed window.
Bedroom 1	12'4" (3.76m) x 9'0" (2.74m) To Wardrobe Aluminium double glazed window, double radiator, built in cupboards and dressing table unit, coved ceiling.
Bedroom 2	9'9" (2.97m) Plus Recess x 8'5" (2.57m) To Wardrobe To Cupboards, Plus Recess, Aluminium double glazed window, radiator, built in cupboards and dressing table unit.
Bedroom 3	9'3" (2.82m) x 7'3" (2.21m) Aluminium double glazed window, fitted cupboards, radiator.
Shower Room	White suite of shower cubicle, vanity hand basin with cupboard under, low level W.C. with concealed cistern, aluminium double glazed window, ceramic tiled floor, tiled walls, chrome heated towel rail, airing cupboard.
OUTSIDE	
Front Garden	With shrubs and plants, side pedestrian access to:
Rear Garden	With patio, lawn and flower borders, concrete panelled shed/workshop with light and power.
Garage	In block nearby.
Tenure	Freehold.

Council Tax

Band C.



Full Energy Performance Certificate
available upon request

Appointment

Date:

Time:

Person Meeting:

Viewing Notes

These particulars, whilst believed to be accurate, are set out as a general outline for guidance and do not constitute any part of an offer or contract. Please note we have not tested any apparatus, fixtures, fittings, or services. Interested parties must undertake their own investigation into the working order of these items.

All measurements are approximate. Floor Plans are obtained from a third party and may contain inaccuracies. Photographs are for guidance only and may change over the course of marketing. Information provided on lease terms, maintenance and ground rent have been provided by the vendor and you should ask your legal representative to confirm this information before exchanging contracts.