

Tukes Avenue, Bridgemary, Gosport,
Hampshire, PO13 0SD

£299,950



Semi Detached House

Lounge

Ground Floor W.C.

Driveway & Garage

Gas Central Heating

Three Bedrooms

Spacious Kitchen

First Floor Bathroom

PVCu Double Glazing

023 9258 5588

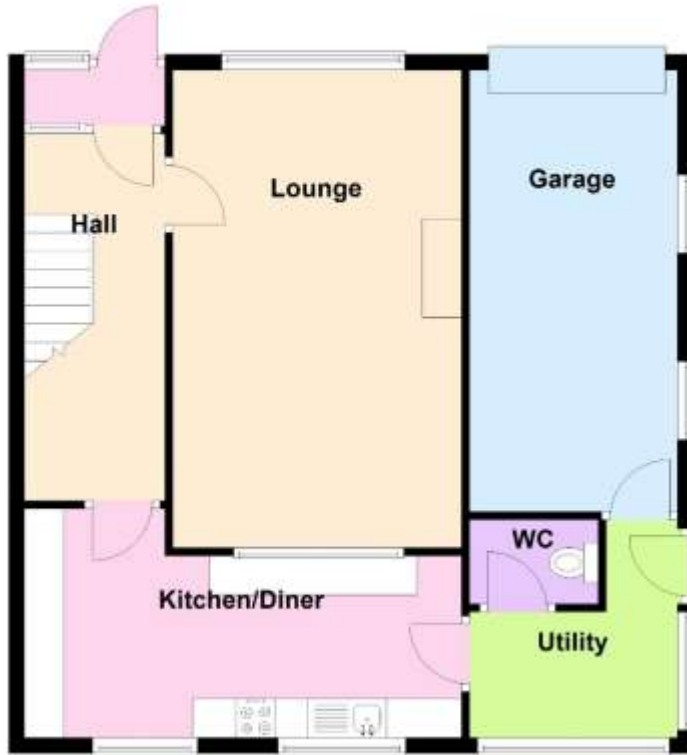
6 Stokesway, Stoke Road, Gosport, Hants, PO12 1PE

Email: office@dimon-estate-agents.co.uk

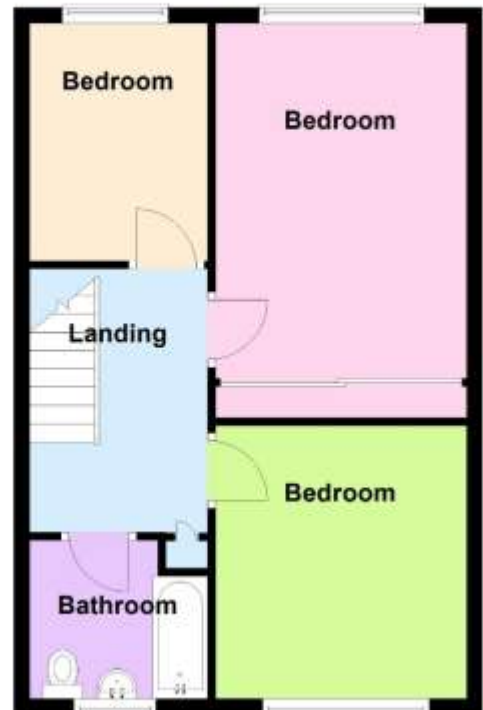
To view all our properties visit:

www.GosportProperty.com

Ground Floor



First Floor

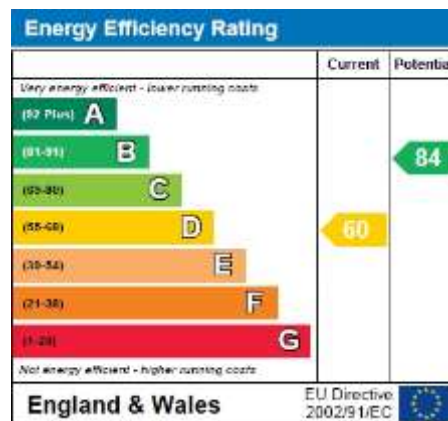


SELLING YOUR OWN PROPERTY IN GOSPORT?
WE ARE A FAMILY RUN BUSINESS SELLING HOMES IN GOSPORT FOR 55 YEARS
AND WOULD WELCOME THE OPPORTUNITY TO BE CHOSEN AS YOUR ESTATE AGENT

| | |
|-----------------------|--|
| Entrance Porch | PVCu double glazed front door and window, PVCu double glazed inner door to: |
| Entrance Hall | With stairs to first floor, understairs recess. |
| Lounge | 19'11" (6.07m) x 12'0" (3.66m) PVCu double glazed window, radiator. |
| Kitchen / Dining Room | 18'2" (5.54m) x 9'8" (2.95m) widening to 9'8" (2.95m), Single drainer stainless steel sink unit, wall and base units with worksurface over, 2 PVCu double glazed windows, gas cooker point, plumbing for washing machine, tiled splashbacks, floor mounted central heating boiler, double radiator, space for fridge and separate freezer, ceramic tiled floor, tiled walls. |
| Rear Lobby | With door to garden, door to garage. |
| W.C Off | With W.C., tiled floor. |
| ON THE 1ST FLOOR | |
| Landing | Access to loft space. |
| Bedroom 1 | 14'3" (4.34m) To Wardrobe x 10'9" (3.28m) PVCu double glazed window, radiator, built in wardrobes. |
| Bedroom 2 | 11'11" (3.63m) x 10'7" (3.23m) PVCu double glazed window, radiator. |
| Bedroom 3 | 9'10" (3m) x 7'4" (2.24m) PVCu double glazed window, radiator. |
| Bathroom | 7'5" (2.26m) x 6'7" (2.01m) Bath with mixer tap and shower attachment, pedestal hand basin, W.C., PVCu double glazed window, tiled splashbacks, radiator. |
| OUTSIDE | |
| Front Garden | Paved with borders, concrete path, side gate to rear garden, car hardstanding leading to: |
| Attached Garage | 20'6" (6.25m) x 8'8" (2.64m) Cantilever door, light and power. |
| Rear Garden | Patio, lawn and borders, timber shed. |
| Services | We understand that this property is connected to mains gas, electric, water and sewage. |
| Tenure | Freehold. |
| Council Tax | Band C. |

Property Information

For information on broadband speed and mobile phone coverage for this property visit: <https://checker.ofcom.org.uk>
For flood risk information visit: <https://www.gov.uk/check-long-term-flood-risk>



Full Energy Performance Certificate
available upon request

Appointment

Date:

Time:

Person Meeting:

Viewing Notes

These particulars, whilst believed to be accurate, are set out as a general outline for guidance and do not constitute any part of an offer or contract. Please note we have not tested any apparatus, fixtures, fittings, or services. Interested parties must undertake their own investigation into the working order of these items.

All measurements are approximate. Floor Plans are obtained from a third party and may contain inaccuracies. Photographs are for guidance only and may change over the course of marketing. Information provided on lease terms, maintenance and ground rent have been provided by the vendor and you should ask your legal representative to confirm this information before exchanging contracts.