

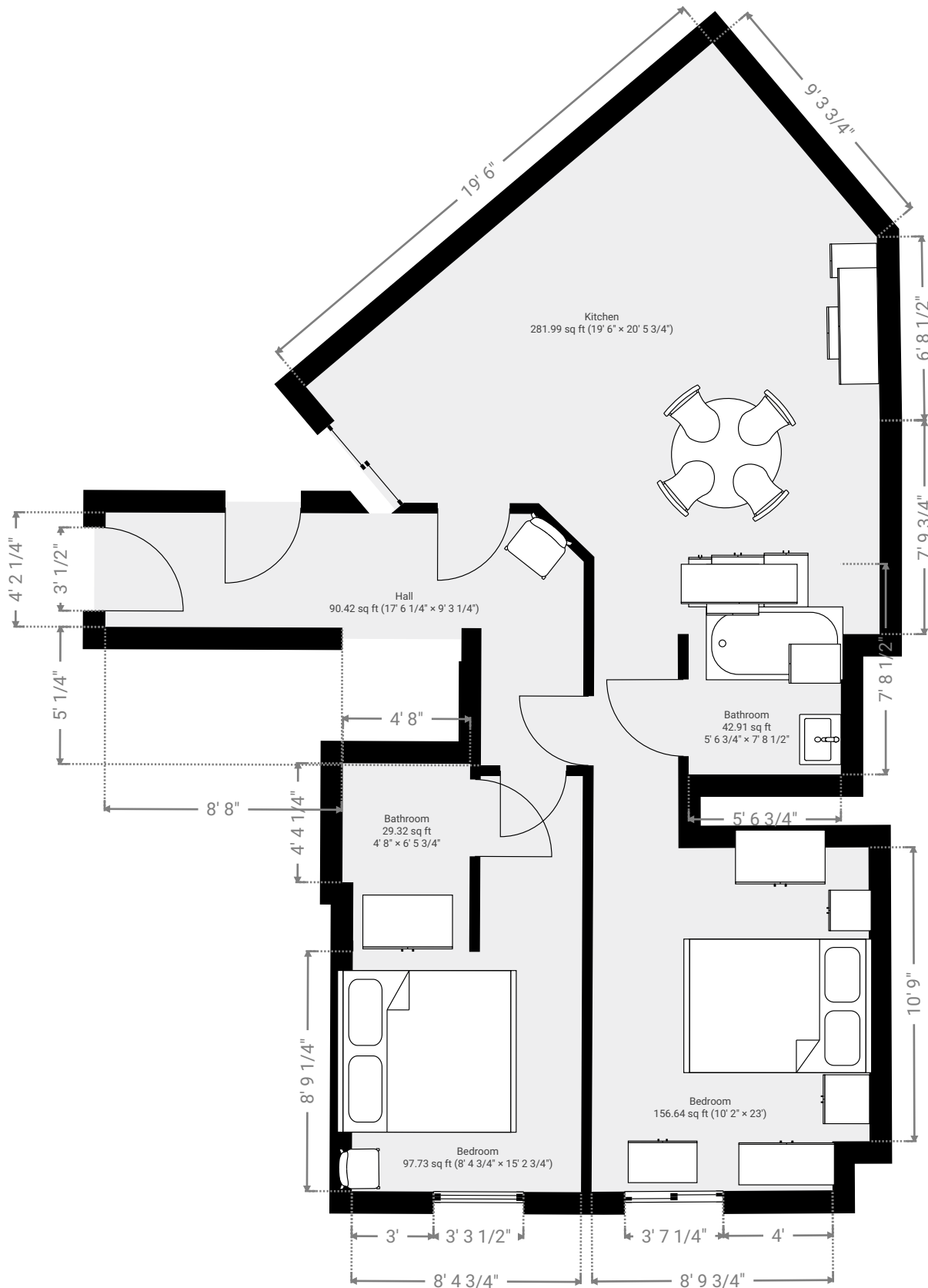
Brewery Square (Copy)

4 The Cooperage, DT1 1HE Dorchester, Dorset, GB
 TOTAL AREA: 676.63 sq ft • LIVING AREA: 676.63 sq ft • FLOORS: 1 • ROOMS: 6

SUBMITTED BY Mike Jerome
 mike@dorchesterpropertylettings.co.uk • 07768500303

▼ 1st Floor

TOTAL AREA: 676.63 sq ft • LIVING AREA: 676.63 sq ft • ROOMS: 6



THIS FLOORPLAN IS PROVIDED WITHOUT WARRANTY OF ANY KIND. SENSOPIA DISCLAIMS ANY WARRANTY INCLUDING, WITHOUT LIMITATION, SATISFACTORY QUALITY OR ACCURACY OF DIMENSIONS.

0' 2' 4' 6' 8' 10' 1:65