

# David Doyle

 **MAYFAIR**  
OFFICE.CO.UK

## 12 White Lion Street

Apsley, HP3.

- Finished to a high standard and spacious 1 bedroom ground floor maisonette.
- Large open plan living room / kitchen diner and allocated parking.
- Conveniently located for local shops, amenities and Apsley station with links to London Euston.
- High gloss handleless fitted kitchen.
- Newly fitted bathroom fitted in white with chrome fittings.
- Large double bedroom.
- Allocated parking.
- Double glazing.
- NEW 999 year lease.



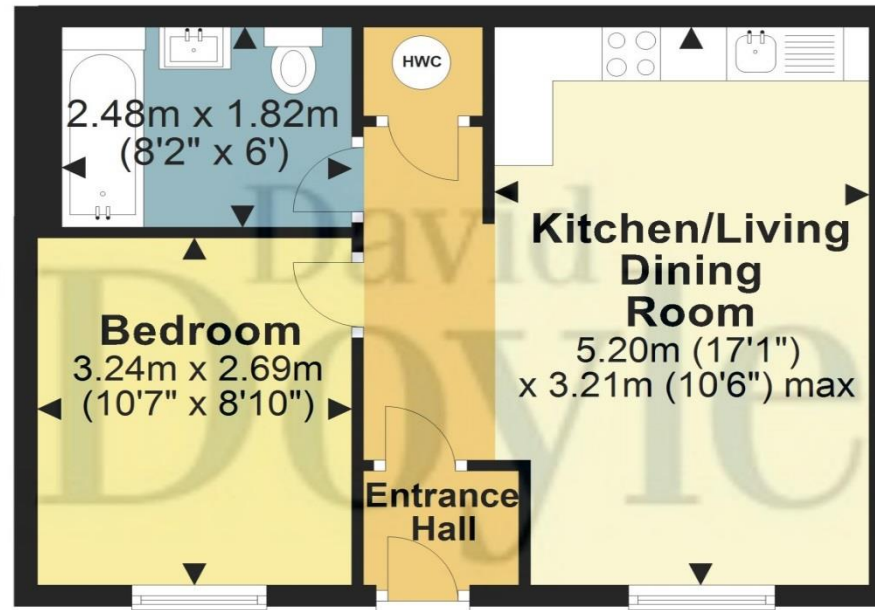
Offers in Excess of

# £185,000

Call **01442 248671** to arrange a viewing or register an interest

## Ground Floor

Approx. 36.5 sq. metres (392.6 sq. feet)



Total area: approx. 36.5 sq. metres (392.6 sq. feet)

Floorplan is not to scale and to be used for layout guidance only, any measurements shown should NOT be relied upon. Floor Area (Sq/m) includes all areas shown on plan except Balconies, Patios, Eaves, Garden and Parking Areas unless otherwise indicated.

Plan produced using PlanUp.

**12 White Lion Street**

Apsley, HP3.



45 St Johns Road  
Boxmoor  
Hemel Hempstead  
HP1 1QQ  
01442 248671