

David Doyle

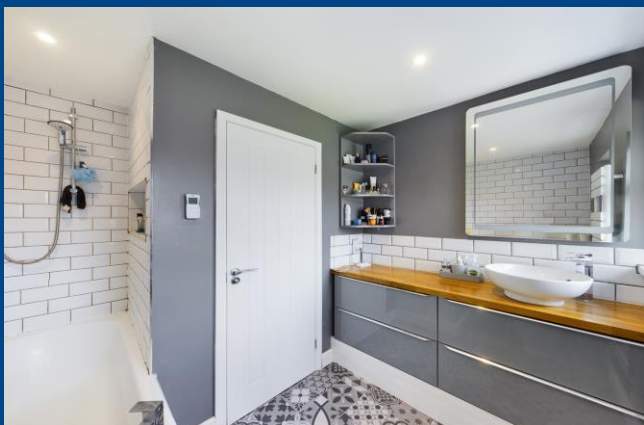
 **MAYFAIR**
OFFICE.CO.UK



**82 Marlines Turn
Hemel Hempstead
Hertfordshire
HP1 3LW**

01442 248671 www.daviddoyle.co.uk boxmoor@daviddoyle.co.uk

Price £400,000 Freehold



This superbly presented 3 Bedroom End of Terrace family home offers spacious accommodation and is located in this sought after residential situation. The property is arranged with a Lounge, open plan Kitchen Dining Room and a Utility Room, while the first floor has 3 Bedrooms and a refitted Family Bathroom. The front and rear Garden have both been arranged with low maintenance in mind. The rear Garden is landscaped with a generous patio seating area that links to the gated side access, an area laid with artificial lawn and fenced boundaries. In the rear Garden is a Summer House with power and lighting, that the current vendor uses this as a Gym along with a storage shed to the side. The property also offers scope to extend STNC. Being situated on this Green and conveniently located for local shops, schools and amenities internal viewing is highly recommended.

Hemel Hempstead with its Malls of Riverside and The Marlowes offers a full range of shopping facilities and other amenities. For

the commuter the M1 and M25 are close at hand, whilst the mainline railway station offers a fast and frequent service to London Euston.

Superbly presented 3 Bed end of terrace

Sought after location

Overlooking a Green

Lounge, Open plan Kitchen Dining Room, Utility Room

First floor refitted Family Bathroom

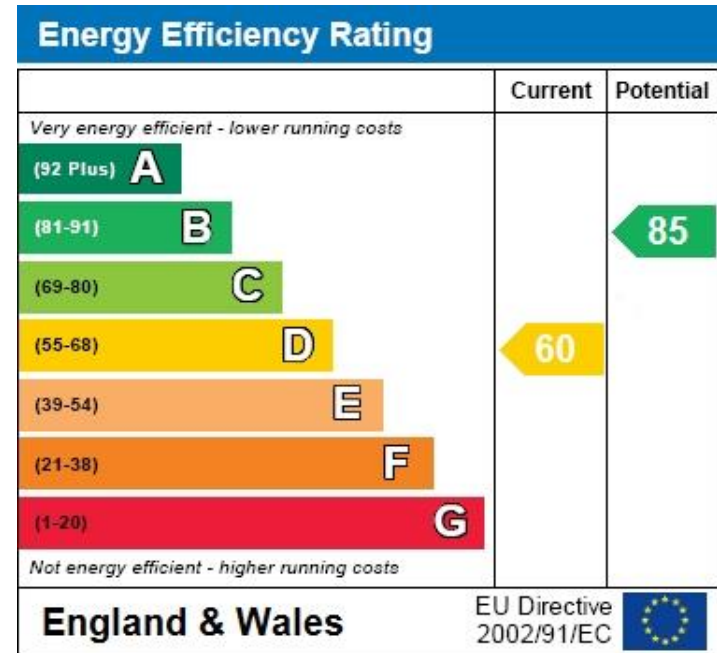
Summer House / Gym

Front and Rear Gardens

Double glazing

Gas heating to Radiators

Scope to extend STNC



David
Doyle

David Doyle Estate Agents (DD), for themselves and for the vendors of this property whose agents they are, give notice that: (1) These particulars and floorplans are set out as a general outline only for the guidance of the intending purchasers and do not constitute the whole, nor any part, of an offer or contract. (2) All descriptions, dimensions, floorplan dimensions, references to condition, necessary permissions for use and occupation, and any other details, are given in good faith and are believed to be correct at the date of compilation, but any intending purchasers should not rely on them as statements or representation of fact and must satisfy themselves as to their accuracy. (3) All plant, machinery, equipment, services, fixtures and fittings referred to were present at the date of first inspection, but have not been tested and we give no warranty or representation as to their condition, operation, or fitness for the intended purpose. (4) Any comment on council tax/rateable value, rates payable, and permitted planning use, is given in good faith from information informally supplied to us. Intending purchasers must seek confirmation direct from the relevant Local Authority. (5) No person employed by (DD) has any authority to enter into any contract, nor make or give any warranty or representation whatsoever in relation to this property. (6) (DD) do not hold themselves responsible, in negligence or otherwise, for any loss arising from the use of these particulars, nor for any expense incurred in viewing the premises or for abortive journeys. (7) All prices are exclusive of VAT (unless otherwise stated). Terms quoted are subject to contract. NB. PLEASE NOTE that some developments are subject to management company conditions and charges. Solicitors are to advise of any liability/ies.



MAYFAIR
OFFICE.CO.UK

Call **01442 248671** to arrange a viewing or register an interest



82 Marlines Turn
Hemel Hempstead
Hertfordshire
HP1 3LW



Boxmoor Office
45 St Johns Road
Boxmoor
Hemel Hempstead
Herts, HP1 1QQ
01442 248671