

David Doyle

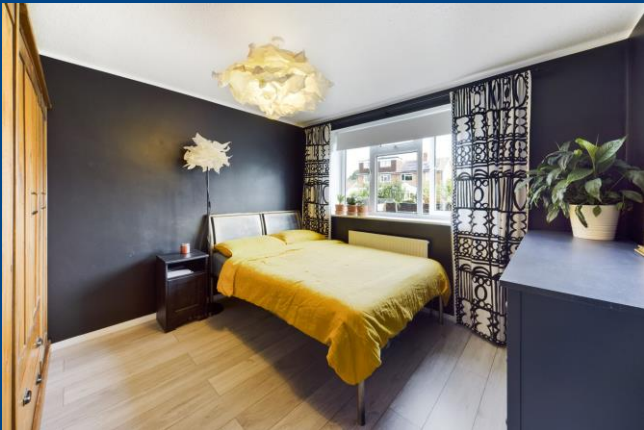
 **MAYFAIR**
OFFICE.CO.UK



**46 Stonelea Road
Hemel Hempstead
HP3 9JZ**

01442 248671 www.daviddoyle.co.uk boxmoor@daviddoyle.co.uk

Guide Price £365,000 Freehold

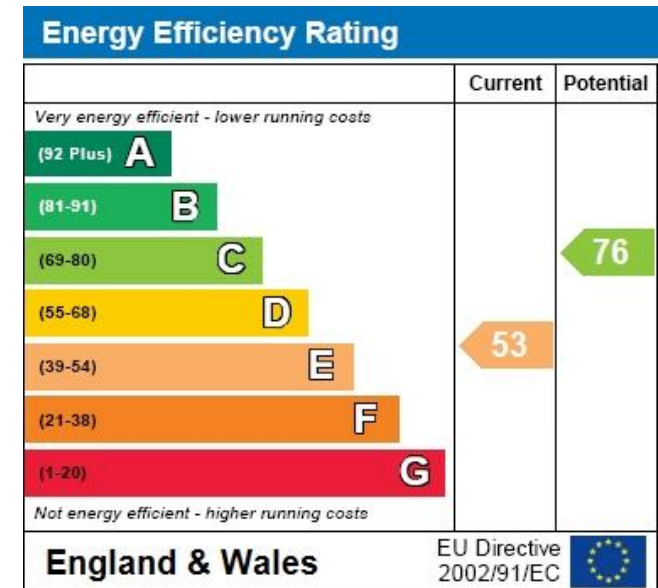


This superbly presented 3 Bedroom family home is conveniently located for local shops, schools, amenities and Apsley main line station with links to London Euston. The property is beautifully presented throughout and the ground floor is arranged with a good sized Lounge, Kitchen/Dining Room and a welcoming Entrance Hall with stairs Leading to the first floor. The first floor boasts 3 Bedrooms and a Family Bathroom. Externally the property has both front and rear Gardens, the rear Garden is pleasantly private and landscaped with a generous patio seating area, herbaceous borders, brick built storage shed otherwise laid to lawn. The property also benefits from double glazing and gas heating to radiators. VIEWING IS HIGHLY RECOMMENDED.

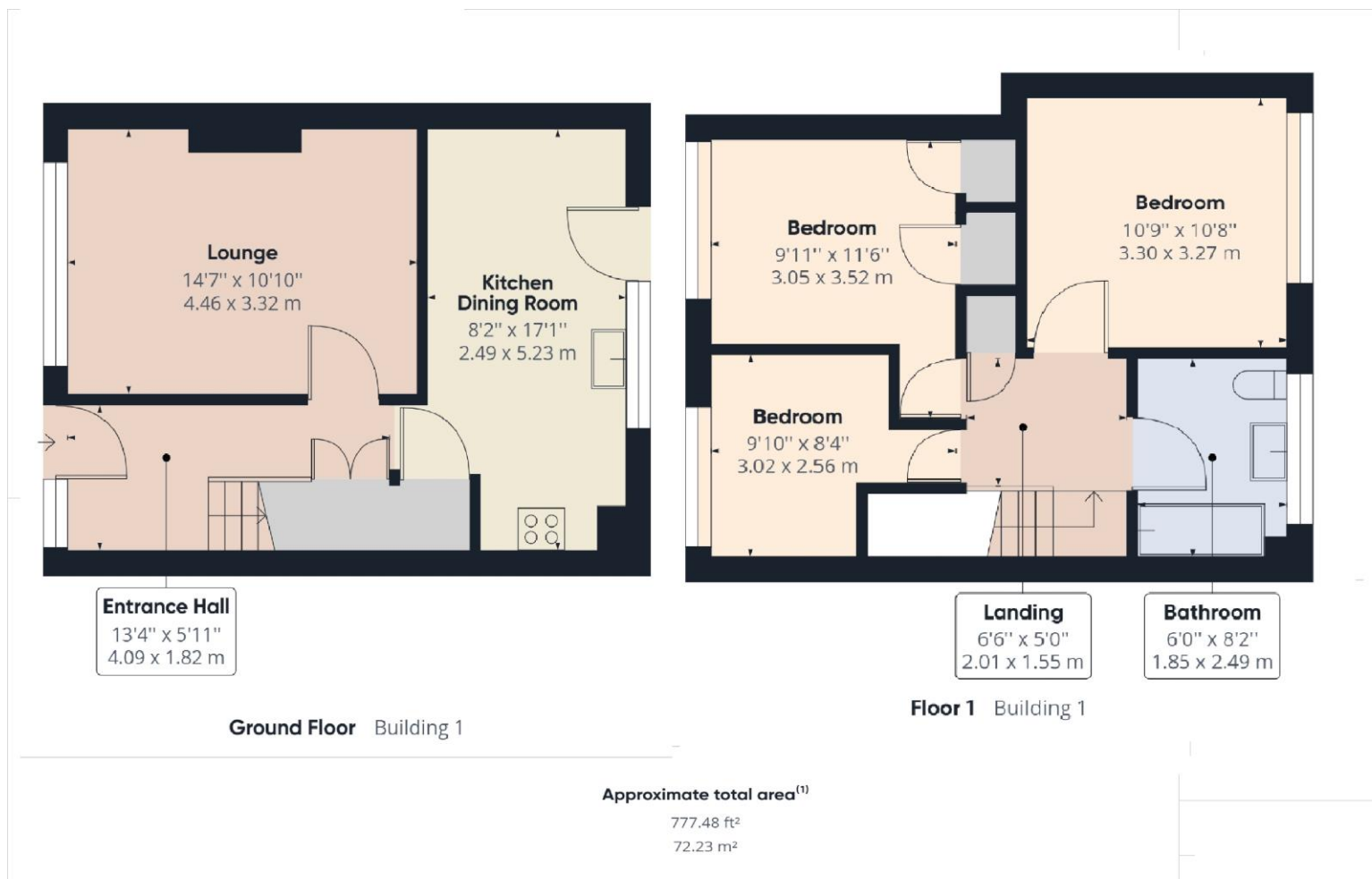
Hemel Hempstead with its Malls of Riverside and The Marlowes offers a full range of shopping facilities and other amenities. For the commuter the M1 and M25 are close at hand, whilst the mainline

railway station offers a fast and frequent service to London Euston.

- Superbly presented throughout 3 Bedroom home
- Convenient for local amenities and mainline station
- Good sized Lounge
- Kitchen/Dining Room
- Family Bathroom
- Front and rear gardens
- Private, landscaped rear garden with patio area
- VIEWING HIGHLY RECOMMENDED



Call **01442 248671** to arrange a viewing or register an interest



**46 Stonelea Road
Hemel Hempstead
HP3 9JZ**



Boxmoor Office
45 St Johns Road
Boxmoor
Hemel Hempstead
Herts, HP1 1QQ
01442 248671