

# David Doyle

 **MAYFAIR**  
OFFICE.CO.UK

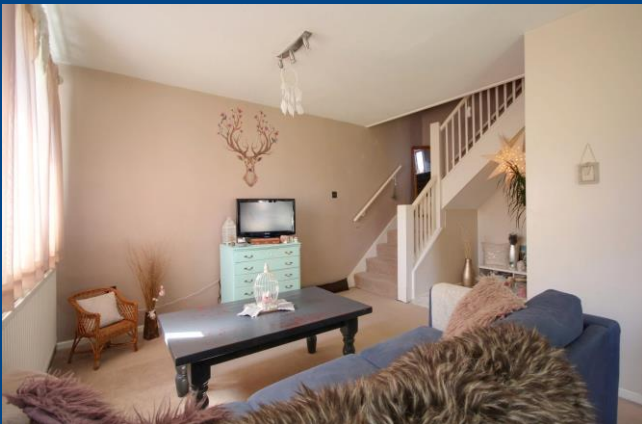
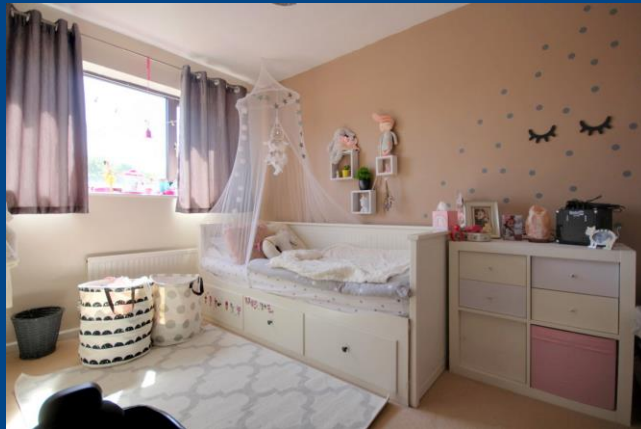


**5 Sherwood Place,  
Hemel Hempstead,  
Hertfordshire, HP2 6PS**

01442 248671 [www.daviddoyle.co.uk](http://www.daviddoyle.co.uk) [boxmoor@daviddoyle.co.uk](mailto:boxmoor@daviddoyle.co.uk)

**Price £1,300 pcm** To Let





# 5 Sherwood Place, Hemel Hempstead, Hertfordshire, HP2 6PS

Panelled double glazed front door to :-

## ENTRANCE HALL

Double glazed picture window to front aspect. Cloaks area. Semi open plan to :-

## LOUNGE/DINING ROOM

Dual aspect room with double glazed window to front aspect and double glazed patio doors to side aspect opening out to the corner plot gardens. Two radiators. Return staircase to first floor.

## KITCHEN

Refitted with a single bowl single drainer stainless steel sink unit and a range of matching wall and floor mounted units comprising both cupboards and drawers. Colour co-ordinated roll top work surfaces and part tiled walls. Space for an oven with a stainless steel extractor hood over. Space and plumbing for an automatic washing machine. Radiator. Wall mounted gas boiler. Double glazed window.

## FIRST FLOOR

## LANDING

Doors to all upstairs rooms.

## BEDROOM ONE

Double glazed window to front aspect. Radiator. Range of matching built in wardrobes to one wall.

## BEDROOM TWO

Double glazed window to side aspect. Radiator. Range of matching built in wardrobes to one wall.

## BATHROOM

Refitted in white with chrome fittings and comprising panelled bath with mixer tap and shower attachment with fitted shower rail, pedestal wash hand basin, and low level WC. Colour co-ordinated part tiled walls with decorative feature tiling. Chrome recessed ceiling lighting. Double glazed window to side aspect.

## OUTSIDE

## ALLOCATED OFF ROAD PARKING SPACE

## GARDENS

An attractive feature of the property sweeping around the property to the side. The garden is arranged with a paved patio, decked seating area and an area laid to lawn. Fenced boundaries. Gated pathway to front door.

## H12904

Please see floorplan for measurements.

David  
Doyle

David Doyle Estate Agents (DD), for themselves and for the vendors of this property whose agents they are, give notice that: (1) These particulars and floorplans are set out as a general outline only for the guidance of the intending purchasers and do not constitute the whole, nor any part, of an offer or contract. (2) All descriptions, dimensions, floorplan dimensions, references to condition, necessary permissions for use and occupation, and any other details, are given in good faith and are believed to be correct at the date of compilation, but any intending purchasers should not rely on them as statements or representation of fact and must satisfy themselves as to their accuracy. (3) All plant, machinery, equipment, services, fixtures and fittings referred to were present at the date of first inspection, but have not been tested and we give no warranty or representation as to their condition, operation, or fitness for the intended purpose. (4) Any comment on council tax/rateable value, rates payable, and permitted planning use, is given in good faith from information informally supplied to us. Intending purchasers must seek confirmation direct from the relevant Local Authority. (5) No person employed by (DD) has any authority to enter into any contract, nor make or give any warranty or representation whatsoever in relation to this property. (6) (DD) do not hold themselves responsible, in negligence or otherwise, for any loss arising from the use of these particulars, nor for any expense incurred in viewing the premises or for abortive journeys. (7) All prices are exclusive of VAT (unless otherwise stated). Terms quoted are subject to contract. NB. PLEASE NOTE that some developments are subject to management company conditions and charges. Solicitors are to advise of any liability/ies.



MAYFAIR  
OFFICE.CO.UK

Call **01442 248671** to arrange a viewing or register an interest

5 Sherwood Place, Hemel  
Hempstead, Hertfordshire, HP2 6PS



Boxmoor Office  
45 St Johns Road  
Boxmoor  
Hemel Hempstead  
Herts, HP1 1QQ  
01442 248671