

David Doyle

 **MAYFAIR**
OFFICE.CO.UK



**32 Thumpers
Hemel Hempstead
HP2 5SJ**

01442 248671 www.daviddoyle.co.uk boxmoor@daviddoyle.co.uk

Offers in Excess of £385,000 Freehold



David Doyle are delighted to offer to the Sales Market this extended 4 Bedroom End of Terrace Family Home presented in good order throughout and close to excellent amenities including travel links and the historic 'Old Town'. The property has been updated throughout by the current owner to include quality wide wood effect laminate flooring and bespoke fitted wardrobes to Bedrooms 1 and 2. With over 1080 square feet, the accommodation comprises an entrance hall with stairs to the first floor and a door to the large living room leading to a spacious dining room with doors to both the recently refitted kitchen offering a range of wall and base units and a separate a utility room. Finishing the ground floor is an inner hallway leading to a Double bedroom and separate fully tiled shower room, perfect for a multi generational family. To the first floor are 3 bedrooms and a large 4 piece family bathroom refitted in approximately 2019. Externally, the property benefits from a pleasantly private rear garden, arranged with a covered area and mostly paved with wall and fenced boundaries. To the front of the property is a lawned area with a staggered path leading to

the front door. Offering spacious and versatile living space and with the benefits of Gas Central Heating and Double Glazing, an appointment to view is highly recommended.

Hemel Hempstead with its Malls of Riverside and The Marlowes offers a full range of shopping facilities and other amenities. For the commuter the M1 and M25 are close at hand, whilst the mainline railway station offers a fast and frequent service to London Euston.

- Downstairs Bedroom Suite
- Call To View

- 4 Bedroom Family Home
- Ground Floor Shower Room & First Floor Bedroom
- Updated Throughout
- Close to Amenities
- Refitted Kitchen and Utility Room
- Bespoke wardrobes to Bedrooms 1 & 2
- Quality laminate Flooring
- Rear Garden

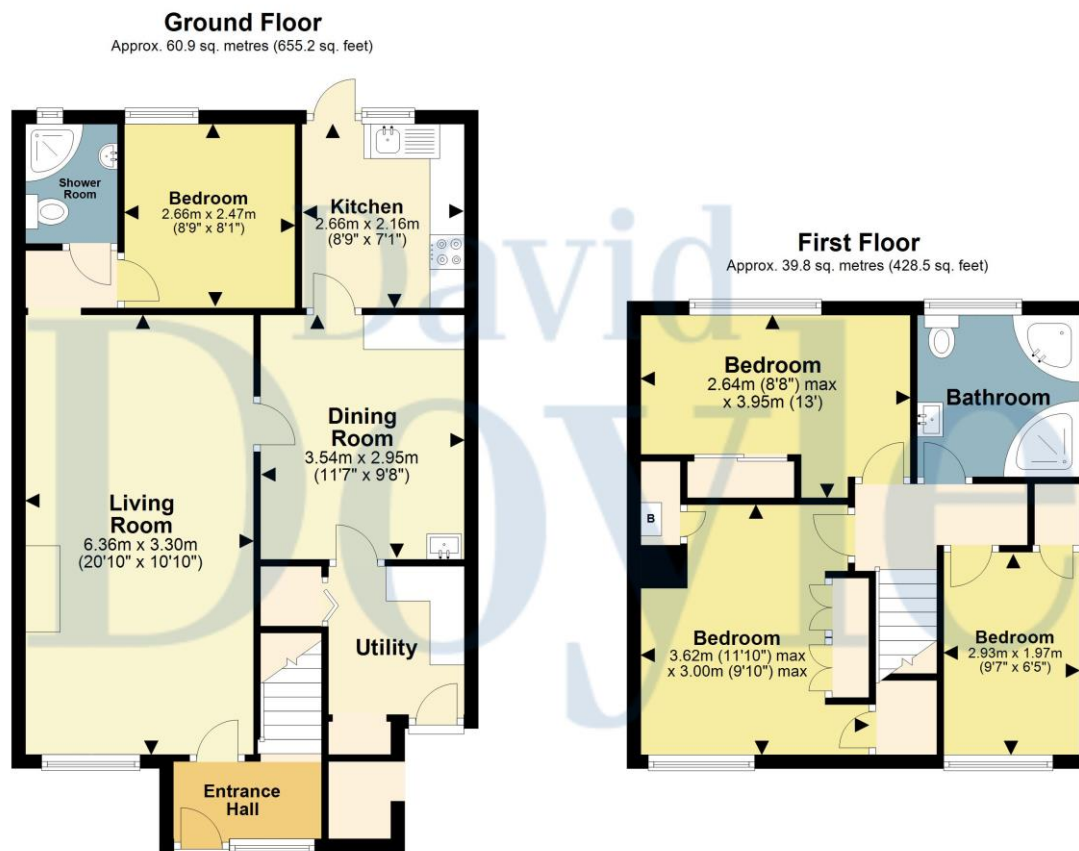
David
Doyle

David Doyle Estate Agents (DD), for themselves and for the vendors of this property whose agents they are, give notice that: (1) These particulars and floorplans are set out as a general outline only for the guidance of the intending purchasers and do not constitute the whole, nor any part, of an offer or contract. (2) All descriptions, dimensions, floorplan dimensions, references to condition, necessary permissions for use and occupation, and any other details, are given in good faith and are believed to be correct at the date of compilation, but any intending purchasers should not rely on them as statements or representation of fact and must satisfy themselves as to their accuracy. (3) All plant, machinery, equipment, services, fixtures and fittings referred to were present at the date of first inspection, but have not been tested and we give no warranty or representation as to their condition, operation, or fitness for the intended purpose. (4) Any comment on council tax/rateable value, rates payable, and permitted planning use, is given in good faith from information informally supplied to us. Intending purchasers must seek confirmation direct from the relevant Local Authority. (5) No person employed by (DD) has any authority to enter into any contract, nor make or give any warranty or representation whatsoever in relation to this property. (6) (DD) do not hold themselves responsible, in negligence or otherwise, for any loss arising from the use of these particulars, nor for any expense incurred in viewing the premises or for abortive journeys. (7) All prices are exclusive of VAT (unless otherwise stated). Terms quoted are subject to contract. NB. PLEASE NOTE that some developments are subject to management company conditions and charges. Solicitors are to advise of any liability/ies.



MAYFAIR
OFFICE.CO.UK

Call **01442 248671** to arrange a viewing or register an interest



Total area: approx. 100.7 sq. metres (1083.7 sq. feet)

Disclaimer - Floor plan is for marketing purposes only and is to be used as a guide - SKM Studio
Plan produced using PlanUp.

32 Thumpers
Hemel Hempstead
HP2 5SJ

 **MAYFAIR**
OFFICE.CO.UK

Boxmoor Office
45 St Johns Road
Boxmoor
Hemel Hempstead
Herts, HP1 1QQ
01442 248671