

# David Doyle

 **MAYFAIR**  
OFFICE.CO.UK



**84 Bury Hill  
Lockers Park  
Hemel Hempstead  
HP1 1SR**

01442 248671 [www.daviddoyle.co.uk](http://www.daviddoyle.co.uk) [boxmoor@daviddoyle.co.uk](mailto:boxmoor@daviddoyle.co.uk)

**Price £1,750 pcm** To Let





**\*\* RARELY AVAILABLE;** A well presented and spacious 2 double bedroom home in this **PRIVATE & EXCLUSIVE RESIDENTIAL LOCATION** \*\* Spacious Lounge/Dining Room, Conservatory, Fitted Kitchen, Master Bedroom with Ensuite - First Floor Bathroom & Ground Floor W/C. Additional Benefits include solar panels for heating & hot water, front & rear gardens and garage in nearby block. Offered unfurnished, available NOW.

To view this property prospective tenants are expected to earn 30 times the monthly rental figure to pass referencing. If self employed you will be required to give details of your accounts showing suitable earnings. The landlord has stipulated no smokers or pets.

**Rarely Available**

**Private & Exclusive Residential Location**

**2 Double Bedrooms**

**Spacious Lounge/Dining Room**

**Conservatory**

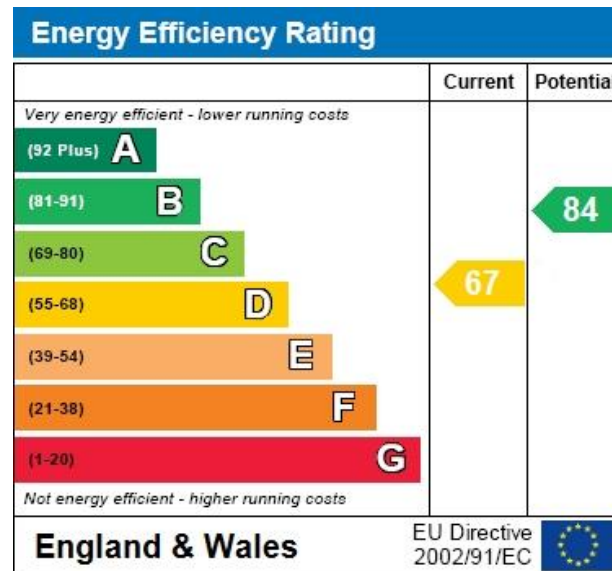
**Solar Panels**

**Garage in Nearby Block**

**South Facing Rear Garden**

**Close to Schools, Shops & Amenities**

**Unfurnished & Available Now**

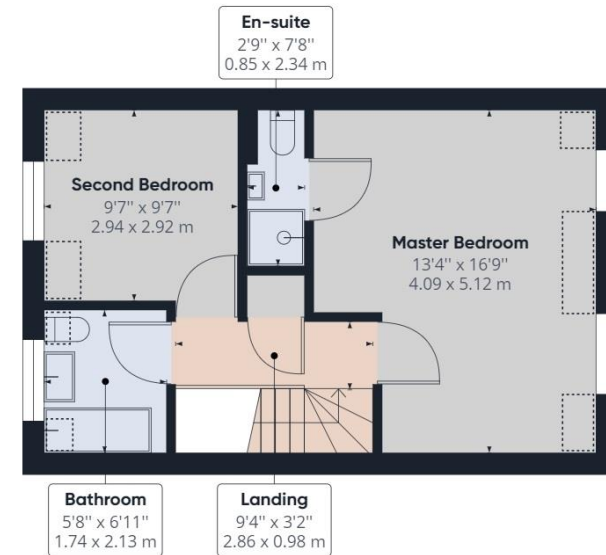
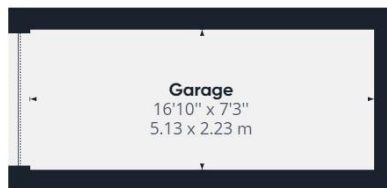
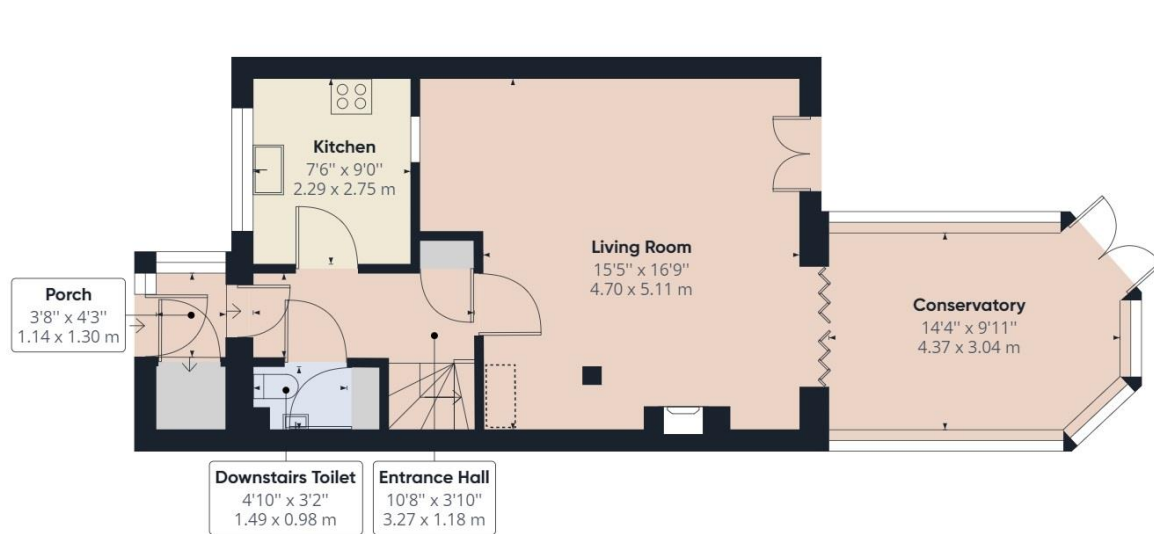


**David Doyle**

David Doyle Estate Agents (DD), for themselves and for the vendors of this property whose agents they are, give notice that: (1) These particulars and floorplans are set out as a general outline only for the guidance of the intending purchasers and do not constitute the whole, nor any part, of an offer or contract. (2) All descriptions, dimensions, floorplan dimensions, references to condition, necessary permissions for use and occupation, and any other details, are given in good faith and are believed to be correct at the date of compilation, but any intending purchasers should not rely on them as statements or representation of fact and must satisfy themselves as to their accuracy. (3) All plant, machinery, equipment, services, fixtures and fittings referred to were present at the date of first inspection, but have not been tested and we give no warranty or representation as to their condition, operation, or fitness for the intended purpose. (4) Any comment on council tax/rateable value, rates payable, and permitted planning use, is given in good faith from information informally supplied to us. Intending purchasers must seek confirmation direct from the relevant Local Authority. (5) No person employed by (DD) has any authority to enter into any contract, nor make or give any warranty or representation whatsoever in relation to this property. (6) (DD) do not hold themselves responsible, in negligence or otherwise, for any loss arising from the use of these particulars, nor for any expense incurred in viewing the premises or for abortive journeys. (7) All prices are exclusive of VAT (unless otherwise stated). Terms quoted are subject to contract. NB. PLEASE NOTE that some developments are subject to management company conditions and charges. Solicitors are to advise of any liability/ies.

 **MAYFAIR**  
OFFICE.CO.UK

Call **01442 248671** to arrange a viewing or register an interest



**Approximate total area<sup>(1)</sup>**

1148.66 ft<sup>2</sup>  
106.71 m<sup>2</sup>

**Reduced headroom**

33.45 ft<sup>2</sup>  
3.11 m<sup>2</sup>

(1) Excluding balconies and terraces

Reduced headroom  
(below 1.5m/4.92ft)

While every attempt has been made to ensure accuracy, all measurements are approximate, not to scale. This floor plan is for illustrative purposes only.

**GIRAFFE360**

**84 Bury Hill**  
**Lockers Park**  
**Hemel Hempstead**  
**HP1 1SR**

 **MAYFAIR**  
OFFICE.CO.UK

Boxmoor Office  
45 St Johns Road  
Boxmoor  
Hemel Hempstead  
Herts, HP1 1QQ  
01442 248671