

David Doyle

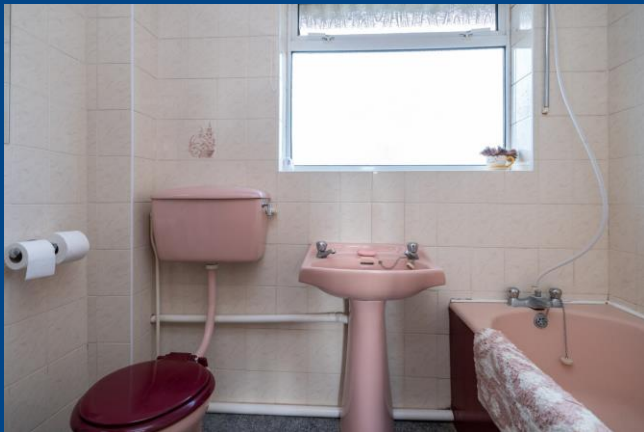
 **MAYFAIR**
OFFICE.CO.UK



**12 Bartel Close
Leverstock Green
HP3 8LX**

01442 248671 www.daviddoyle.co.uk boxmoor@daviddoyle.co.uk

Offers in Excess of £700,000



David Doyle are delighted to offer to The Sales Market this rarely available Four Bedroom Detached Family home with Garage and large Driveway situated in this highly sought after Leverstock Green Cul de Sac close to excellent amenities, highly regarded school and with excellent travel links close at hand.

Coming to the market for the first time in over 50 years, this much loved family home has been well maintained by the current owners but would benefit from some updating.

The accommodation comprises an entrance hall with stairs to the first floor and doors to a Guest Cloakroom, a bright dining room with front aspect views and a fitted kitchen and Living room, both enjoying views of the lovely rear garden. The first floor accommodation is spacious and comprises a generous landing with a window to the front of the property, access to the loft and doors to Four good sized bedrooms, and a family bathroom. Externally, the garden is sizeable

and well tended and is mostly laid to lawn with mature plants and shrubs, a shed and greenhouse, fenced boundaries and side access to the front of the property which has.

a generous frontage with beautiful gardens and an extensive Driveway leading to the Garage.. Coming to the market with No Upper Chain, we highly recommend an internal appointment to view and appreciate this excellent family home.

4 Bedroom Detached

Garage & Driveway

Sought After Leverstock Green Situation

Generous Garden

Requires Updating

First Time To Market in Many Years

2 Reception Rooms

NO Upper CHAIN

Call To View

David
Doyle

David Doyle Estate Agents (DD), for themselves and for the vendors of this property whose agents they are, give notice that: (1) These particulars and floorplans are set out as a general outline only for the guidance of the intending purchasers and do not constitute the whole, nor any part, of an offer or contract. (2) All descriptions, dimensions, floorplan dimensions, references to condition, necessary permissions for use and occupation, and any other details, are given in good faith and are believed to be correct at the date of compilation, but any intending purchasers should not rely on them as statements or representation of fact and must satisfy themselves as to their accuracy. (3) All plant, machinery, equipment, services, fixtures and fittings referred to were present at the date of first inspection, but have not been tested and we give no warranty or representation as to their condition, operation, or fitness for the intended purpose. (4) Any comment on council tax/rateable value, rates payable, and permitted planning use, is given in good faith from information informally supplied to us. Intending purchasers must seek confirmation direct from the relevant Local Authority. (5) No person employed by (DD) has any authority to enter into any contract, nor make or give any warranty or representation whatsoever in relation to this property. (6) (DD) do not hold themselves responsible, in negligence or otherwise, for any loss arising from the use of these particulars, nor for any expense incurred in viewing the premises or for abortive journeys. (7) All prices are exclusive of VAT (unless otherwise stated). Terms quoted are subject to contract. NB. PLEASE NOTE that some developments are subject to management company conditions and charges. Solicitors are to advise of any liability/ies.

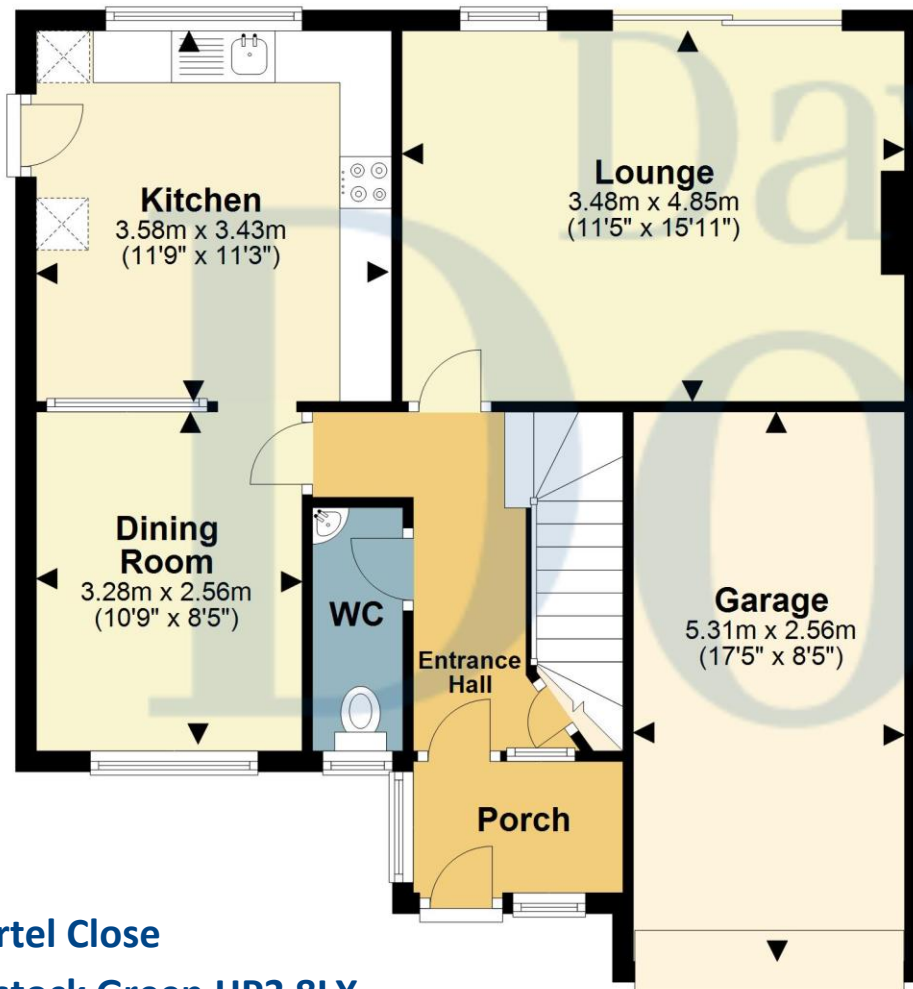


MAYFAIR
OFFICE.CO.UK

Call **01442 248671** to arrange a viewing or register an interest

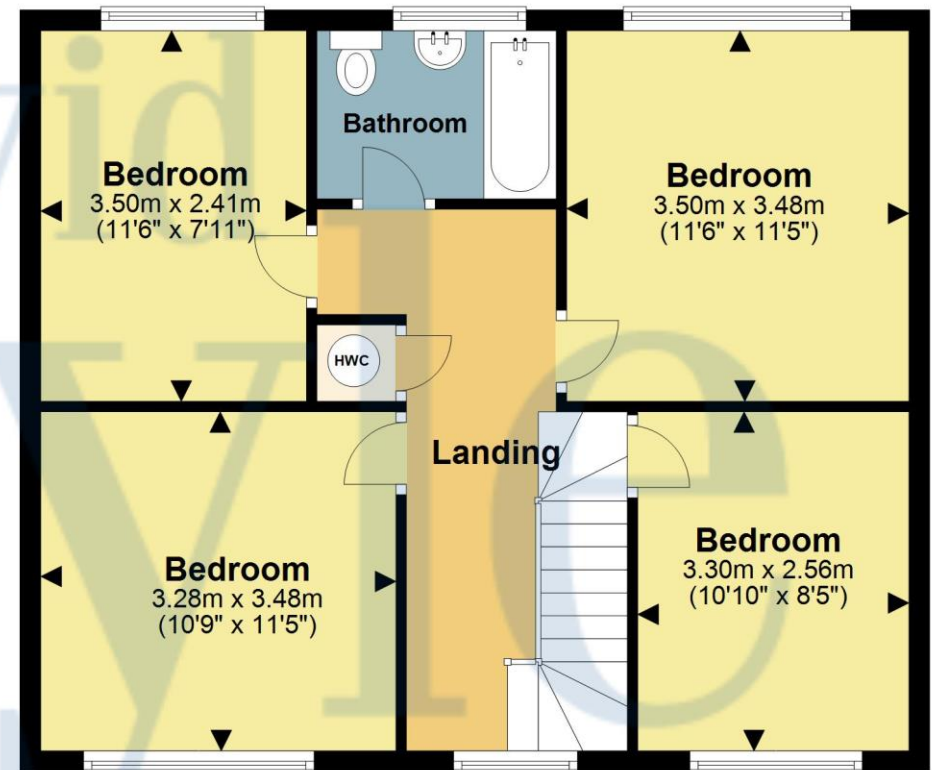
Ground Floor

Approx. 65.8 sq. metres (707.8 sq. feet)



First Floor

Approx. 58.0 sq. metres (624.2 sq. feet)



12 Bartel Close
Leverstock Green HP3 8LX

Total area: approx. 123.7 sq. metres (1332.0 sq. feet)

Boxmoor Office
45 St Johns Road
Boxmoor
Hemel Hempstead
Herts, HP1 1QQ
01442 248671