

# David Doyle

 **MAYFAIR**  
OFFICE.CO.UK

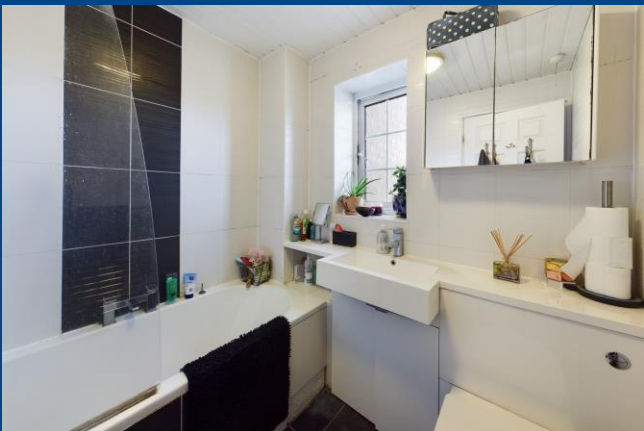


**78 Claymore  
Hemel Hempstead  
Hertfordshire  
HP2 6LW**

01442 248671 [www.daviddoyle.co.uk](http://www.daviddoyle.co.uk) [boxmoor@daviddoyle.co.uk](mailto:boxmoor@daviddoyle.co.uk)

**Guide Price £380,000** Freehold





This 4 Bedroom family home offer spacious, well presented and flexible accommodation while being conveniently located for local shops, schools and amenities. The property comprises a Lounge, Kitchen Dining room, Family Room / Bedroom 4, 3 further Bedrooms, Guest Cloak Room and a Family Bathroom. Externally the property has a generous brick block Driveway that offer off road parking facilities while the Rear Garden is arrange with low maintenance in mind and offers an excellent outside entertaining area. With double glazing, gas heating to radiators and NO UPPER CHAIN viewing is highly recommended.

Hemel Hempstead with its Malls of Riverside and The Marlowes offers a full range of shopping facilities and other amenities. For the commuter the M1 and M25 are close at hand, whilst the mainline railway station offers a fast and

frequent service to London Euston.

**Well presented 4 Bedroom family home**

**Flexible accommodation**

**Lounge. Family Room / Bedroom 4**

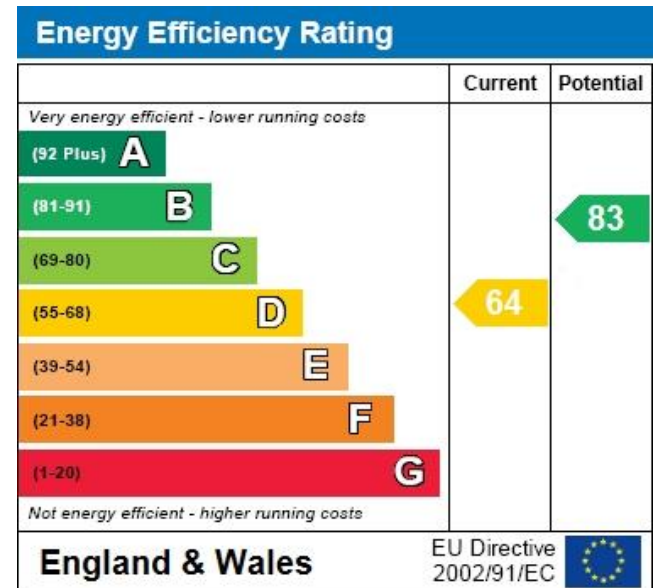
**First floor Bathroom. Guest Cloak Room**

**Kitchen Dining Room**

**Rear Garden**

**Generous Driveway**

**NO UPPER CHAIN**



**David  
Doyle**

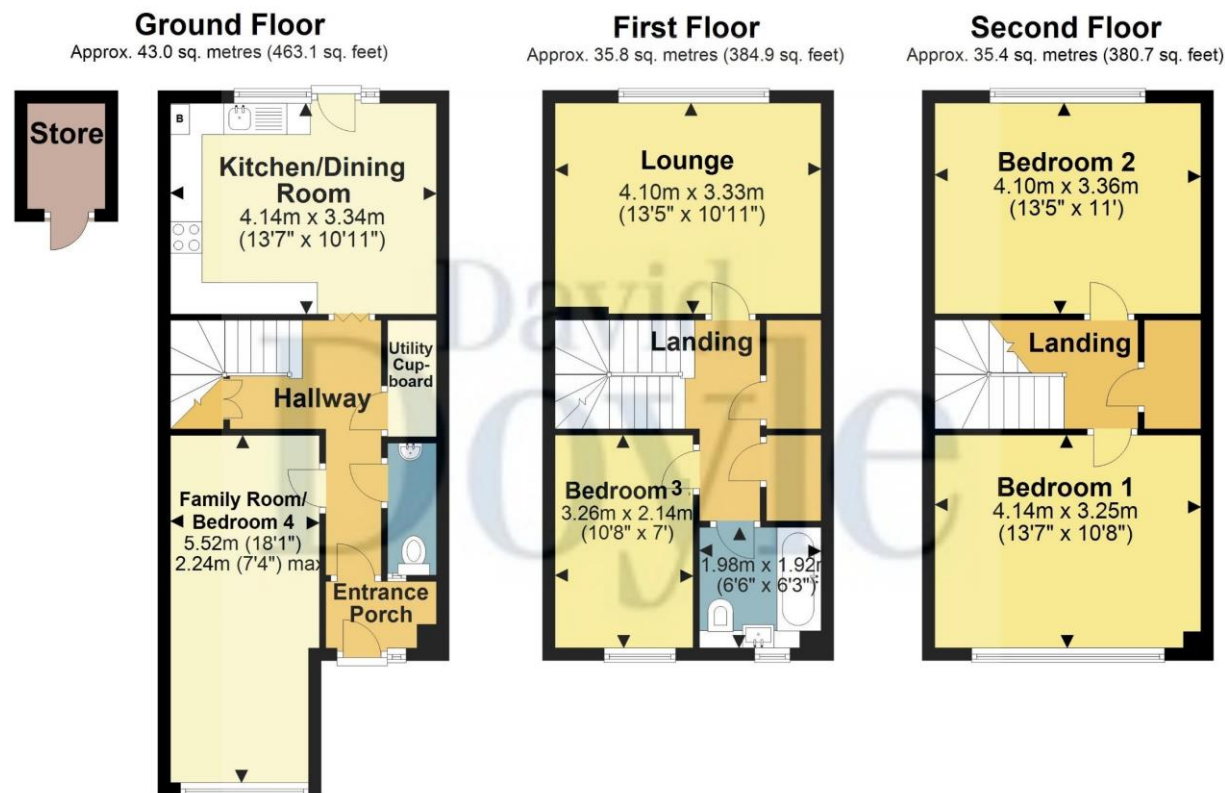
David Doyle Estate Agents (DD), for themselves and for the vendors of this property whose agents they are, give notice that: (1) These particulars and floorplans are set out as a general outline only for the guidance of the intending purchasers and do not constitute the whole, nor any part, of an offer or contract. (2) All descriptions, dimensions, floorplan dimensions, references to condition, necessary permissions for use and occupation, and any other details, are given in good faith and are believed to be correct at the date of compilation, but any intending purchasers should not rely on them as statements or representation of fact and must satisfy themselves as to their accuracy. (3) All plant, machinery, equipment, services, fixtures and fittings referred to were present at the date of first inspection, but have not been tested and we give no warranty or representation as to their condition, operation, or fitness for the intended purpose. (4) Any comment on council tax/rateable value, rates payable, and permitted planning use, is given in good faith from information informally supplied to us. Intending purchasers must seek confirmation direct from the relevant Local Authority. (5) No person employed by (DD) has any authority to enter into any contract, nor make or give any warranty or representation whatsoever in relation to this property. (6) (DD) do not hold themselves responsible, in negligence or otherwise, for any loss arising from the use of these particulars, nor for any expense incurred in viewing the premises or for abortive journeys. (7) All prices are exclusive of VAT (unless otherwise stated). Terms quoted are subject to contract. NB. PLEASE NOTE that some developments are subject to management company conditions and charges. Solicitors are to advise of any liability/ies.



**MAYFAIR**  
OFFICE.CO.UK



Call **01442 248671** to arrange a viewing or register an interest



Total area: approx. 114.1 sq. metres (1228.6 sq. feet)

This floor plan is a guide to layout and is for identification purposes only. It is not to scale and any measurements shown should not be relied upon.  
SQUARE FOOTAGE/METERAGE when shown INCLUDES ALL AREAS ON PLAN EXCEPT BALCONY/EAVES, unless otherwise indicated.  
Plan produced using PlanUp.

**78 Claymore**  
**Hemel Hempstead**  
**Hertfordshire**  
**HP2 6LW**



Boxmoor Office  
45 St Johns Road  
Boxmoor  
Hemel Hempstead  
Herts, HP1 1QQ  
01442 248671