

David Doyle

 **MAYFAIR**
OFFICE.CO.UK



**382 Galley Hill
Hemel Hempstead
Hertfordshire
HP1 3LA**

01442 248671 www.daviddoyle.co.uk boxmoor@daviddoyle.co.uk

Price £395,000 Freehold



This 2 Double Bedroom family home enjoys outstanding views over the open field to the front and offers well arranged extended accommodation. The property is in this sought after situation and conveniently located for local shops, schools and amenities. The ground floor offers a generous Lounge Dining Room, a spacious Kitchen Breakfast Room and a useful Conservatory that the current owners use as a Sitting Room. The first floor boasts 2 double Bedroom with built in wardrobes and Bedroom 1 has outstanding views over the open playing field to the front of the property. The first floor is completed by the Family Bathroom that is fitted in white with chrome fittings. Externally the property has both Front and Rear Gardens. The Rear Garden is arranged with low maintenance in mind with a patio seating area, fenced boundaries gated rear access and a garden shed. The property has recently been fitted with a New energy efficient gas boiler that came with a 10 year warranty, while also benefiting from double glazing viewing is highly recommended.

Hemel Hempstead with its Malls of Riverside and The Marlowes offers a full range of shopping facilities and other amenities. For the commuter the M1 and M25 are close at hand, whilst the mainline railway station offers a fast and frequent service to London Euston.

Sought after location

Outstanding views

Generous ground floor accommodation

Open plan Lounge Dining Room

Kitchen Breakfast Room

Conservatory

First floor family Bathroom

2 Double Bedrooms

Garden

New recently replaced energy efficient gas boiler

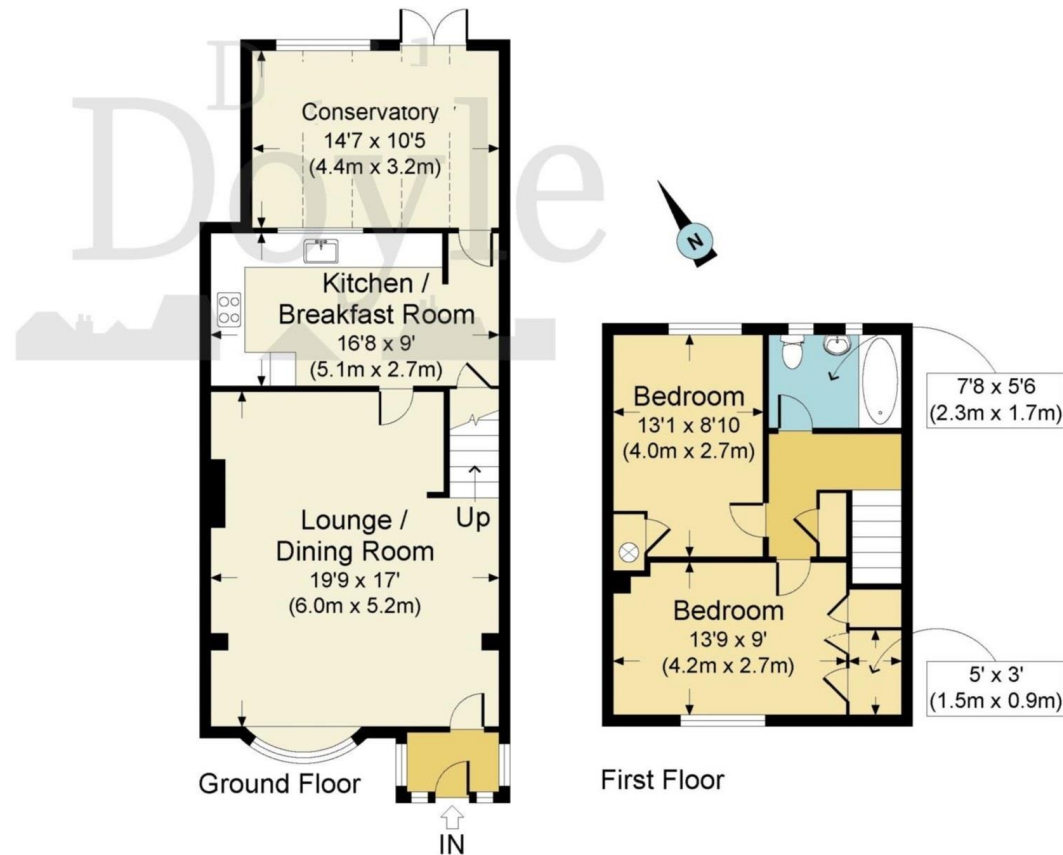
**David
Doyle**

David Doyle Estate Agents (DD), for themselves and for the vendors of this property whose agents they are, give notice that: (1) These particulars and floorplans are set out as a general outline only for the guidance of the intending purchasers and do not constitute the whole, nor any part, of an offer or contract. (2) All descriptions, dimensions, floorplan dimensions, references to condition, necessary permissions for use and occupation, and any other details, are given in good faith and are believed to be correct at the date of compilation, but any intending purchasers should not rely on them as statements or representation of fact and must satisfy themselves as to their accuracy. (3) All plant, machinery, equipment, services, fixtures and fittings referred to were present at the date of first inspection, but have not been tested and we give no warranty or representation as to their condition, operation, or fitness for the intended purpose. (4) Any comment on council tax/rateable value, rates payable, and permitted planning use, is given in good faith from information informally supplied to us. Intending purchasers must seek confirmation direct from the relevant Local Authority. (5) No person employed by (DD) has any authority to enter into any contract, nor make or give any warranty or representation whatsoever in relation to this property. (6) (DD) do not hold themselves responsible, in negligence or otherwise, for any loss arising from the use of these particulars, nor for any expense incurred in viewing the premises or for abortive journeys. (7) All prices are exclusive of VAT (unless otherwise stated). Terms quoted are subject to contract. NB. PLEASE NOTE that some developments are subject to management company conditions and charges. Solicitors are to advise of any liability/ies.



MAYFAIR
OFFICE.CO.UK

Call **01442 248671** to arrange a viewing or register an interest



GALLEY HILL, HP1 3LA
APPROX. GROSS INTERNAL FLOOR AREA 1060 SQ FT / 99 SQ M.
DAVDBOX8648-FC: THIS IMAGE IS ILLUSTRATIVE ONLY - NOT TO SCALE: COPYRIGHT: THE IMAGE TAILOR LTD.

382 Galley Hill
Hemel Hempstead
Hertfordshire
HP1 3LA



Boxmoor Office
45 St Johns Road
Boxmoor
Hemel Hempstead
Herts, HP1 1QQ
01442 248671