

David Doyle

 **MAYFAIR**
OFFICE.CO.UK



**4 Ellen Close
Hemel Hempstead
Hertfordshire
HP2 5LX**

01442 248671 www.daviddoyle.co.uk boxmoor@daviddoyle.co.uk

OIEO £450,000 Freehold



This 3 Double Bedroom link Detached family home is located in this popular cul de sac while being conveniently located for local shops, schools and amenities. The property offers well arranged accommodation with a generous Lounge Dining Room, a large Conservatory, Fitted Kitchen, Study, Guest Cloak Room, 3 first floor Bedrooms and a first floor Family Bathroom. Externally the property offers a pleasantly private Rear Garden with a patio seating area, herbaceous borders, an area laid to lawn and a garden shed. The property also benefits from a integral Garage with a personal door to the Study and a Driveway that offer off road parking to the front of the Garage. With double glazing, gas heating to radiators and NO UPPER CHAIN, viewing is a must.

Hemel Hempstead with its Malls of Riverside and The Marlowes offers a full range of shopping facilities and other

amenities. For the commuter the M1 and M25 are close at hand, whilst the mainline railway station offers a fast and frequent service to London Euston.

Cul de sac location

Close to shops, schools and local amenities

Lounge Dining Room

Large Conservatory

Study

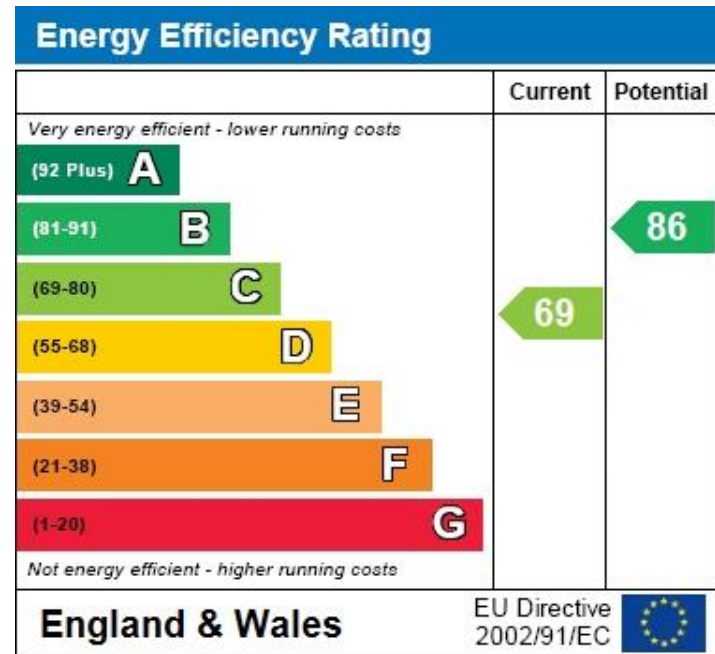
Fitted Kitchen

Guest Cloak Room

First floor Bathroom

Garage. Driveway

Rear Garden. NO UPPER CHAIN



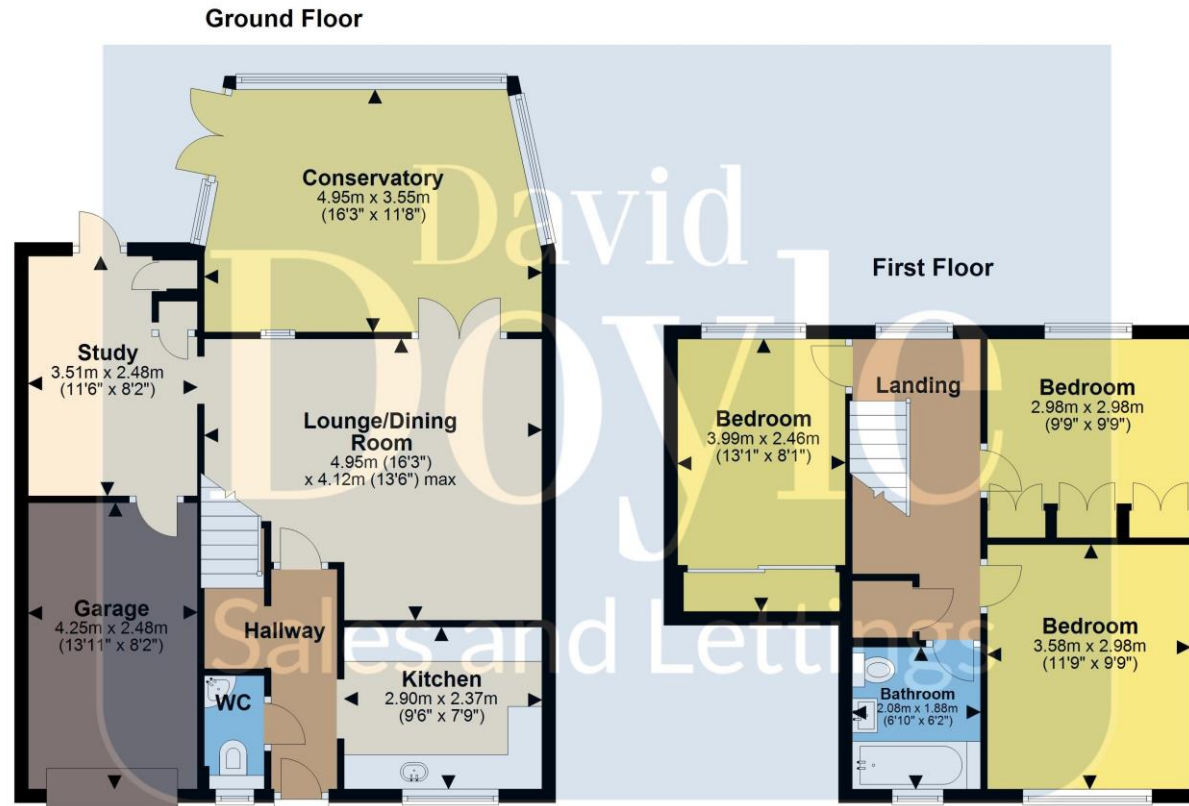
**David
Doyle**

David Doyle Estate Agents (DD), for themselves and for the vendors of this property whose agents they are, give notice that: (1) These particulars and floorplans are set out as a general outline only for the guidance of the intending purchasers and do not constitute the whole, nor any part, of an offer or contract. (2) All descriptions, dimensions, floorplan dimensions, references to condition, necessary permissions for use and occupation, and any other details, are given in good faith and are believed to be correct at the date of compilation, but any intending purchasers should not rely on them as statements or representation of fact and must satisfy themselves as to their accuracy. (3) All plant, machinery, equipment, services, fixtures and fittings referred to were present at the date of first inspection, but have not been tested and we give no warranty or representation as to their condition, operation, or fitness for the intended purpose. (4) Any comment on council tax/rateable value, rates payable, and permitted planning use, is given in good faith from information informally supplied to us. Intending purchasers must seek confirmation direct from the relevant Local Authority. (5) No person employed by (DD) has any authority to enter into any contract, nor make or give any warranty or representation whatsoever in relation to this property. (6) (DD) do not hold themselves responsible, in negligence or otherwise, for any loss arising from the use of these particulars, nor for any expense incurred in viewing the premises or for abortive journeys. (7) All prices are exclusive of VAT (unless otherwise stated). Terms quoted are subject to contract. NB. PLEASE NOTE that some developments are subject to management company conditions and charges. Solicitors are to advise of any liability/ies.



MAYFAIR
OFFICE.CO.UK

Call **01442 248671** to arrange a viewing or register an interest



Total area: approx. 112.7 sq. metres (1213.3 sq. feet)

This floor plan is not to scale and is to be used for layout guidance only, whilst every care is taken in the preparation of this plan any measurements should NOT be relied upon, please check all dimensions and shapes before making any decisions reliant upon them. Windows and door openings are approximate.
Plan produced using PlanUp.

4 Ellen Close
Hemel Hempstead
Hertfordshire
HP2 5LX



Boxmoor Office
45 St Johns Road
Boxmoor
Hemel Hempstead
Herts, HP1 1QQ
01442 248671