

# David Doyle

 **MAYFAIR**  
OFFICE.CO.UK



**69 London Road**  
**Apsley**  
**Hemel Hempstead**  
**HP3 9SP**

**Price £415,000** Freehold

01442 248671 [www.daviddoyle.co.uk](http://www.daviddoyle.co.uk) [boxmoor@daviddoyle.co.uk](mailto:boxmoor@daviddoyle.co.uk)



This beautifully presented 2 Double Bedroom 2 Bathroom character cottage with delightful 'tucked away' situation offers well arranged accommodation while being conveniently located to local shops and Apsley main line station with links to London Euston. The ground floor is arranged with a spacious Lounge while bi fold doors lead you through to Dining area and a refitted Kitchen. The ground floor is completed by a Bathroom with a vaulted ceiling and a welcoming Porch. The first floor boasts 2 Double Bedrooms and a Shower Room. The Master Bedroom offer built in storage and an impressive vaulted ceiling. Externally this property benefits from a good size Front Garden that is laid to lawn and has a patio seating area, a Decked Rear Garden, a Hard standing to the bottom of the Front Garden and a useful storage cupboard in the Rear Garden. With NO UPPER CHAIN viewing is a MUST.

'Apsley village' is a favoured residential area with a delightful village feel and excellent local schooling and a good selection of shops and other amenities. For the commuter the village benefits from its own mainline railway station to London Euston, whilst it also enjoys the picturesque benefits of the Grand Union Canal and Apsley Marina.

**Spacious and beautifully presented 2 Double Bedroom Cottage**

'Tucked away' position and close to Apsley station.

Lounge.Dining area

Refitted Kitchen

Downstairs Bathroom and first floor

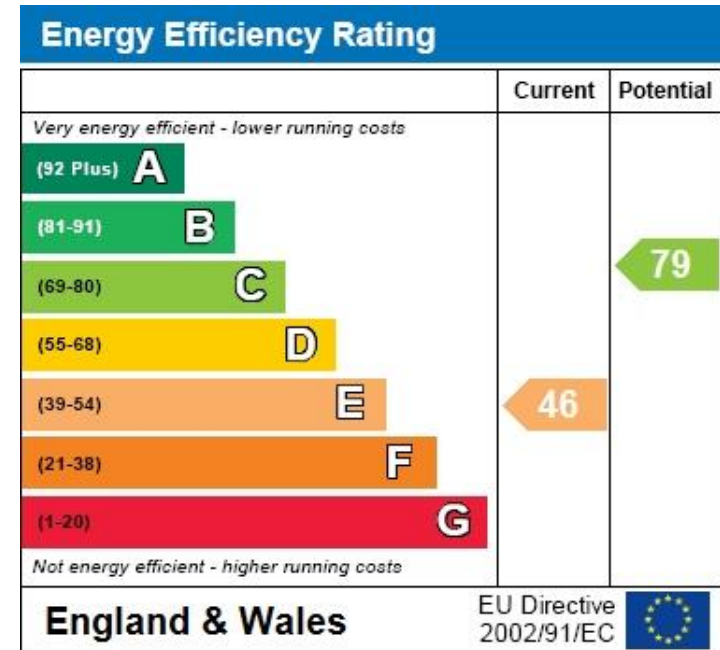
Shower Room

Decked Garden

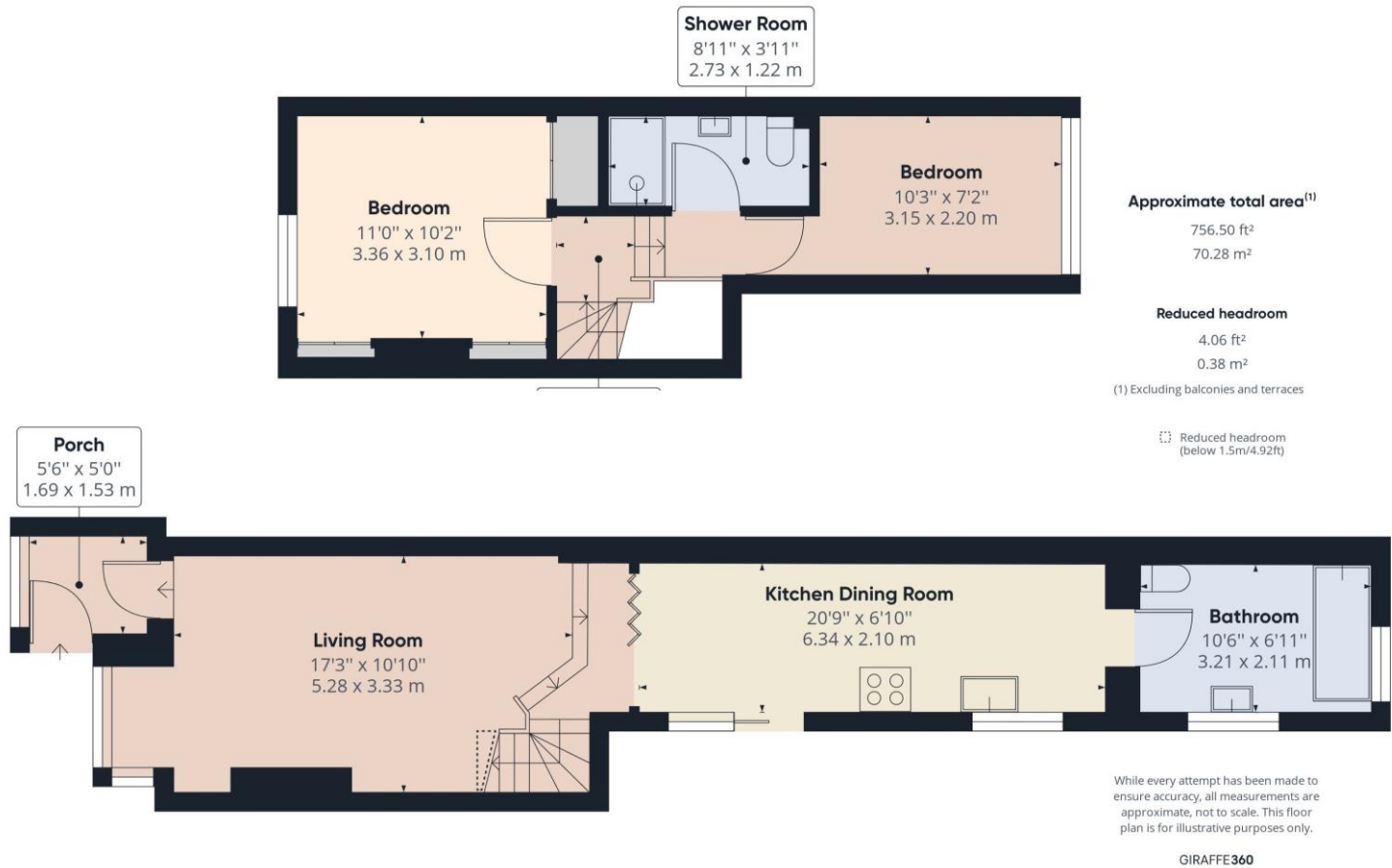
Hard standing

NO UPPER CHAIN

VIEWING IS A MUST



Call **01442 248671** to arrange a viewing or register an interest



69 London Road  
Apsley  
Hemel Hempstead  
HP3 9SP



Boxmoor Office  
45 St Johns Road  
Boxmoor  
Hemel Hempstead  
Herts, HP1 1QQ  
01442 248671