

David Doyle

 **MAYFAIR**
OFFICE.CO.UK

6 Eleanor Close

South Park Gardens

Berkhamsted, Hertfordshire

- BEAUTIFULLY PRESENTED 4-BED DETACHED EXECUTIVE HOME IN BERKHAMSTED
- HIGHLY SOUGHT-AFTER AREA
- FLEXIBLE ACCOMMODATION WITH IMPRESSIVE KITCHEN-DINING-FAMILY ROOM
- DUAL ASPECT LOUNGE, STUDY, GUEST CLOAK ROOM, UTILITY ROOM
- GENEROUS ENTRANCE HALL WITH LIGHT OAK AND GLASS STAIRS TO FIRST FLOOR
- THREE BEDROOMS WITH ENSUITES, MASTER WITH JULIET BALCONY AND VAULTED CEILING
- FIRST FLOOR LANDING WITH JULIET BALCONY OVERLOOKING LANDSCAPED PRIVATE REAR GARDEN
- DOUBLE GARAGING AND DRIVEWAY PROVIDING OFF-ROAD PARKING
- UNDERFLOOR HEATING AND RADIATORS, BRUSHED CHROME

Guide Price

£1,250,000

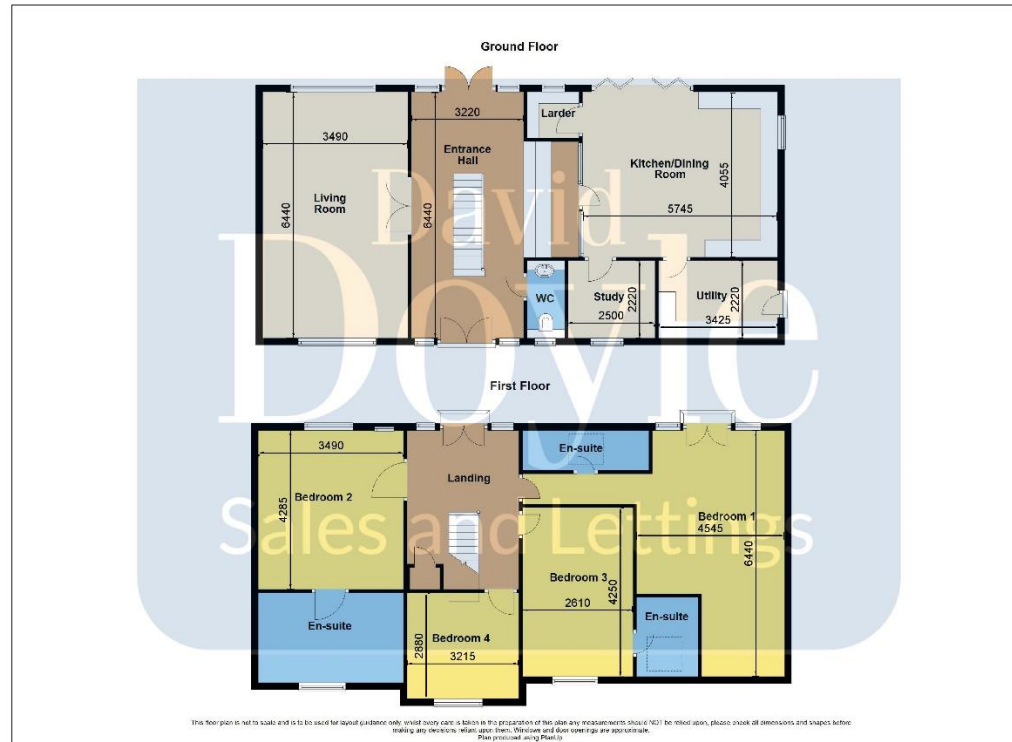


Tel: 01442 248671

www.daviddoyle.co.uk

boxmoor@daviddoyle.co.uk

Call **01442 248671** to arrange a viewing or register an interest



6 Eleanor Close
South Park Gardens
Berkhamsted, Hertfordshire



45 St Johns Road
Boxmoor
Hemel Hempstead
HP1 1QQ
01442 248671