

**12 The Exchange, 89 Marlowes,
Hemel Hempstead, Hertfordshire,
HP1 1EH**

**David
Doyle**
Sales and Lettings

Offers Over £210,000 Freehold



This 1 bedroom first floor apartment is located on this sought after modern development. The open plan living space offers a lounge, kitchen, and dining area, the kitchen has integrated appliances for your convenience. The bedroom is spacious and the bathroom has been well fitted and thoughtfully designed. Residents of this apartment complex enjoy access to a communal gym, bike store as well as a delightful roof terrace, providing a shared outdoor area. The vendors currently rent a parking space nearby, for more details please contact the office. The apartment is situated near local shops, Gadebridge Park, and other amenities. Don't miss out on the chance to see this lovely apartment. Book a viewing today!

Hemel Hempstead with its Malls of Riverside and The Marlowes offers a full range of shopping facilities and other amenities. For the commuter the M1 and M25 are close at hand, whilst the mainline railway station offers a fast and frequent service to London Euston.

1 bedroom first floor apartment in a sought after modern development

Open plan living space with lounge, kitchen, and dining area

Kitchen equipped with integrated appliances

Spacious bedroom

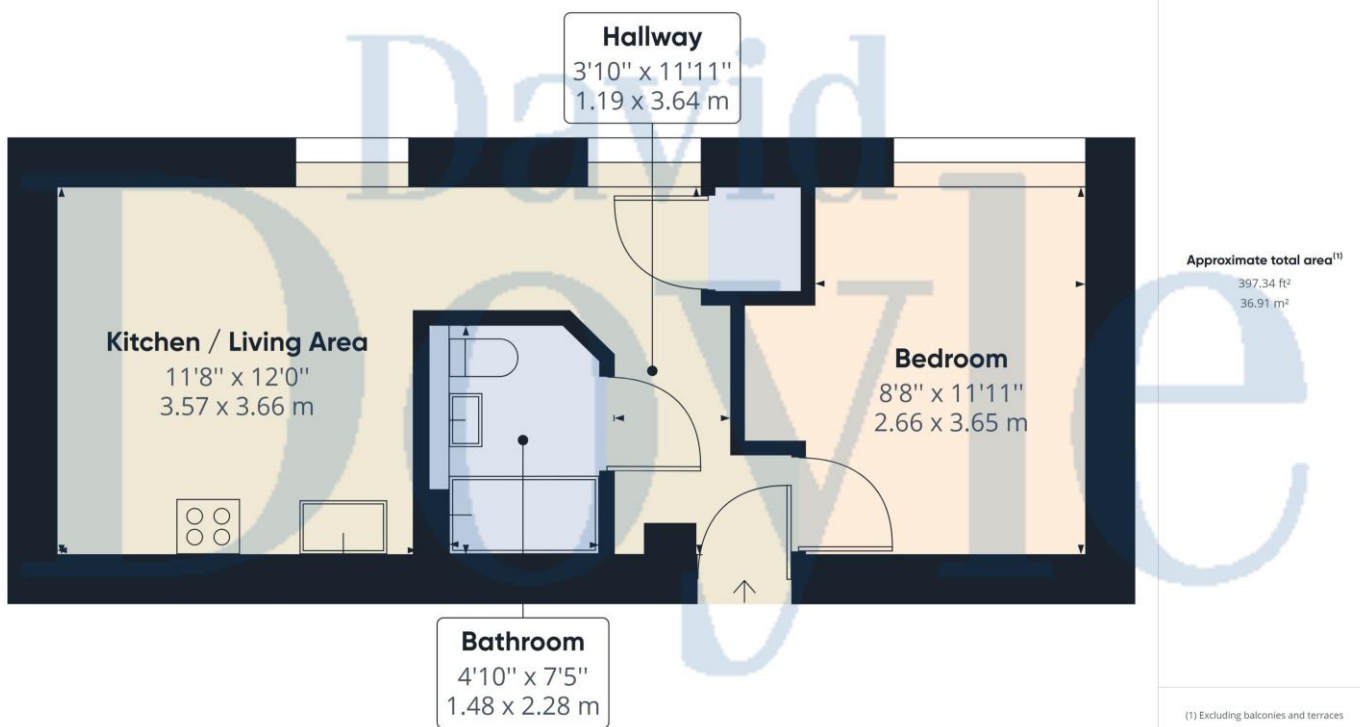
Well fitted and thoughtfully designed bathroom

Access to a communal gym,bike store and roof terrace

Viewing is a MUST

Council Tax Band C

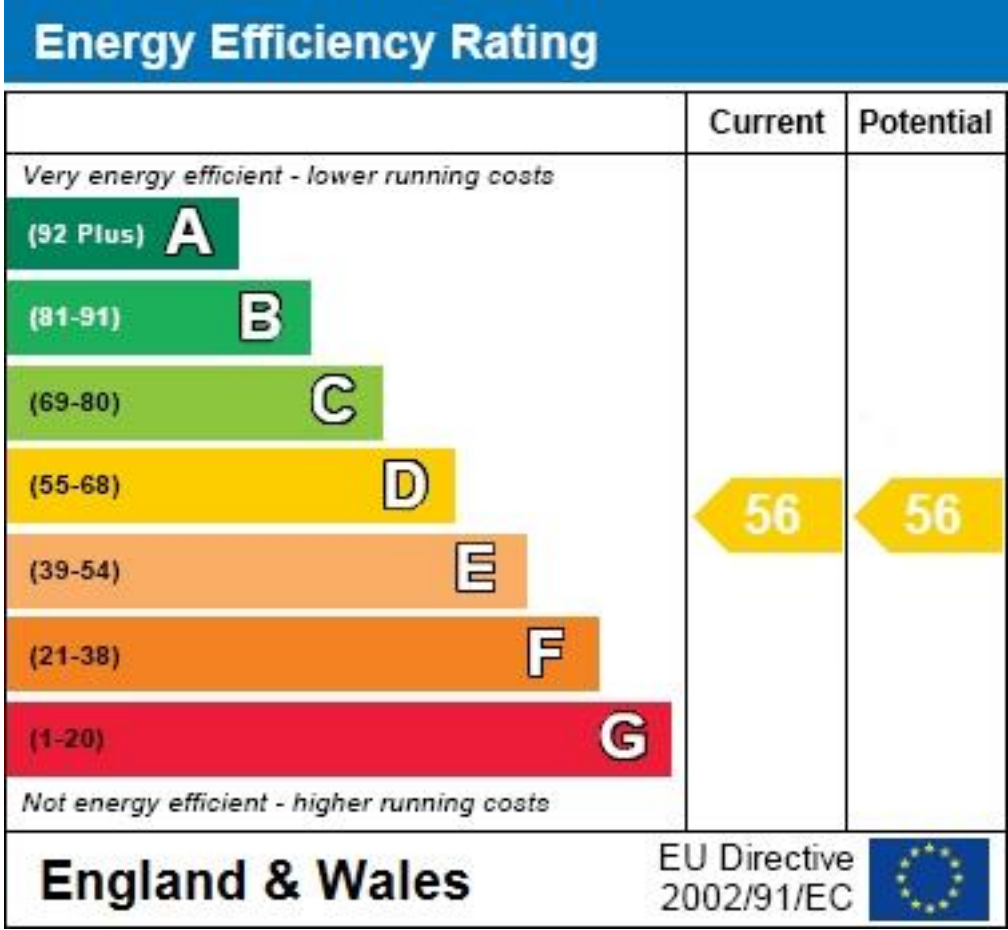
Tenure -Freehold



(1) Excluding balconies and terraces

While every attempt has been made to ensure accuracy, all measurements are approximate, not to scale. This floor plan is for illustrative purposes only.

GIRAFFE360





CALL 01442 248671 OR EMAIL BOXMOOR@DAVIDDOYLE.CO.UK TO BOOK A VIEWING

David Doyle Estate Agents (DD), for themselves and for the vendors of this property whose agents they are, give notice that: (1) These particulars and floorplans are set out as a general outline only for the guidance of the intending purchasers and do not constitute the whole, nor any part, of an offer or contract. (2) All descriptions, dimensions, floorplan dimensions, references to condition, necessary permissions for use and occupation, and any other details, are given in good faith and are believed to be correct at the date of compilation, but any intending purchasers should not rely on them as statements or representation of fact and must satisfy themselves as to their accuracy. (3) All plant, machinery, equipment, services, fixtures and fittings referred to were present at the date of first inspection, but have not been tested and we give no warranty or representation as to their condition, operation, or fitness for the intended purpose. (4) Any comment on council tax/rateable value, rates payable, and permitted planning use, is given in good faith from information informally supplied to us. Intending purchasers must seek confirmation direct from the relevant Local Authority. (5) No person employed by (DD) has any authority to enter into any contract, nor make or give any warranty or representation whatsoever in relation to this property. (6) (DD) do not hold themselves responsible, in negligence or otherwise, for any loss arising from the use of these particulars, nor for any expense incurred in viewing the premises or for abortive journeys. (7) All prices are exclusive of VAT (unless otherwise stated). Terms quoted are subject to contract. NB. PLEASE NOTE that some developments are subject to management company conditions and charges. Solicitors are to advise of any liability/ies.