

**8 Wharf Villas, Boxmoor,
Hemel Hempstead,
Hertfordshire, HP1 1QA**

David
Doyle
Sales and Lettings

Price £325,000 Leasehold



Located in the heart of Boxmoor `Village` is this highly sought after 2 Bedroom first floor maisonette with outstanding views over Blackbirds Moor and conveniently located for local shops, schools, amenities and main line station with links to London Euston. The property comprises a generous open plan Lounge Dining Room with windows to the front that offer outstanding views, fitted Kitchen and a Hall Way that leads to the 2 Bedrooms and the Bathroom Room. The property benefits from double glazing, gas heating to radiators, a communal Garden, allocated Parking and NO UPPER CHAIN. The vendor has informed us that they are in the process of extending the lease to 999 years. VIEWING IS HIGHLY RECOMMENDED.

`Boxmoor Village` has a range of shopping facilities and amenities, including the Village Hall and Playhouse, restaurants, public houses and Leisure Centre. The Moor is a beautiful open space with a cricket pitch and the Grand Union Canal and River Bulbourne running through it. The mainline railway station offer an excellent service to London Euston (26 mins).

This 2 Bedroom first floor maisonette in the heart of Boxmoor `Village`

Outstanding views over Blackbirds Moor and convenient for local shops and amenities

Open plan lounge dining room

Fitted kitchen

Bathroom

Two good sized Bedrooms

Gas heating to radiators

Parking

Communal garden

NO UPPER CHAIN

Council Tax Band C

Tenure -Leasehold



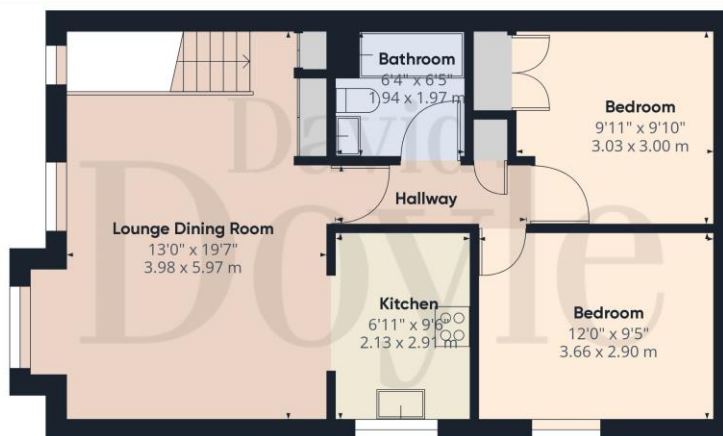
Ground Floor

Approximate total area[®]
648.89 ft²
60.28 m²

Excluding balconies and terraces

While every attempt has been made to ensure accuracy, all measurements are approximate, not to scale. This floor plan is for illustrative purposes only.

GIRAFFE 360



Floor 1

Scan here for more details





CALL 01442 248671 OR EMAIL BOXMOOR@DAVIDDOYLE.CO.UK TO BOOK A VIEWING

David Doyle Estate Agents (DD), for themselves and for the vendors of this property whose agents they are, give notice that: (1) These particulars and floorplans are set out as a general outline only for the guidance of the intending purchasers and do not constitute the whole, nor any part, of an offer or contract. (2) All descriptions, dimensions, floorplan dimensions, references to condition, necessary permissions for use and occupation, and any other details, are given in good faith and are believed to be correct at the date of compilation, but any intending purchasers should not rely on them as statements or representation of fact and must satisfy themselves as to their accuracy. (3) All plant, machinery, equipment, services, fixtures and fittings referred to were present at the date of first inspection, but have not been tested and we give no warranty or representation as to their condition, operation, or fitness for the intended purpose. (4) Any comment on council tax/rateable value, rates payable, and permitted planning use, is given in good faith from information informally supplied to us. Intending purchasers must seek confirmation direct from the relevant Local Authority. (5) No person employed by (DD) has any authority to enter into any contract, nor make or give any warranty or representation whatsoever in relation to this property. (6) (DD) do not hold themselves responsible, in negligence or otherwise, for any loss arising from the use of these particulars, nor for any expense incurred in viewing the premises or for abortive journeys. (7) All prices are exclusive of VAT (unless otherwise stated). Terms quoted are subject to contract. NB. PLEASE NOTE that some developments are subject to management company conditions and charges. Solicitors are to advise of any liability/ies.