

**83 Valley Green, Hemel
Hempstead, Hertfordshire,
HP2 7RG**

David
Doyle
Sales and Lettings

Guide Price £155,000 Leasehold



This 1 bedroom ground floor apartment is conveniently located for for local shops and amenities while benefiting from a long lease and no upper chain. The apartment is arranged with an open plan lounge dining room, fitted kitchen, bathroom and a spacious bedroom. The property benefits from communal parking and a communal garden. NO UPPER CHAIN. Viewing is highly recommended.

This property is situated close to a wooded copse with its peaceful bridleway, the Nicky Line cycle and walking route, Cupid Green Park with it Adventure Playground, Tennis Courts, Netball Courts and 3G floodlit sports pitch are all nearby.

Hemel Hempstead with its Malls of Riverside and The Marlowes offers a full range of shopping facilities and other amenities. For the commuter the M1 and M25 are close at hand, whilst the mainline railway station offers a fast and frequent service to London Euston.

Ground floor 1 bedroom apartment

No upper chain

Long lease

Open plan lounge dining room

Fitted kitchen

Bathroom

Spacious bedroom

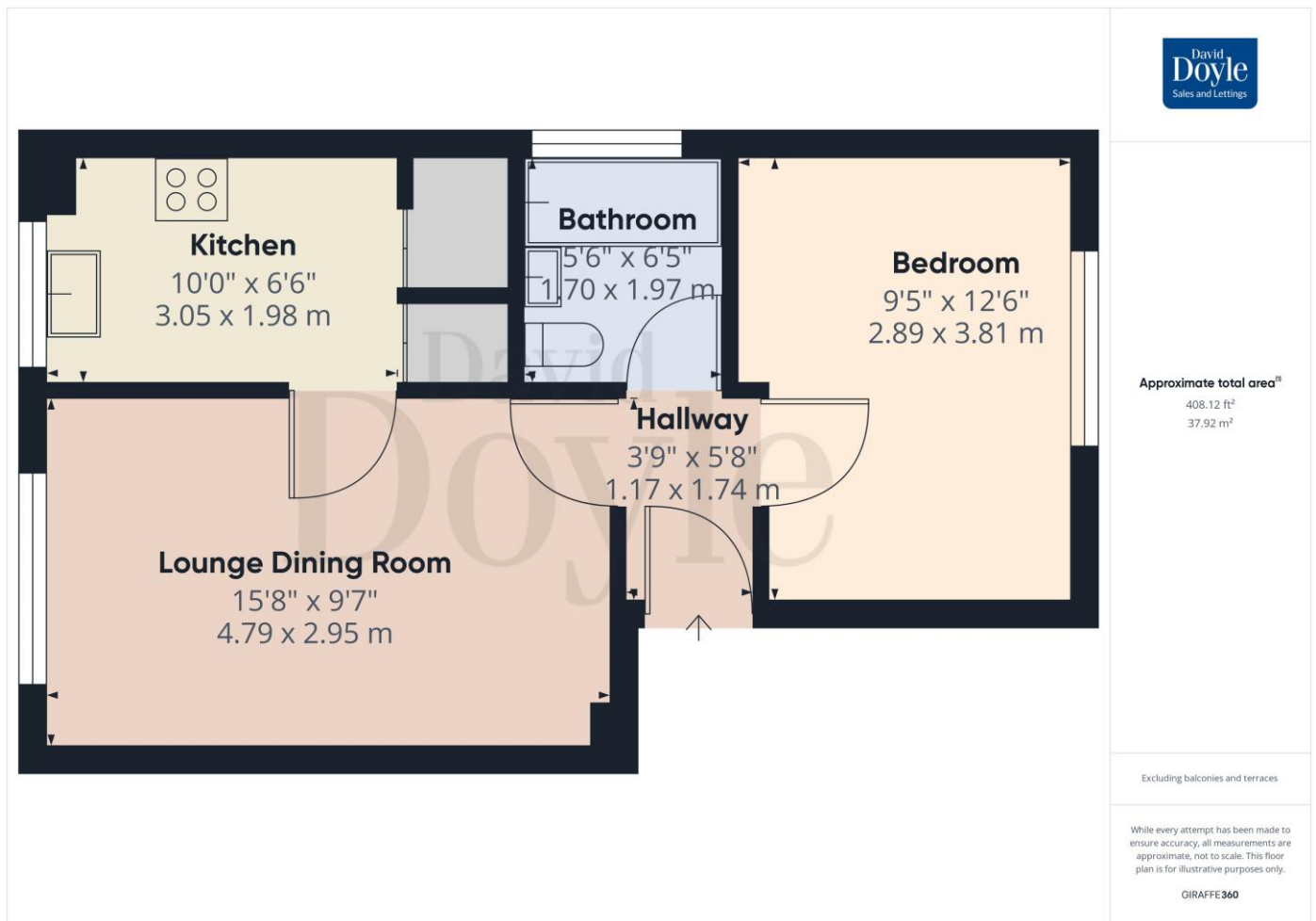
Communal garden

Communal parking

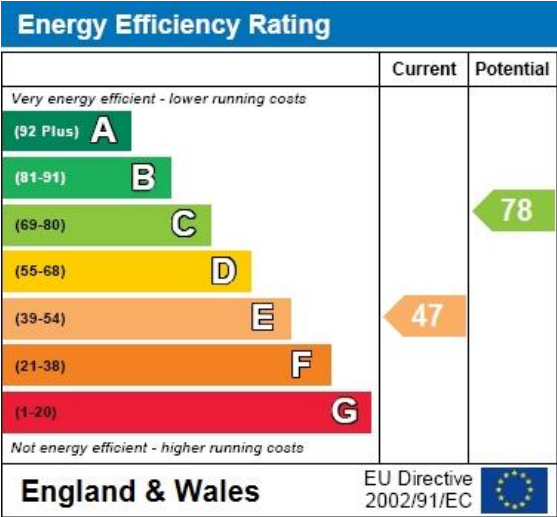
Viewing is a MUST

Council Tax Band B

Tenure -Leasehold



Scan here for more details





CALL 01442 248671 OR EMAIL BOXMOOR@DAVIDDOYLE.CO.UK TO BOOK A VIEWING

David Doyle Estate Agents (DD), for themselves and for the vendors of this property whose agents they are, give notice that: (1) These particulars and floorplans are set out as a general outline only for the guidance of the intending purchasers and do not constitute the whole, nor any part, of an offer or contract. (2) All descriptions, dimensions, floorplan dimensions, references to condition, necessary permissions for use and occupation, and any other details, are given in good faith and are believed to be correct at the date of compilation, but any intending purchasers should not rely on them as statements or representation of fact and must satisfy themselves as to their accuracy. (3) All plant, machinery, equipment, services, fixtures and fittings referred to were present at the date of first inspection, but have not been tested and we give no warranty or representation as to their condition, operation, or fitness for the intended purpose. (4) Any comment on council tax/rateable value, rates payable, and permitted planning use, is given in good faith from information informally supplied to us. Intending purchasers must seek confirmation direct from the relevant Local Authority. (5) No person employed by (DD) has any authority to enter into any contract, nor make or give any warranty or representation whatsoever in relation to this property. (6) (DD) do not hold themselves responsible, in negligence or otherwise, for any loss arising from the use of these particulars, nor for any expense incurred in viewing the premises or for abortive journeys. (7) All prices are exclusive of VAT (unless otherwise stated). Terms quoted are subject to contract. NB. PLEASE NOTE that some developments are subject to management company conditions and charges. Solicitors are to advise of any liability/ies.