

David  
**Doyle**

Boxmoor/ Hemel Hempstead / Berkhamsted / Tring

01442 248671

## 52 Tattershall Drive

Hemel Hempstead,  
Hertfordshire HP2 7QF

**Price £725 pcm**  
To Let



Spacious 1 Bedroom 2<sup>nd</sup> floor Apartment located in this popular residential situation.

Convenient for local shops, Maylands Avenue, Motorway links and Green line service to London. Lounge/Dining room.

Fitted Kitchen. Bathroom.

Communal parking  
Communal gardens



## COMMUNAL ENTRANCE

### Stairs to 2nd floor

## FRONT DOOR

## ENTRANCE HALL

Access to loft space. Electric panel heater. Doors to:-

## LOUNGE / DINING ROOM 15'9" (4.8m) x 9'7" (2.92m)

Double glazed casement window with glorious views over wooded copse. Feature electric fire. Door to:-

## KITCHEN 10'1" (3.07m) x 6'6" (1.98m)

Fitted with a single bowl single drainer stainless steel sink unit and a range of matching wall and floor mounted unit comprising both cupboards and drawers. Colour co-ordinated roll top work surfaces and part tiled walls. Integrated oven and grill. Integrated hob. Automatic washing machine. Fridge freezer.

Airing cupboard. Storage cupboard. Double glazed casement window to front aspect with glorious view over the wooded copse.

## BEDROOM 12'8" (3.86m) x 9'8" (2.95m)

Double glazed casement window to front aspect. Range of fitted wardrobes and dressing table unit.

## BATHROOM 6'6" (1.98m) x 5'7" (1.7m)

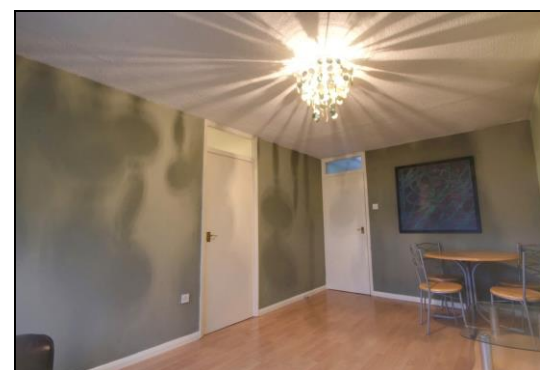
Fitted in white and comprising panelled bath with Triton shower over, pedestal wash hand basin and low level WC. Colour co-ordinated part tiled walls.

## OUTSIDE

## COMMUNAL PARKING

## COMMUNAL GARDENS

## HR1350



David Doyle Estate Agents (DD), for themselves and for the vendors of this property whose agents they are, give notice that: (1) These particulars and floorplans are set out as a general outline only for the guidance of the intending purchasers and do not constitute the whole, nor any part, of an offer or contract. (2) All descriptions, dimensions, floorplan dimensions, references to condition, necessary permissions for use and occupation, and any other details, are given in good faith and are believed to be correct at the date of compilation, but any intending purchasers should not rely on them as statements or representation of fact and must satisfy themselves as to their accuracy. (3) All plant, machinery, equipment, services, fixtures and fittings referred to were present at the date of first inspection, but have not been tested and we give no warranty or representation as to their condition, operation, or fitness for the intended purpose. (4) Any comment on council tax/rateable value, rates payable, and permitted planning use, is given in good faith from information informally supplied to us. Intending purchasers must seek confirmation direct from the relevant Local Authority. (5) No person employed by (DD) has any authority to enter into any contract, nor make or give any warranty or representation whatsoever in relation to this property. (6) (DD) do not hold themselves responsible, in negligence or otherwise, for any loss arising from the use of these particulars, nor for any expense incurred in viewing the premises or for abortive journeys. (7) All prices are exclusive of VAT (unless otherwise stated). Terms quoted are subject to contract. NB. PLEASE NOTE that some developments are subject to management company conditions and charges. Solicitors are to advise of any liability/ies.