



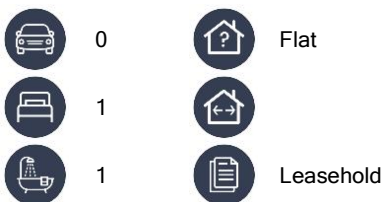
**Fahren**  
Estate Agents



The Warehouse, 2 Avenue Lane, Bournemouth

Price £149,950 Leasehold

Modern Warehouse Development | Stunning Second Floor Apartment |  
1 Bedroom | Open Plan Living/DiningRoom/Kitchen | Modern  
Bathroom | Double Glazed Windows | Energy Efficient Modern Electric  
Heaters | Town Centre Location | Long Lease | No Chain





The Warehouse, 2 Avenue Lane

Price £149,950



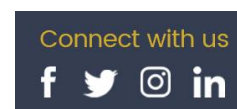
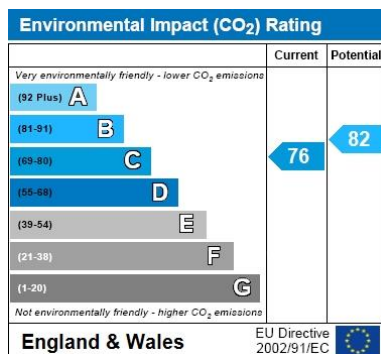
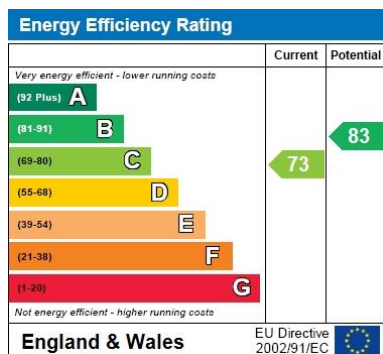
Fahren Estate Agents are delighted to offer for sale this modern and bright apartment in this Warehouse style nestled in the Centre of Bournemouth. Ideal for the first-time buyer or buy to let investor. This 2nd floor apartment in brief comprises an entrance hall, open plan living/dining/kitchen, double bedroom & modern Bathroom. The apartment benefits from double glazed windows and energy efficient electric heating. Fahren Estate Agents highly recommend an internal viewing .

Lease 114 Years Remaining

Ground Rent £150 per annum

Service Charge ££1500 per half year ( includes Buildings

Insurance and Reserve Fund & Levy for future planned works)

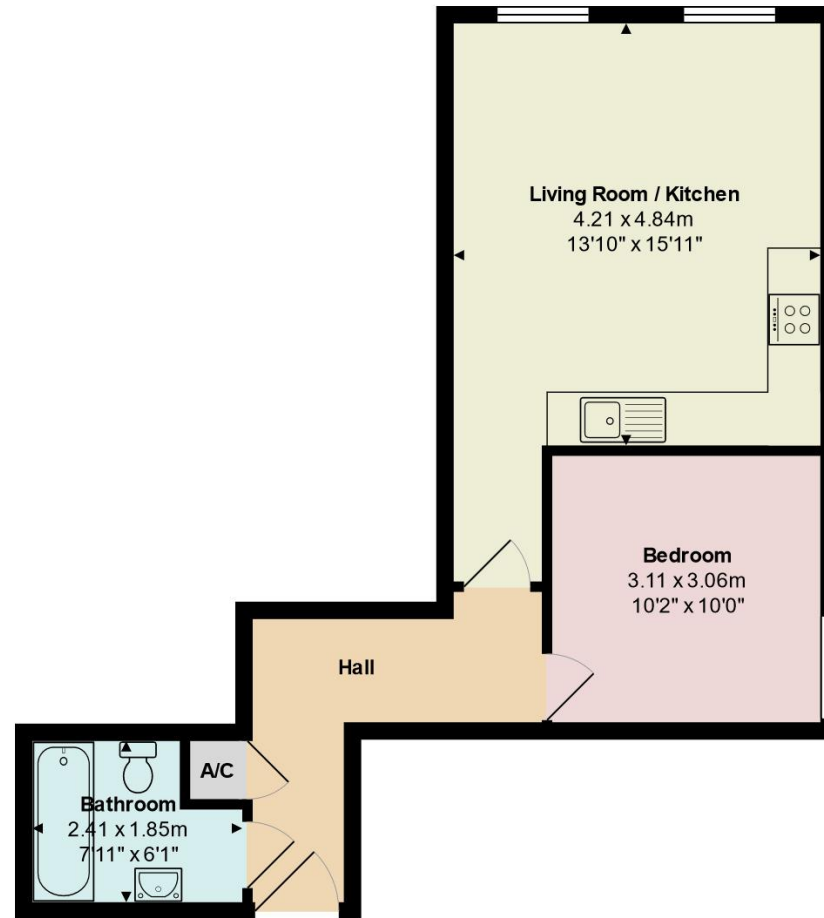


If you would like to book a viewing or find out how much your property is worth please contact us

Tel: 01202 551022

Email: [inf@fahren.co.uk](mailto:inf@fahren.co.uk)

Web: [www.fahren.co.uk](http://www.fahren.co.uk)



Total Area: 43.0 m<sup>2</sup> ... 463 ft<sup>2</sup>

All measurements are approximate and for display purposes only