



Fahren
ESTATE AGENTS

Flat 16 Meyrick Park Mansions, 28 Bodorgan Road, Meyrick Park, Bournemouth, BH2

6NH

Price £210,000 Leasehold

AUTHENTIC ~ PASSIONATE ~ PROFESSIONAL

Tel: 01202 551022 | Email: castlelane@fahren.co.uk | Web: www.fahren.co.uk

Meyrick Park , Bournemouth* Sought After Location*

Price £210,000

A Spacious & Well Presented Mansion Apartment | Highly Sought After Meyrick Park Location | Lift / Character Communal Hallway | Entrance Hall/ Storage | Spacious Living/Dining Room With Bay Window | Modern Kitchen | Two Double Bedrooms (Fitted Wardrobes in Bedroom 1) | Luxury Bathroom | Garage | Long Lease



1



Flat



2



1033 sqft (96 sqm)



1



Leasehold





Meyrick Park , Bournemouth* Sought After Location*

Price £210,000

Meyrick Park Mansions is a purpose built development of mansion apartments set in this highly sought after area of Meyrick Park. Apartment 16 is located on the second floor and can be accessed by an impressive communal hallway or lift. The apartment has undergone modernisation in recent years which includes refurbished kitchen a luxury bathroom. The apartment has been redecorated with neutral tones and benefits from UPVC double glazed windows and a garage in the block. Bodorgan Road is conveniently located with easy access to the town centre and communication links to all regions are excellent. Fahren Estate Agents highly recommend an internal viewing.

Meyrick Park is a beautiful area with plenty of things to do. The park itself offers a tranquil escape from the hustle and bustle of the city, with its lush greenery and peaceful atmosphere. For those who enjoy golf, the Meyrick Park Golf Course is just a

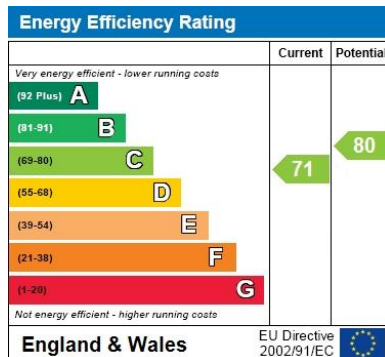
stone's throw away. The area is also home to a number of excellent restaurants and cafes, as well as a variety of shops and boutiques. With its convenient location and abundance of amenities, Meyrick Park is the perfect place to call home.

Leasehold : 124years approx

Ground Rent:peppercorn

Service Charge £1304 per quarter .

Fahren



Connect with us



If you would like to book a viewing or find out how much your property is worth please contact us

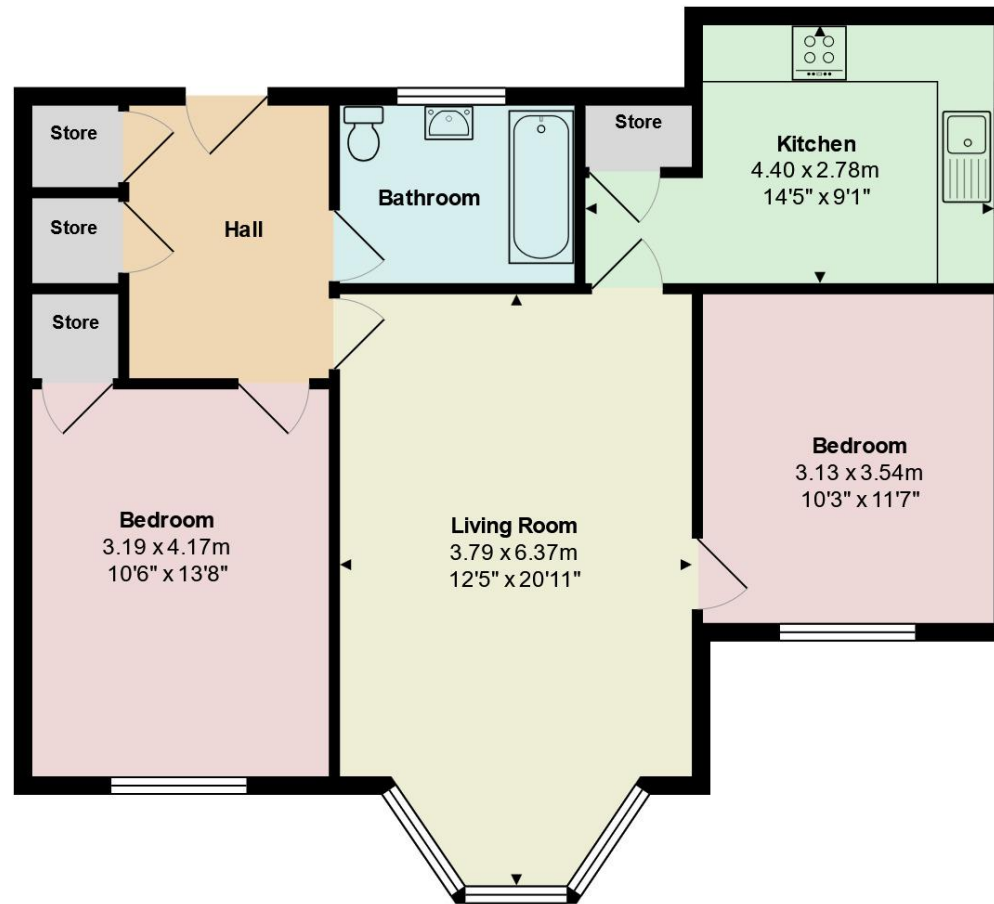
Tel: 01202 551022

Email: castlelane@fahren.co.uk

Web: www.fahren.co.uk







Total Area: 74.0 m² ... 797 ft²

All measurements are approximate and for display purposes only