



Fahren
ESTATE AGENTS

10a Dingle Road, Boscombe Manor, Bournemouth, BH5 2DR
Price £370,000 Leasehold

AUTHENTIC ~ PASSIONATE ~ PROFESSIONAL
Tel: 01202 551022 | Email: castlelane@fahren.co.uk | Web:
www.fahren.co.uk

Boscombe Manor, Bournemouth

Price £370,000

A Character First Floor Apartment | Stunning Location Close to Beach | Spacious Entrance Hallway | Lounge with Bay Window | Three Double Bedrooms | Kitchen/Breakfast Room | Modern Bathroom | Front Garden Portion | Garage | In Need of Some Updating



1



Apartment



3



Leasehold



1





Boscombe Manor, Bournemouth

Price £370,000

A rare opportunity to acquire a unique first-floor apartment conversion in the heart of Boscombe Manor. This character conversion is one of only three apartments in the development, offering ample space and charm.

As you enter the property, you are greeted by a large hallway leading to a spacious kitchen breakfast room filled with natural light from the double glazed bay windows. With three double bedrooms, a study, a bathroom, and a separate WC.

Outside, you have your own garage and a charming front garden. The property comes with a long lease and is offered chain-free

Located in Boscombe Manor and just a short walk away from the beach, this property offers the best of coastal living. Explore the vibrant Southbourne Grove, known for its shops, cafes, and restaurants, or take a leisurely stroll to the nearby schools.

Contact us today to arrange a viewing.

Tenure: Leasehold 189 years from 16 April 1981 (145 years remaining)

Service Charge : £100 per month

Fahren

Connect with us



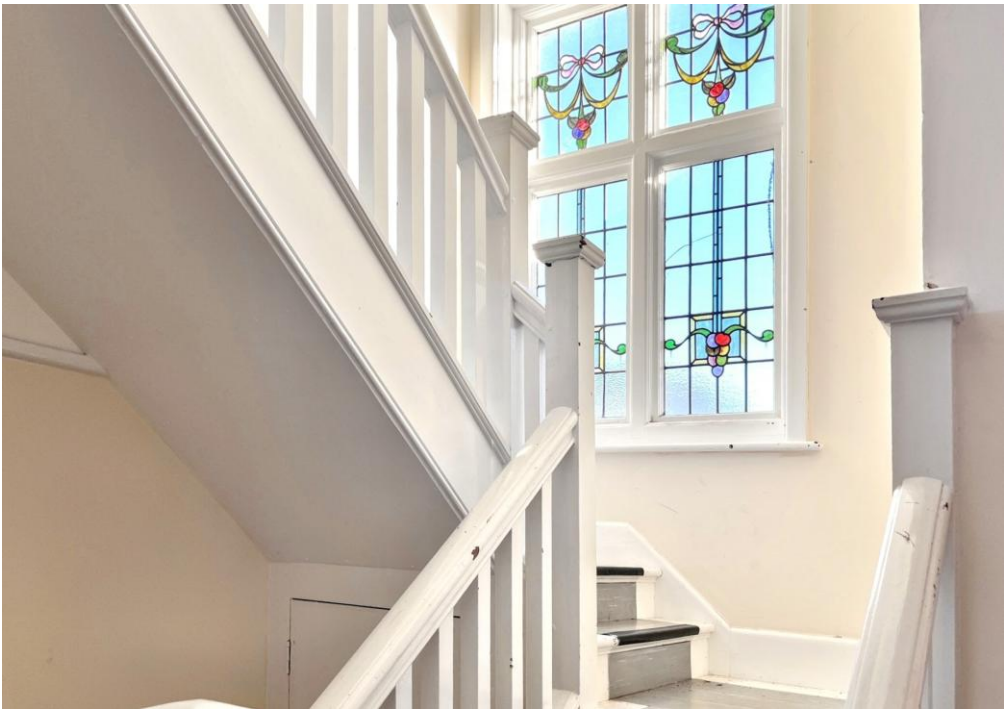
If you would like to book a viewing or find out how much your property is worth please contact us

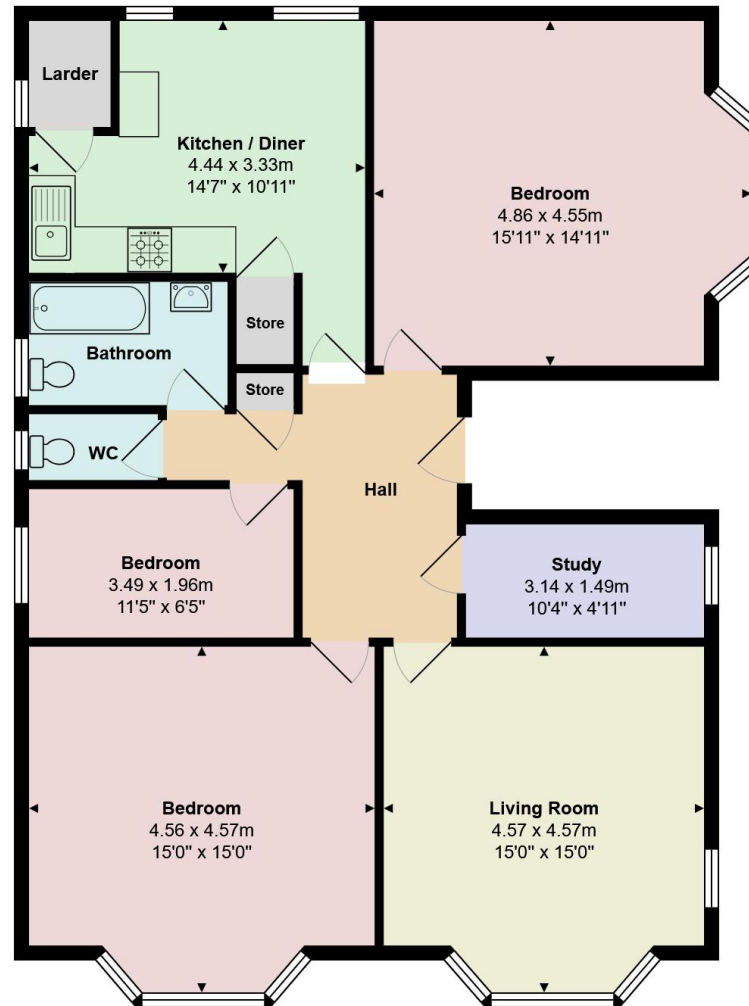
Tel: 01202 551022

Email: inf@fahren.co.uk

Web: www.fahren.co.uk







Total Area: 106.0 m² ... 1141 ft²

All measurements are approximate and for display purposes only