

Fahren
ESTATE AGENTS



18 Barnes Crescent, Ensbury Park, Bournemouth, BH10 5AW
Guide Price £250,000 Freehold

AUTHENTIC ~ PASSIONATE ~ PROFESSIONAL
Tel: 01202 551022 | Email: inf@fahren.co.uk | Web: www.fahren.co.uk

Ensbury Park * Garden Flat*

Guide Price £250,000

A Stunning First Floor Flat | Own Entrance | Hall & Landing | Living Room | 2 Bedrooms | Modern Style Kitchen | Shower Room | Loft | Rear Garden With Large Decking / Entertaining Area | Freehold



2



Flat



2



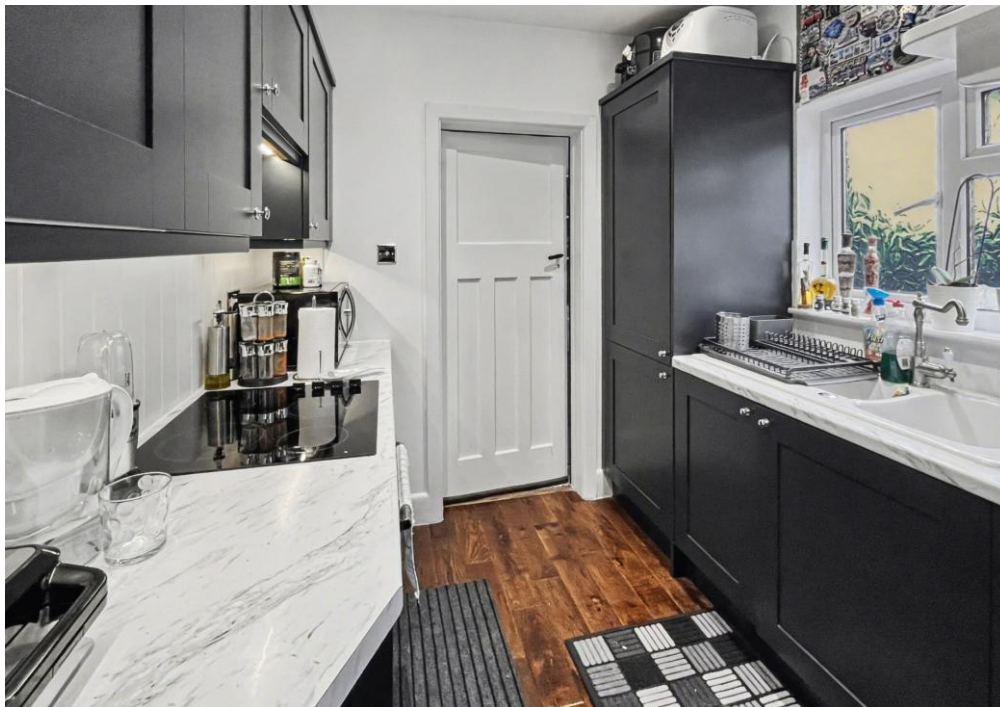
495 sqft (46 sqm)



1



Freehold





Ensburry Park * Garden Flat*

Guide Price £250,000

Fahren Estate Agents are delighted to present this beautifully appointed first-floor conversion, offering the perfect blend of modern style and outdoor living. One of only two apartments in the building, this home feels more like a private house, boasting its own entrance and the rare benefit of a Freehold title.

The Home

Inside, the property has been meticulously maintained and stylishly updated, offering a turnkey solution for first-time buyers or those looking to downsize without compromising on quality.

Private Entrance: Your own front door leads to a welcoming hallway and landing area.

Living Space: A bright and airy living room, perfect for relaxing or entertaining.

Stylish Kitchen: A contemporary kitchen designed with both aesthetics and functionality in mind.

Bedrooms: Two well-proportioned bedrooms offering flexible living arrangements.

Luxury Shower Room: A sleek, modern shower room finished to a high standard.

Comfort & Efficiency: Fully double-glazed windows and gas central heating throughout ensure year-round comfort.

The Great Outdoors

The true "wow factor" of this property lies outside. Rarely do apartments offer such an expansive and versatile outdoor space.

Large Rear Garden: An exceptionally generous private garden, ideal for those with a green thumb.

Entertaining Terrace: A stunning, elevated terrace designed for summer BBQs and alfresco dining.

All-Weather Area: A clever under-cover section provides a sheltered spot to enjoy the garden regardless of the British weather.

Storage: Two dedicated sheds provide ample space for bikes, tools, or outdoor gear.

Parking & Exterior

Newly Renewed Driveway: Excellent curb appeal with a freshly finished driveway.

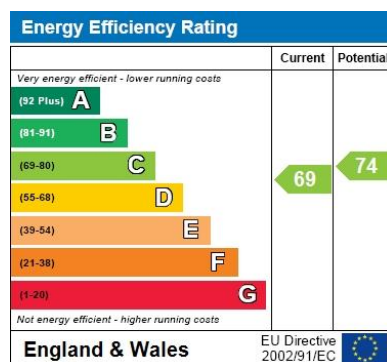
Off-Road Parking: Allocated parking for one vehicle.

Location

Situated in the perennially popular Ensburry Park, Barnes Crescent is a quiet residential pocket with easy access to Bournemouth town centre, Winton high street, and the university. Local parks, shops, and bus routes are all within easy walking distance.

Agent's Note: With its own entrance, private garden, and Freehold status, this property is a rare find in the current market. Internal viewing is highly recommended to appreciate the finish and scale of the garden.

Fahren

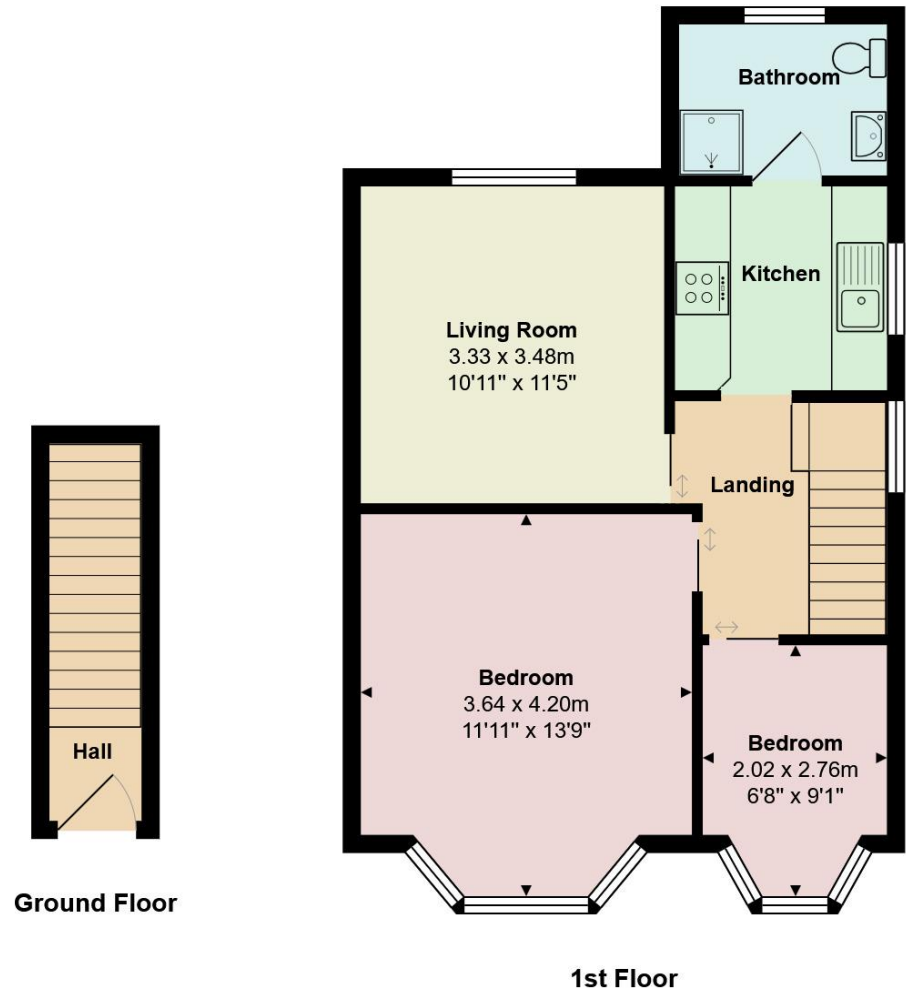


Connect with us









Total Area: 51.5 m² ... 554 ft²

All measurements are approximate and for display purposes only