

Cleeve House, Hillside, Codford, Warminster, BA12 0JZ

Approximate Area = 2394 sq ft / 222.4 sq m

Limited Use Area(s) = 46 sq ft / 4.2 sq m

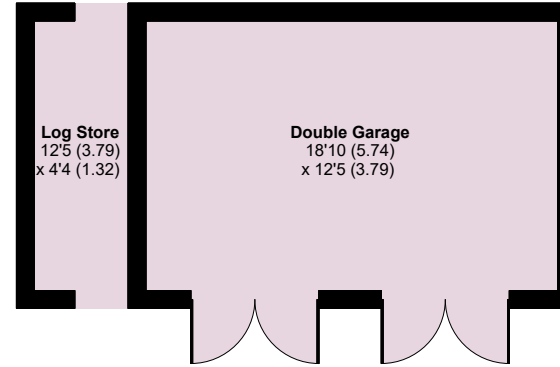
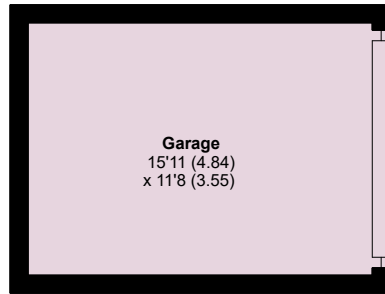
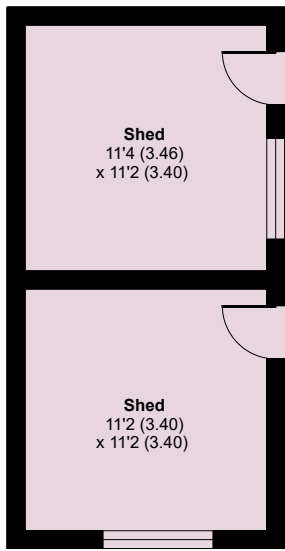
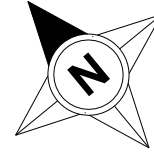
Garages = 421 sq ft / 39.1 sq m

Outbuildings = 305 sq ft / 28.3 sq m (excludes WC)

Total = 3166 sq ft / 294 sq m

For identification only - Not to scale

ANNEXE

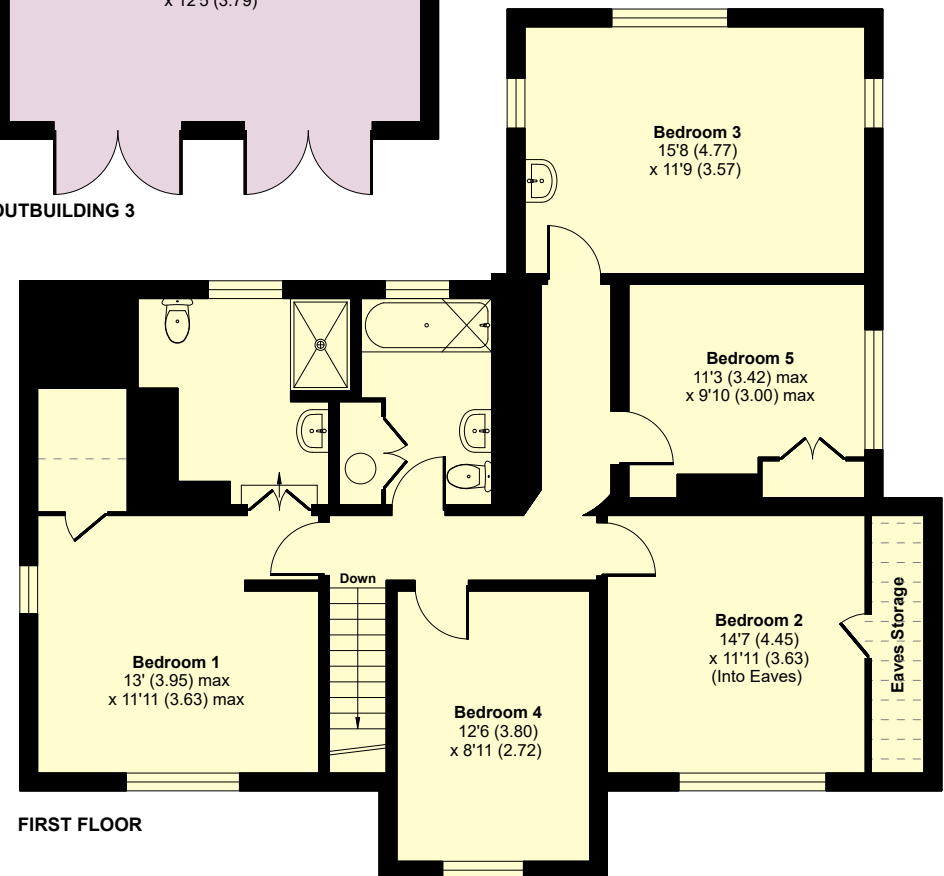
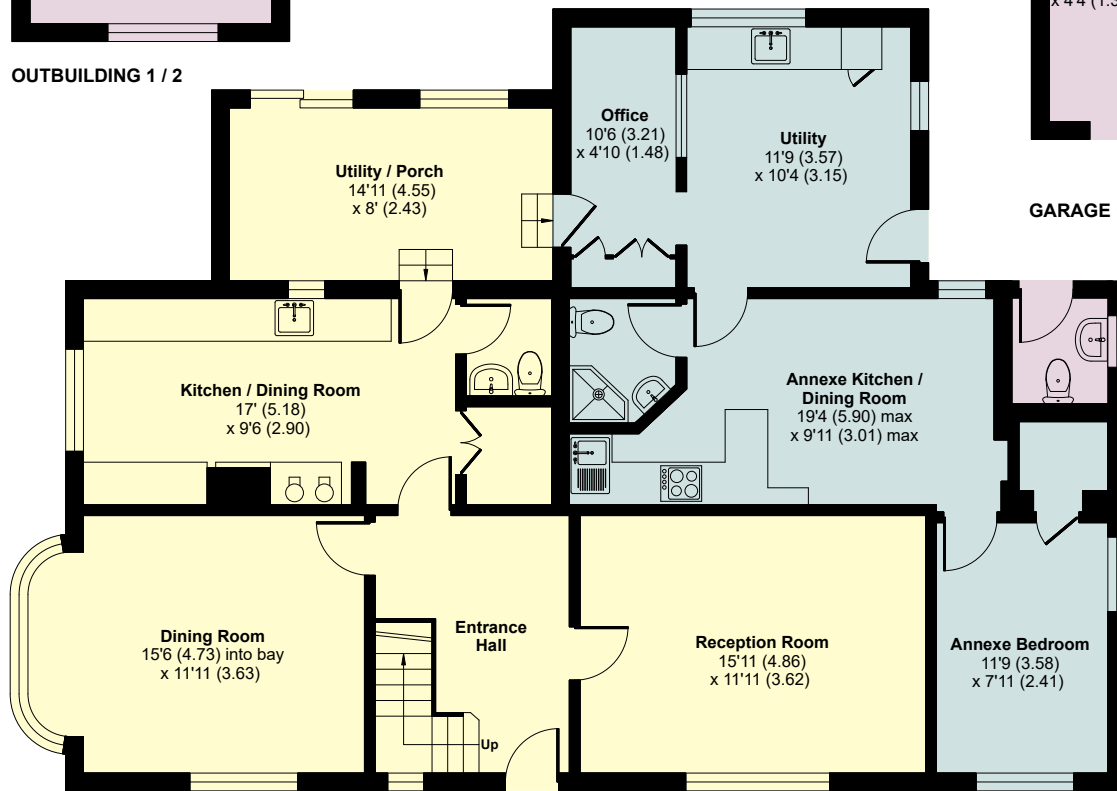


Denotes restricted head height

OUTBUILDING 1 / 2

GARAGE 2

GARAGE 1 / OUTBUILDING 3



GROUND FLOOR

FIRST FLOOR



Floor plan produced in accordance with RICS Property Measurement 2nd Edition, Incorporating International Property Measurement Standards (IPMS2 Residential). © nichecom 2025. Produced for Fox Grant. REF: 1364891

