

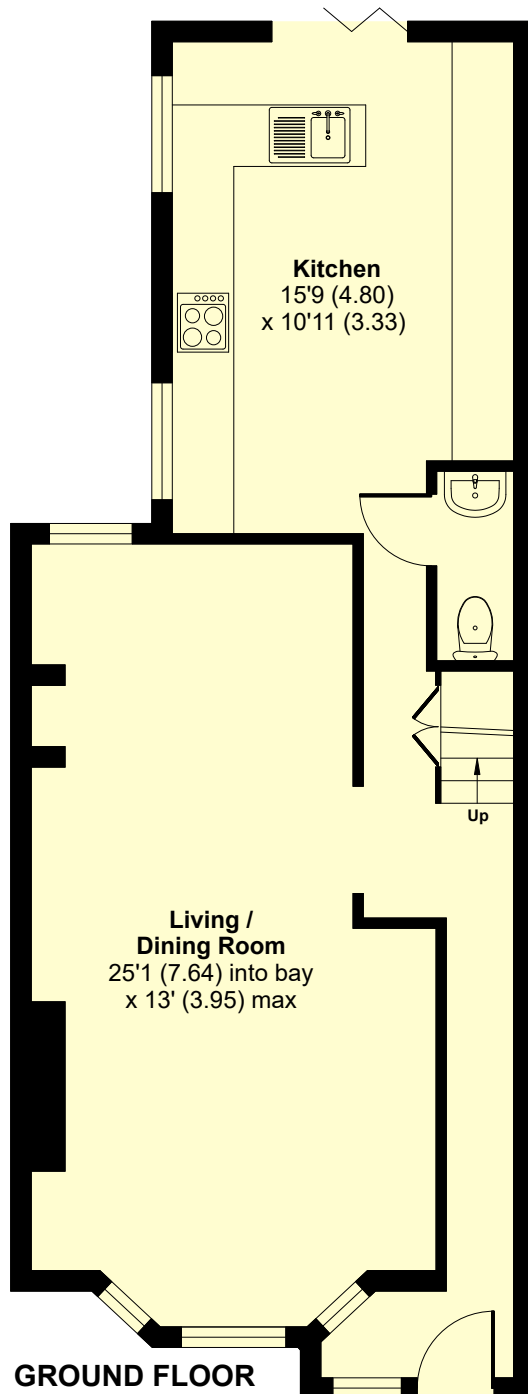
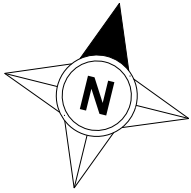
Pottery Road, Poole, BH14

Approximate Area = 1295 sq ft / 120.3 sq m

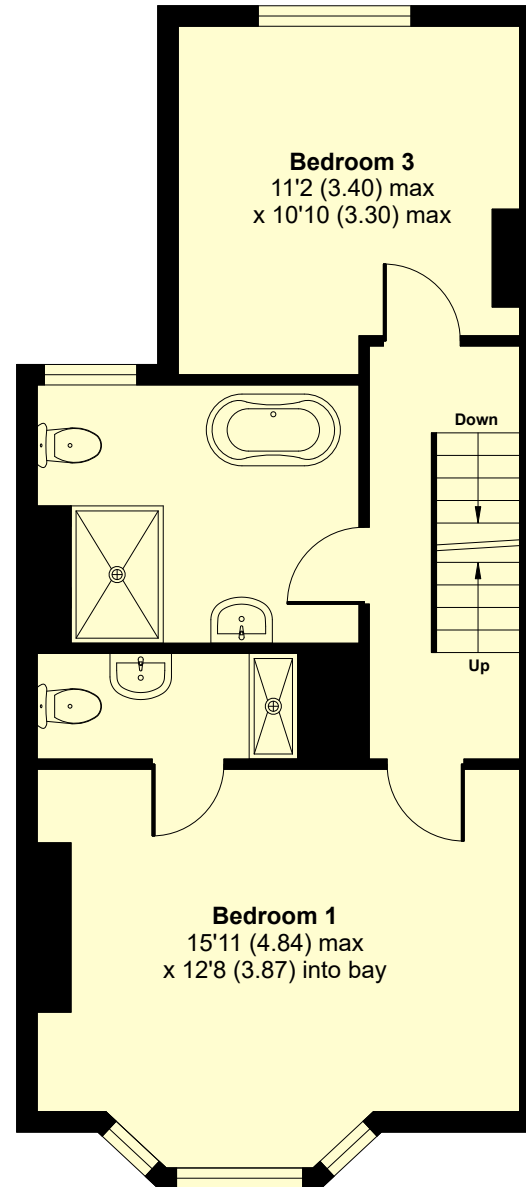
Outbuilding = 10 sq ft / 0.9 sq m

Total = 1305 sq ft / 121.2 sq m

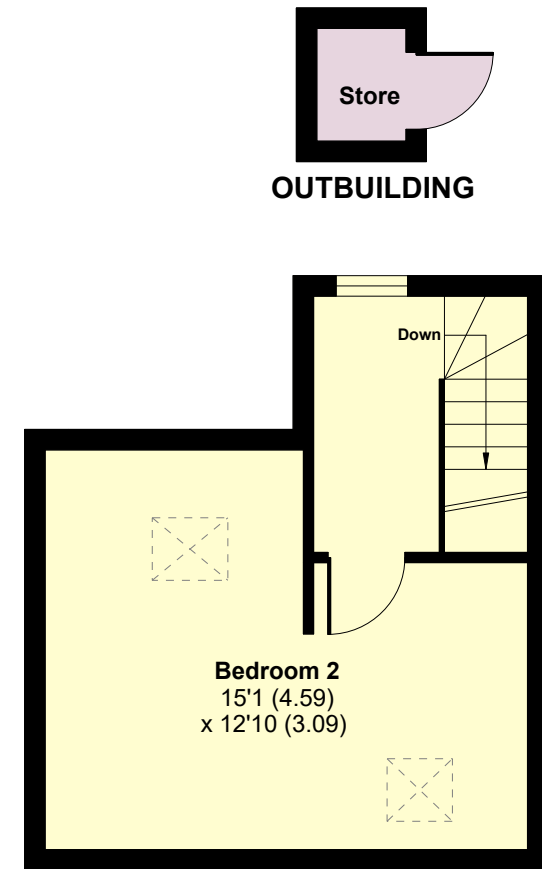
For identification only - Not to scale



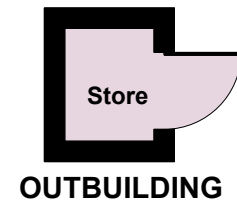
GROUND FLOOR



FIRST FLOOR



SECOND FLOOR



Floor plan produced in accordance with RICS Property Measurement 2nd Edition, Incorporating International Property Measurement Standards (IPMS2 Residential). © nichecom 2025. Produced for Fox Grant. REF:1295612

