

Grove House, Pedlars Grove, Chapmanslade, Westbury, BA13 4AZ

Approximate Area = 1935 sq ft / 179.7 sq m

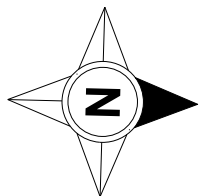
Limited Use Area(s) = 48 sq ft / 4.4 sq m

Annexe = 344 sq ft / 31.9 sq m

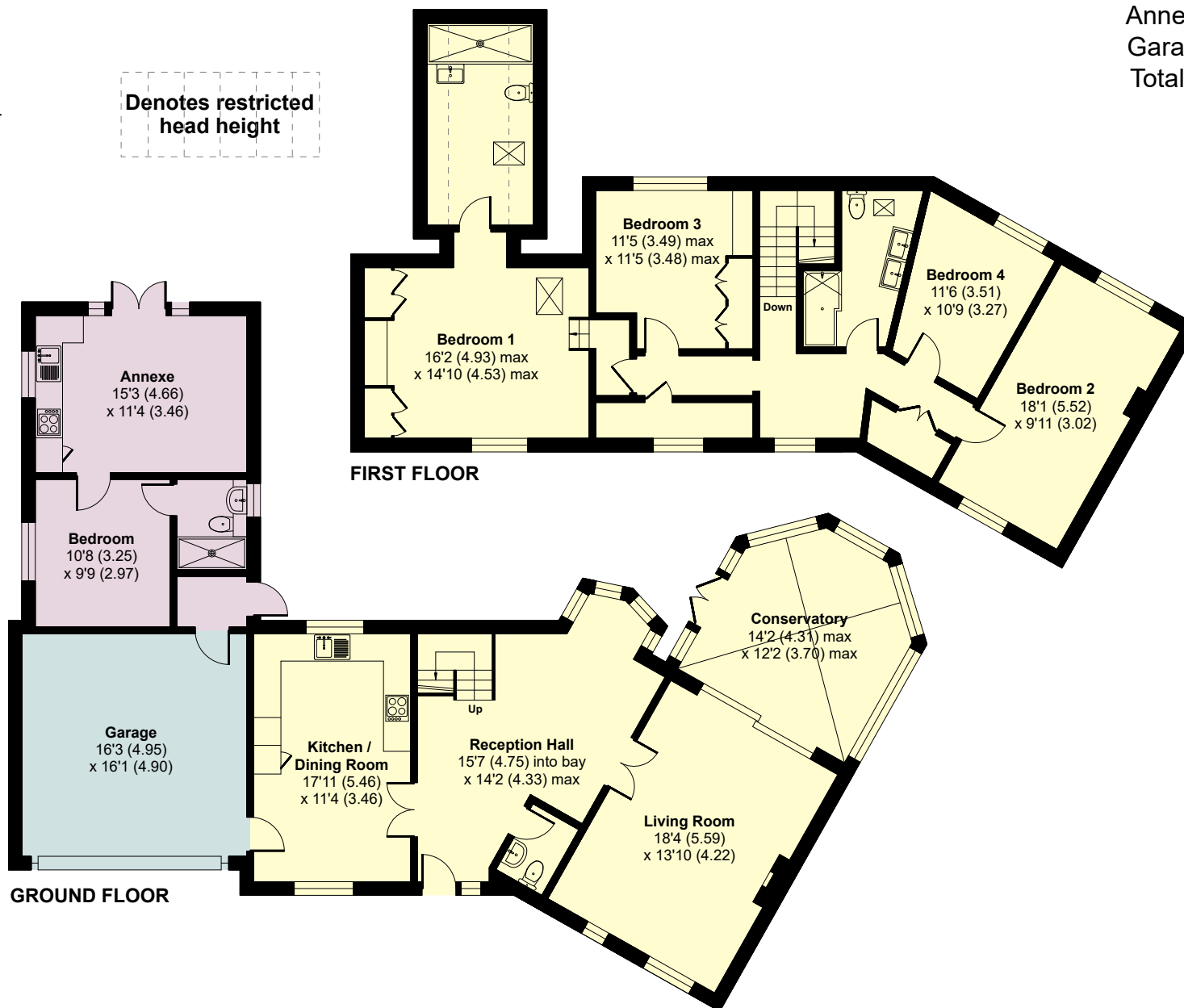
Garage = 261 sq ft / 24.2 sq m

Total = 2588 sq ft / 240.2 sq m

For identification only - Not to scale



Denotes restricted head height



Floor plan produced in accordance with RICS Property Measurement 2nd Edition, Incorporating International Property Measurement Standards (IPMS2 Residential). © nichecom 2026. Produced for Fox Grant. REF: 1396637

