

34 Royal Victoria Gardens, Marine Wharf, Canary Wharf, London, SE16 7EN



Price £1,600 pcm

Farrell Lewis are proud to present this stylish 2 bedroom apartment that consists of two spacious double bedrooms, with a high spec bathroom and an open plan reception room with large windows allowing plenty of natural lighting into this luxurious apartment with ample storage throughout.

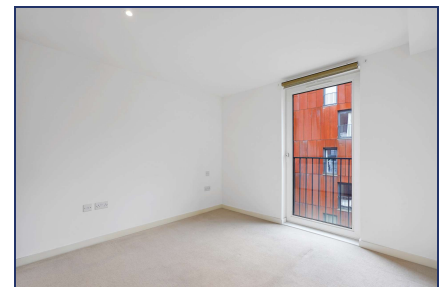
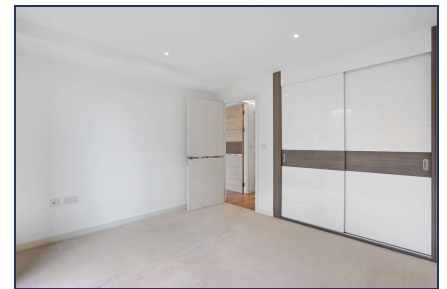
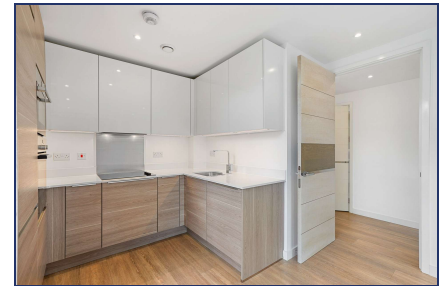
- 24 Hr Concierge
- 2 Bedrooms
- 1 Balcony
- Double Glazing
- Available 5th July 2019
- Newly Built Development
- 1 Bathroom
- 1 Large Terrace
- Wooden Flooring



This stylish 2 bedroom apartment consists of two spacious double bedroom, with a high spec bathroom and an open plan reception room with large windows allowing plenty of natural lighting into this luxurious apartment with ample storage throughout. The Kitchen is fully fitted with a dishwasher, washer/dryer.

Luxurious apartments at the Marine Wharf development offers an ideal versatile living for the contemporary design and high spec throughout the whole development. The property is within walking distance to great transport links with Surrey Quays Overground station and Canada water station both just minutes walk away taking you into Central London, the City and Canary Wharf. Not only does this property is close to fantastic transport links but there is a big 24 hour supermarket with a small entertainment park which includes a cinema, bowling alley and eat in restaurants just a short bus ride away.

AVAILABLE 1st October 2020
UNFURNISHED



2 East Vale London W3 7RU

Tel: 020 8743 3323 | Fax: 020 8740 0350 | Email: info@farrelllewis.co.uk

<https://www.farrelllewis.co.uk>

