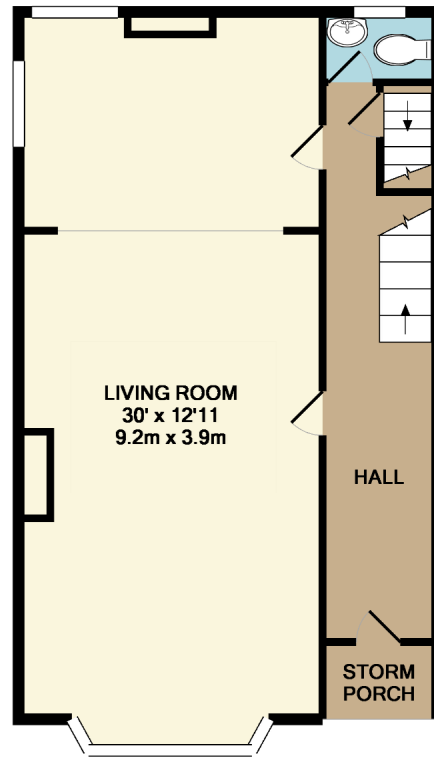
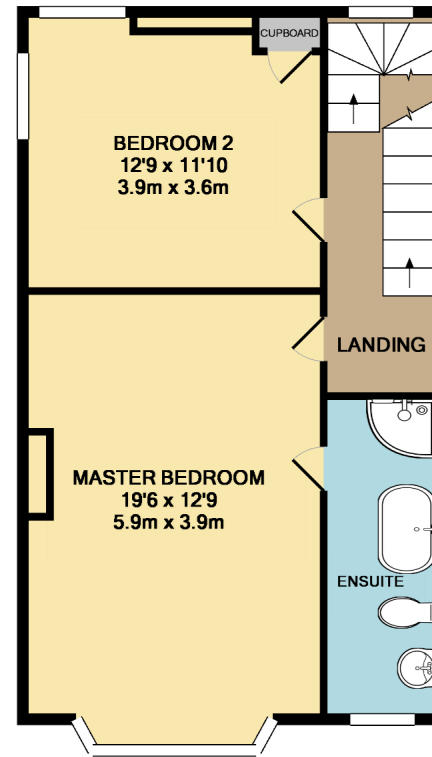


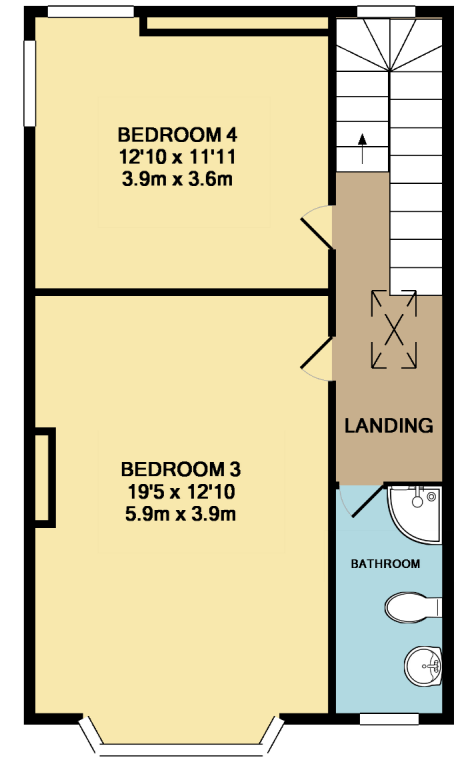
LOWER GROUND FLOOR
APPROX. FLOOR
AREA 731 SQ.FT.
(67.9 SQ.M.)



GROUND FLOOR
APPROX. FLOOR
AREA 543 SQ.FT.
(50.4 SQ.M.)



1ST FLOOR
APPROX. FLOOR
AREA 543 SQ.FT.
(50.4 SQ.M.)



2ND FLOOR
APPROX. FLOOR
AREA 543 SQ.FT.
(50.4 SQ.M.)



TOTAL APPROX. FLOOR AREA 2359 SQ.FT. (219.2 SQ.M.)

Made with Metropix ©2018