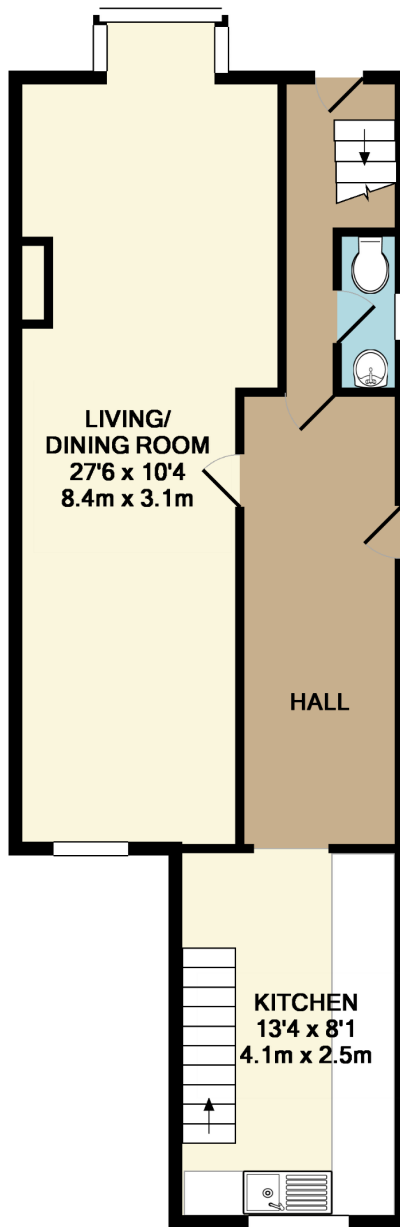
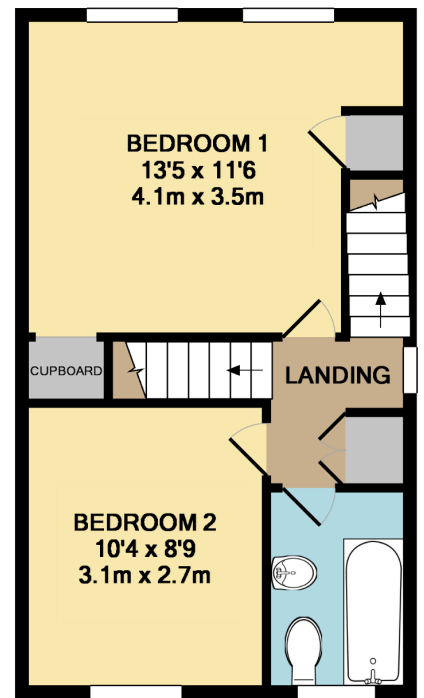


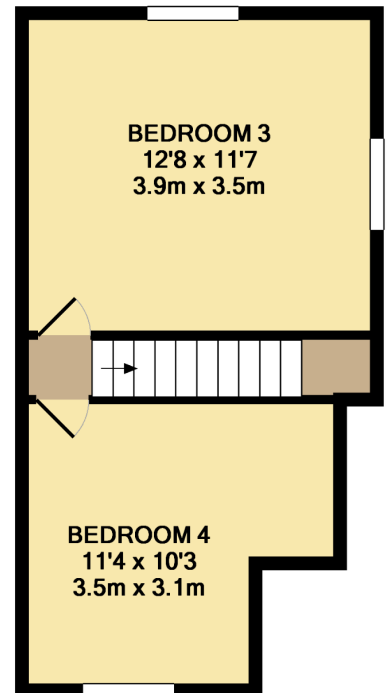
BASEMENT LEVEL
APPROX. FLOOR
AREA 263 SQ.FT.
(24.4 SQ.M.)



GROUND FLOOR
APPROX. FLOOR
AREA 496 SQ.FT.
(46.1 SQ.M.)



1ST FLOOR
APPROX. FLOOR
AREA 334 SQ.FT.
(31.1 SQ.M.)



2ND FLOOR
APPROX. FLOOR
AREA 279 SQ.FT.
(25.9 SQ.M.)

TOTAL APPROX. FLOOR AREA 1372 SQ.FT. (127.5 SQ.M.)

Made with Metropix ©2018