

Unit 2, Warehouse Mews, Draper Street, Southborough





Unit 2, Warehouse Mews, Draper Street, Southborough, TN4 0PG

A brand new perfectly positioned 3-bedroom mews house

Accommodation Summary

- Exclusive development
 - 3 bedrooms
- Large open plan reception room
- Stylish fully fitted kitchen/dining room
 - Walled courtyard
 - Off street parking
 - New build guarantee



Tel: 01892 514 189

55 London Road, Southborough, Tunbridge Wells, Kent TN4 0PB

natalie@flyingfishproperties.co.uk

www.flyingfishproperties.co.uk



Situated within the characterful 'Warehouse Quarter' this home and its mirror image twin next door, stand out from the neighbouring properties with their distinctive cutting edge design.

Set in a popular village location with local shops, restaurants and pubs on your doorstep you also benefit from the tranquil village offerings of the cricket green, woodland walks and open countryside.

Throw in unrivalled travel links such as easy access to the M25, fast rail connections to central London in under an hour from two local stations and your professional needs are easily met too. If that isn't enough, you can fall out of your door in the morning onto a luxury coach service straight to Canary Wharf, the City, Embankment and other central London destinations at half the cost of rail travel enabling you to slumber or work using its Wi-Fi connectivity as you travel.

The house itself offers chic contemporary living within a mews development. Its impeccable design offers an incredible sense of light and space which has been further complimented by the developer's eye for detail.

The exterior is a smart mix of exposed brick, glass and natural cedar wood which entices you across its neat paved forecourt. There is a wide covered off street parking space with lighting to the side and even the bin store is concealed behind stylish cedar clad doors.

A partially glazed entrance door casts light across the entrance hallway's engineered oak wood floor that stretches through to the rear. The warm wooden accents echo throughout the house, perfectly complimenting its elegant and neutral Farrow & Ball palette which seamlessly links each sensitively designed room.

Under stairs storage and a useful guest cloakroom lead you into the bright room at the back of the ground floor. Double French doors open onto the fabulous walled courtyard which becomes an extension of the room in the warmer months making the space perfect as a second reception room, a study or a third bedroom whatever your needs.

Light streams onto the staircase from a large picture window on the landing above drawing you up to the first floor with its deep walk in storage cupboard.

The jewel in this home's crown is the fabulous living room with its exceptional entertaining space and double French doors at one end through which the sun streams. The streamlined kitchen at the rear of the L shaped room offers an abundance of sleek glossy white cabinetry, counter space and integrated appliances including an AEG oven, 4 ring gas hob and extractor, dishwasher, washing machine and fridge/freezer.





A central island topped with warm oak lets friends sit and chat to you as you cook and the area to the side, perfect for a large table and chairs, means there is tons of space for both dining and living.

Up the stairs to the second floor brightened by a slim picture window on the landing there are two double bedrooms and a gleaming contemporary family bathroom. Both bedrooms on this floor are light and bright, one with windows turning the corner adding character and interest and a ceiling skylight.

This home has been carefully designed to a high quality specification and finish and with its unique contemporary accents and unrivalled travel links it is a must see.

Covered entrance porch to part opaque glazed wooden entrance door, which opens to:

Entrance hall with engineered oak wooden floor, under stairs storage cupboard, radiator and doors to:

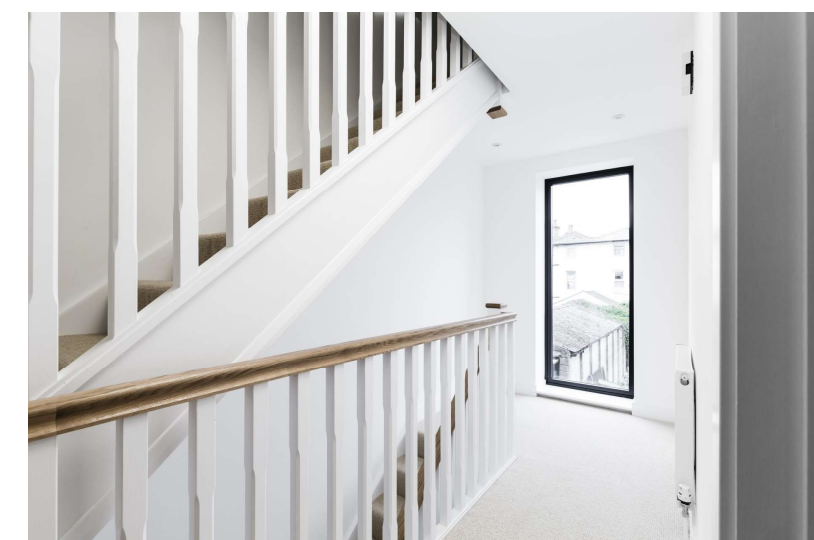
Cloakroom: with tiled floor, low level WC, wall mounted wash hand basin with mixer tap over, inset wall cupboard with internal shelving and radiator.

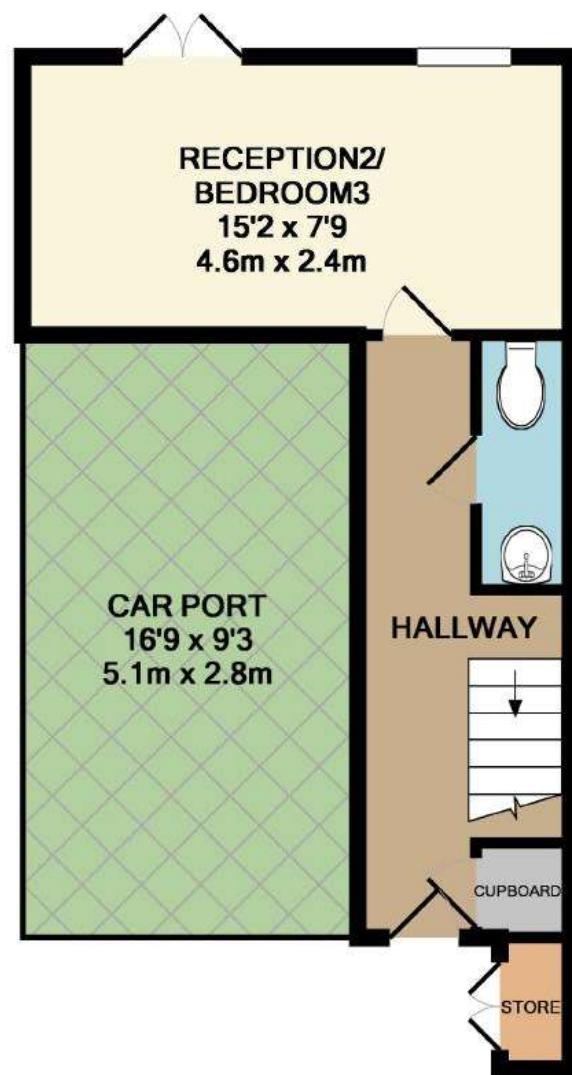
Reception 2/Bedroom 3: 15'2 x 7'9' Rear aspect double glazed window and double glazed French doors with access to the courtyard, engineered oak wood floor and radiator.

Stairs up to first floor landing with floor to ceiling front aspect picture window, deep walk in storage cupboard and doors to:

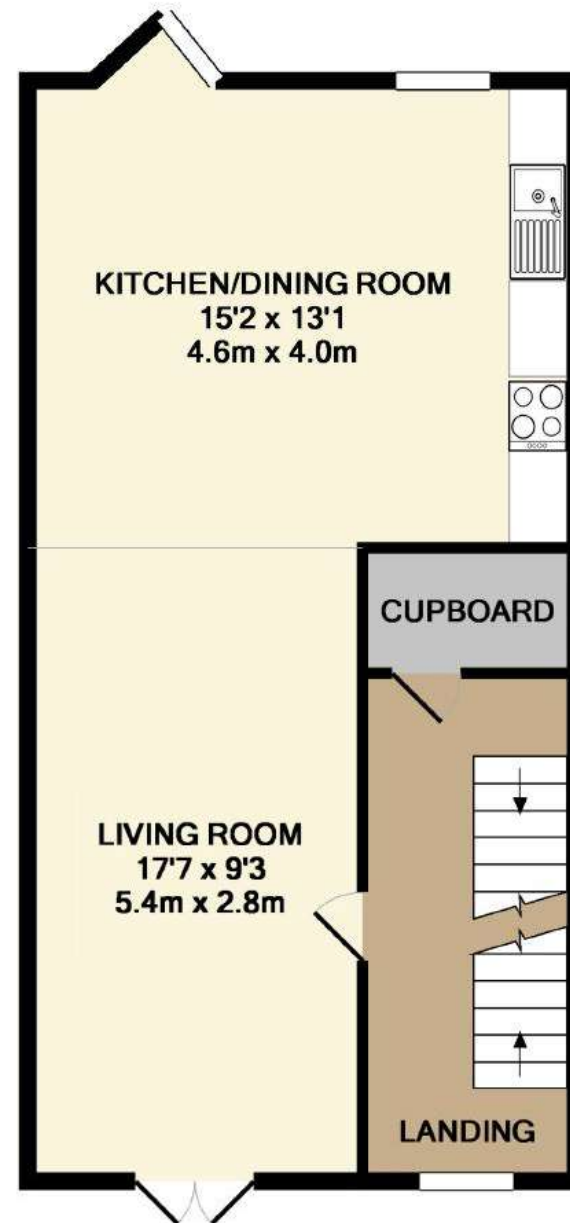
Reception 1/Living Room: 17'7 x 9'3' Front aspect double glazed doors with glass balustrade overlooking the street, engineered oak wood floor and radiator.

Kitchen/Dining Room: 15'2 x 13'1' Rear aspect double glazed opaque window and angled floor to ceiling side aspect double glazed window with inset step and glass balustrade both overlooking the back of the house, electric AEG oven with 4 ring gas hob above, stainless steel extractor fan, inset one and a half stainless steel sink with mixer tap over, integrated dishwasher, integrated fridge/freezer, integrated washing machine, engineered oak wood floor and radiators. The kitchen has contemporary grey wall tiling, plenty of worktop space and a good selection of glossy white eye and base level units, one housing the boiler, with a built in wine rack and under unit lighting. A central island

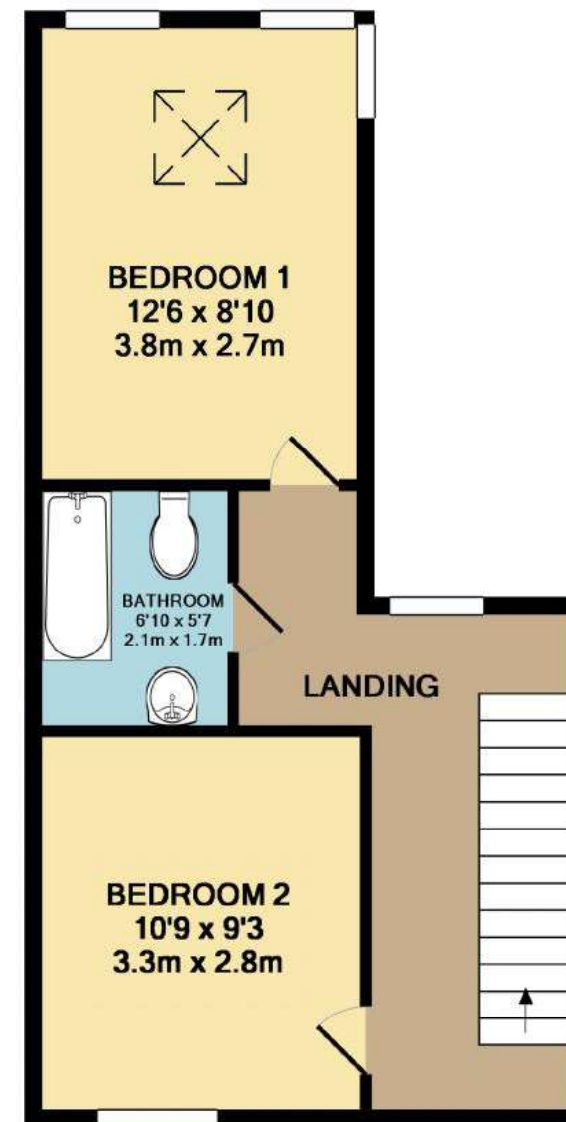




GROUND FLOOR
APPROX. FLOOR
AREA 223 SQ.FT.
(20.7 SQ.M.)



1ST FLOOR
APPROX. FLOOR
AREA 467 SQ.FT.
(43.4 SQ.M.)



2ND FLOOR
APPROX. FLOOR
AREA 366 SQ.FT.
(34.0 SQ.M.)

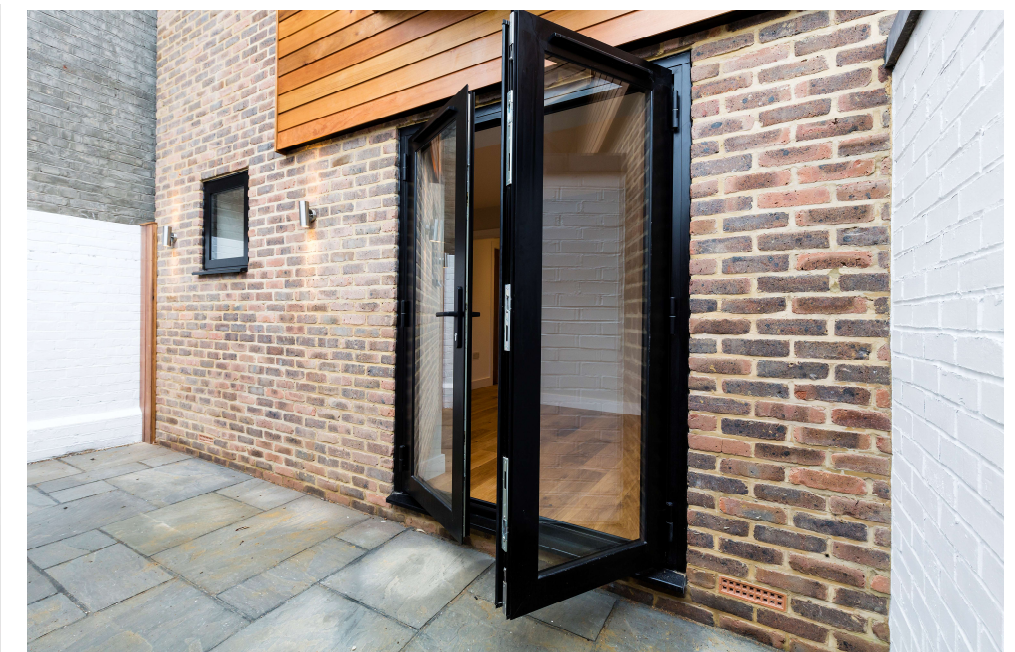
TOTAL APPROX. FLOOR AREA 1057 SQ.FT. (98.2 SQ.M.)

Whilst every attempt has been made to ensure the accuracy of the floor plan contained here, measurements of doors, windows, rooms and any other items are approximate and no responsibility is taken for any error, omission, or mis-statement. This plan is for illustrative purposes only and should be used as such by any prospective purchaser. The services, systems and appliances shown have not been tested and no guarantee as to their operability or efficiency can be given.

Made with Metropix ©2016

Energy Efficiency Rating		
	Current	Potential
Very energy efficient - lower running costs		
(92 Plus) A		86
(81-91) B		
(69-80) C	75	
(55-68) D		
(39-54) E		
(21-38) F		
(1-20) G		
Not energy efficient - higher running costs		
England & Wales	EU Directive 2002/91/EC	

Environmental Impact (CO ₂) Rating		
	Current	Potential
Very environmentally friendly - lower CO ₂ emissions		
(92 Plus) A		84
(81-91) B		
(69-80) C	74	
(55-68) D		
(39-54) E		
(21-38) F		
(1-20) G		
Not environmentally friendly - higher CO ₂ emissions		
England & Wales	EU Directive 2002/91/EC	



with an oak topped worktop with storage cupboards, drawer, pan drawers and electrical points below.

Stairs up to second floor with slim floor to ceiling picture window, loft storage access and doors to:

Bedroom 2: 10'9 x 9'3' Front aspect floor to ceiling double glazed window with views of the street and radiator.

Bathroom: 6'10 x 5'7' Tiled panel enclosed bath with mixer tap over and wall mounted shower fitting and hand held shower attachment, glass shower bath screen, pedestal wash basin with mixer tap over, low level WC, heated towel rail and tiled walls and floor.

Bedroom 1: 12'6 x 8'10' Rear aspect opaque window, corner part opaque floor to ceiling rear and side aspect windows with views of the back of the house, ceiling skylight and radiator.

Car Port: 16'9 x 9'3' To the front is a covered car port with hard floor covering, inset ceiling lighting and a covered bin storage area.

Outside: To the front is a natural stone off street entrance walkway and a covered bin storage area. To the rear is a walled courtyard with natural stone paving and contemporary lighting which is large enough for alfresco dining.

General:

Tenure: Freehold

Local authority: Tunbridge Wells Borough Council

Council tax: Band TBC (subject to HMRC assesment)

EPC: C (75)



