



6 Stourpaine Lodge, Stourpaine, Dorset, DT11 8TD





**APARTMENT 6: Stourpaine Lodge is a unique development of 6 one bedroom apartments, nestled on the outskirts of the popular North Dorset village of Stourpaine.**

Arguably the 'flag ship' listing of the whole apartment, Apartment 6 has its own private access to the rear of the building, with stairs leading to the first floor apartment.

This particular apartment has the added benefit of a secondary room that would be ideal for a office/study and is accessed off the living room, both enjoying far reaching views.

To the rear of the apartment is the bathroom, kitchen and a 'sunken' bedroom.

Given the private access compared to the other apartments we strongly recommend buyers looking for an Air BnB investment to view.

SHARE OF FREEHOLD  
999 YEAR LEASE  
SERVICE CHARGE TBC  
GROUND RENT TBC

**Overview** - This substantial detached Victorian dwelling plays host to six individually designed apartments, each offering unique features, yet all benefiting from parking and communal gardens with far reaching views towards Dorchester and beyond.

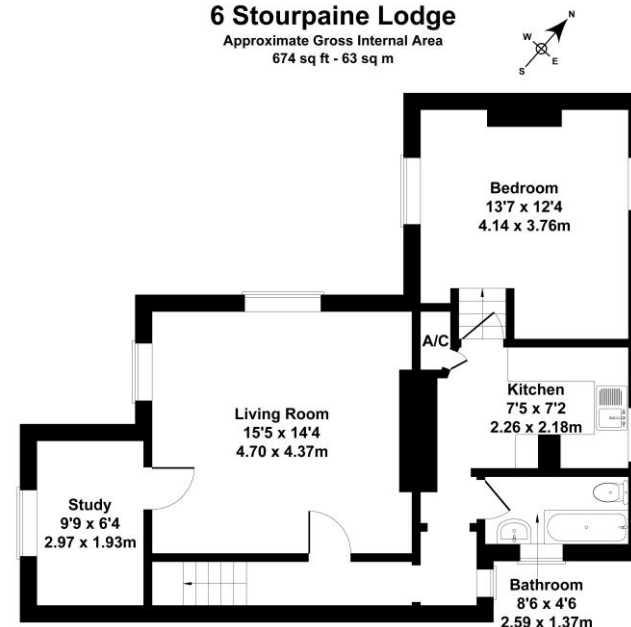
The apartments tick the boxes of a first time buyer looking to get onto the housing ladder, an investor looking for a standard rental or an air bnb in this popular village, or buyers looking for a perfect lock up and leave with little to no maintenance.

The village of Stourpaine has local amenities including Stourpaine Village Hall, Tennis Courts, The White Horse Inn, and the Holy Trinity Church. The Property has a good selection of nearby schools, including Bryanston School, Claysmore School and Bryanston Prep School.

**£250,000 Share of Freehold**

**6 Stourpaine Lodge**

Approximate Gross Internal Area  
674 sq ft - 63 sq m



Not to Scale. Produced by The Plan Portal 2024  
**For Illustrative Purposes Only.**

Please note Forum Sales & Lettings and their client give notice that:

1. They have no authority to make or give any representation or warranties in relations to the property. These particulars do not form part of any offer or contract and must not be relied upon as statements or representations of fact.
2. Any areas, common measurements or distances are approximate. The text, photographs and plans are for guidance only and are not necessarily comprehensive. It should not be assumed that the property has all necessary Planning, Building Regulations or other consents and Forum Sales and Lettings have not tested any services, equipment or facilities. Purchasers must satisfy themselves by inspection or otherwise.

**Viewing Arrangements** - Strictly by appointment with Forum Sales & Lettings

**15 Salisbury Street, Blandford Forum, Dorset, DT11 7AU**

**Tel: 01258 459600**

**EPC Rating - TBC**

**Forum**  
Sales & Lettings