



17 Eastleaze Road, Blandford Forum, Dorset, DT11 7UN



A 1 Bedroom End-Of-Terrace House Situated On The Popular Damory Down Estate Within Walking Distance To The Milldown Nature Reserve. The Property Benefits From Modern Kitchen, Parking & Garden. Tenant In Situ Paying £925pcm

Living Room 13'11" (4.24m) x 13'10" (4.22m)- UPVC part obscure door to front, window to same, stairs to first floor, TV point, telephone point, radiator

Kitchen 10'9" (3.28m) x 7'0" (2.13m)- Range of duck egg blue fronted base and wall units providing cupboard and drawer storage, work-surfaces with tiled splash-backs, solid wood breakfast bar, single sink with drainer inset and mixer tap, space and plumbing for washing machine & dishwasher, space for free-standing fridge/freezer, extractor hood over, window to front aspect, tiled flooring

First Floor Landing -

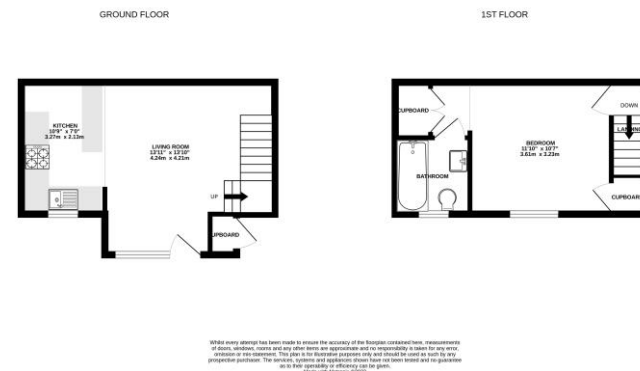
Bedroom 11'10" (3.61m) x 10'7" (3.23m)- Window to front aspect, storage cupboard over stairs, TV point, radiator, built-in double wardrobe housing gas boiler

Bathroom - White suite comprising panelled bath with mixer tap and shower attachment, vanity wash hand basin with mixer tap and storage cupboard under, low level WC, tiled splash-backs, obscure window to front aspect, ladder style radiator, access to roof space, vinyl flooring

Outside - Pathway leading to front door, raised decking area adjacent, remainder being laid to lawn with timber fencing, integral storage cupboard, timber shed

Parking - Allocated parking space immediately adjacent to side of property

£200,000 Freehold



Please note Forum Sales & Lettings and their client give notice that:

1. They have no authority to make or give any representation or warranties in relations to the property. These particulars do not form part of any offer or contract and must not be relied upon as statements or representations of fact.
2. Any areas, common measurements or distances are approximate. The text, photographs and plans are for guidance only and are not necessarily comprehensive. It should not be assumed that the property has all necessary Planning, Building Regulations or other consents and Forum Sales and Lettings have not tested any services, equipment or facilities. Purchasers must satisfy themselves by inspection or otherwise.

Viewing Arrangements - Strictly by appointment with Forum Sales & Lettings

15 Salisbury Street, Blandford Forum, Dorset, DT11 7AU

Tel: 01258 459600

EPC Rating - C

