



Flat 2,19, Salisbury Street, Blandford Forum, Dorset, DT11 7AU



A spacious second floor flat offering two double bedrooms, lounge / dining room, bathroom and kitchen. Located in the centre of Blandford the property further benefits from a parking space. No forward Chain.

Entrance Hallway - Front door leads to the entrance hallway, which gives access to all rooms.

Kitchen - Sliding sash window to the rear aspect, Range of beech fronted base and wall units providing cupboard and drawer storage, worksurface with breakfast bar, single sink with drainer inset, built in oven with hob above. Space for washing machine and fridge.

Living/Dining Room 15'11" (4.85m) x 14'4" (4.37m)- Sliding sash window to the front aspect. Feature fire place.

Bedroom One 14'2" (4.32m) x 12'2" (3.71m)- Sliding sash window to the front aspect, built in cupboards.

Bedroom Two 13'1" (3.99m) x 12'4" (3.76m)- Window to the rear aspect.

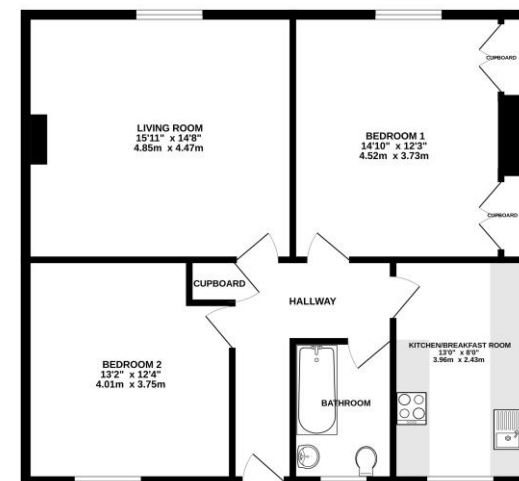
Bathroom - Window to the front aspect. white suite comprising panelled bath, low level WC, wash hand basin, heated towel rail, tiled flooring

Outside - Parking space for one car.

Lease - 125 years from 1989 - 89 years remaining.
Service Charge £150 a month
Ground Rent TBC

£170,000 Leasehold

GROUND FLOOR
821 sq.ft. (76.3 sq.m.) approx.



TOTAL FLOOR AREA: 821 sq.ft. (76.3 sq.m.) approx.
While every effort has been made to ensure the accuracy of the above information, measurements are approximate and should not be relied upon for legal purposes. The actual layout and dimensions of the property may vary from the above. The above information is for guidance only and should not be used as a basis for any legal or financial decision. The actual layout and dimensions of the property may vary from the above. The above information is for guidance only and should not be used as a basis for any legal or financial decision. The actual layout and dimensions of the property may vary from the above. The above information is for guidance only and should not be used as a basis for any legal or financial decision.

Please note Forum Sales & Lettings and their client give notice that:

1. They have no authority to make or give any representation or warranties in relations to the property. These particulars do not form part of any offer or contract and must not be relied upon as statements or representations of fact.
2. Any areas, common measurements or distances are approximate. The text, photographs and plans are for guidance only and are not necessarily comprehensive. It should not be assumed that the property has all necessary Planning, Building Regulations or other consents and Forum Sales and Lettings have not tested any services, equipment or facilities. Purchasers must satisfy themselves by inspection or otherwise.

EPC Rating - C

Viewing Arrangements - Strictly by appointment with Forum Sales & Lettings

15 Salisbury Street, Blandford Forum, Dorset, DT11 7AU

Tel: 01258 459600

