



7 Shottesford Avenue, Blandford Forum, Dorset, DT11 7XU





An extended, four bedroom detached property with a double garage and two en-suites.

Step into a spacious entrance hall with downstairs WC. Wooden flooring leads into a generous lounge featuring a cozy fireplace, and large windows that flood the room with natural light and patio doors to the rear.

The modern kitchen is well-appointed with sleek white cabinetry, integrated appliances, and stylish grey counter tops, complemented by a tiled floor and ample storage. Adjacent is a bright dining room with polished wood flooring, a feature light fixture, and space for entertaining.

Additional ground floor features include a convenient WC and access to a substantial double garage.

Upstairs, the master bedroom is accessed via a office/potential walk-in-wardrobe. It is a tranquil retreat with floral décor, built-in storage, and a private en-suite bathroom. Bedroom two also benefits from its own en-suite, while bedrooms three and four are well-proportioned and served by a modern family bathroom, complete with a bath, mosaic tile detailing, and a heated towel rail.

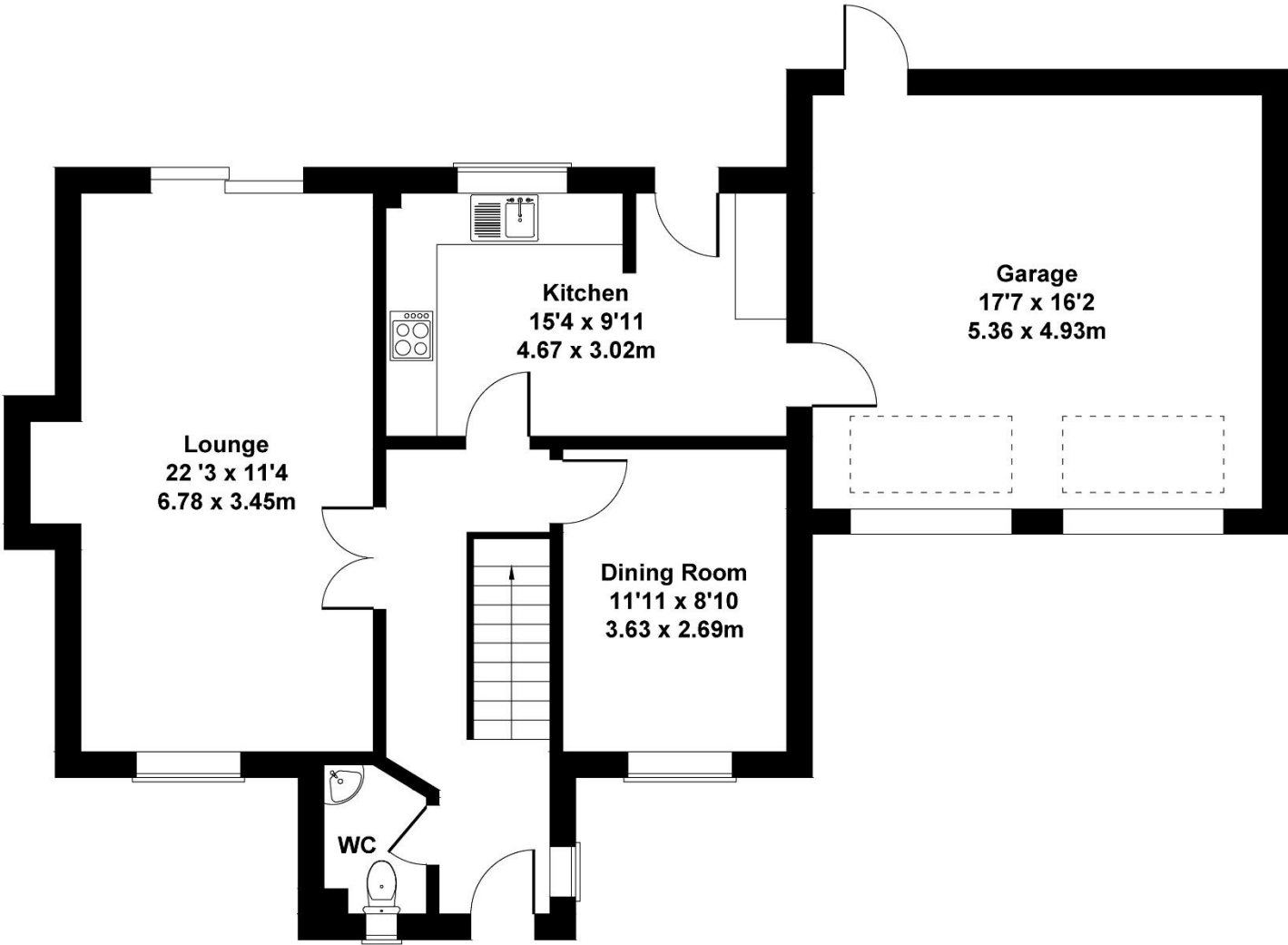


To the front, the property boasts a charming façade with a central dark blue door and a spacious driveway leading to the garage. The south facing rear garden is a delightful outdoor space, featuring a well-maintained lawn, mature borders, and a paved patio area ideal for alfresco dining and relaxation.

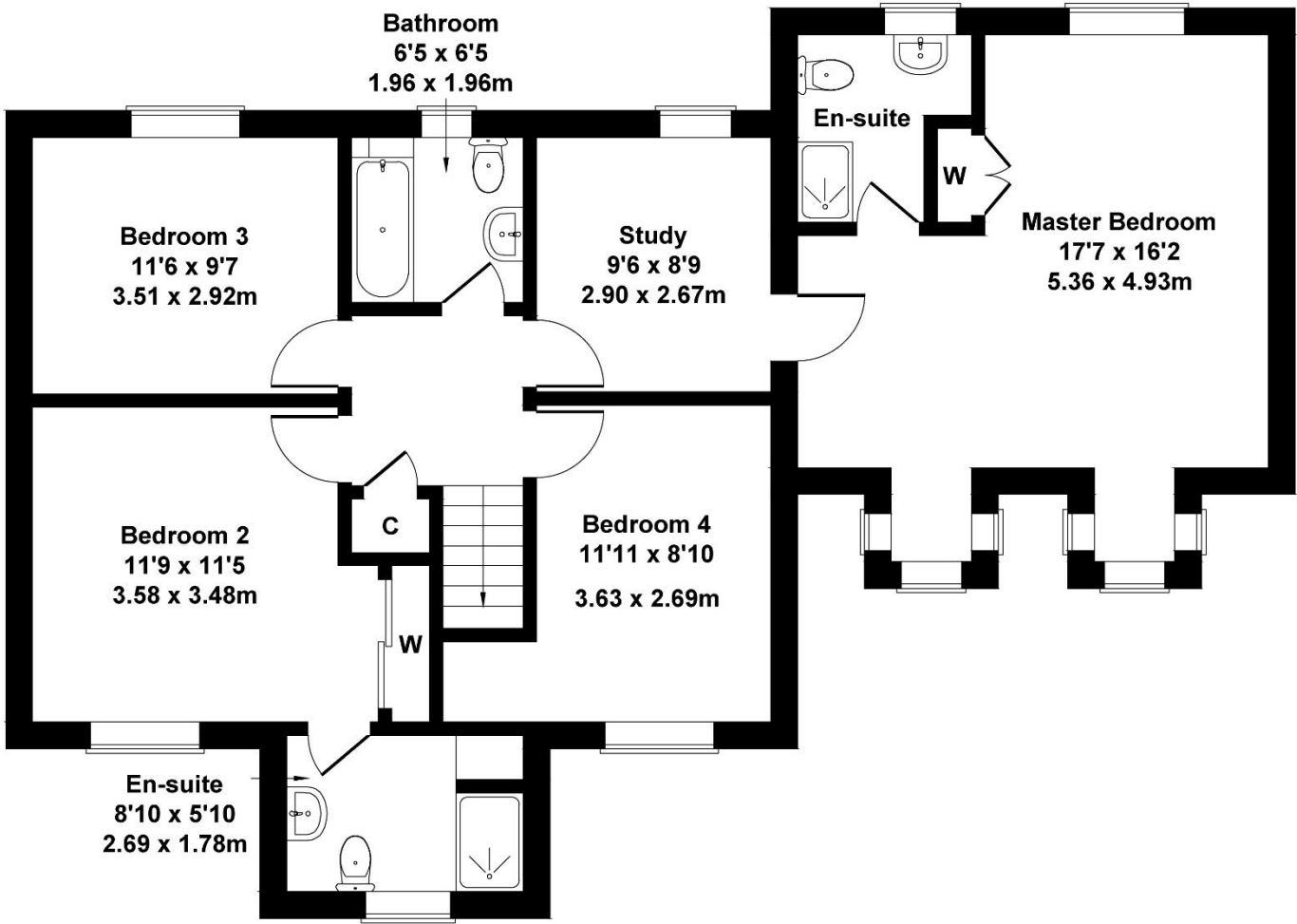


7 Shottesford Avenue

Approximate Gross Internal Area
1937 sq ft - 180 sq m



GROUND FLOOR



FIRST FLOOR

Not to Scale. Produced by The Plan Portal 2025
For Illustrative Purposes Only.

Please note Forum Sales & Lettings and their client give notice that:

1. They have no authority to make or give any representation or warranties in relations to the property. These particulars do not form part of any offer or contract and must not be relied upon as statements or representations of fact.
2. Any areas, common measurements or distances are approximate. The text, photographs and plans are for guidance only and are not necessarily comprehensive. It should not be assumed that the property has all necessary Planning, Building Regulations or other consents and Forum Sales and Lettings have not tested any services, equipment or facilities. Purchasers must satisfy themselves by inspection or otherwise.

EPC Rating - C

Viewing Arrangements - Strictly by appointment with Forum Sales & Lettings

15 Salisbury Street, Blandford Forum, Dorset, DT11 7AU

Tel: 01258 459600