



6 Parva Cottages, Charlton Marshall, Dorset, DT11 9LG









**A superbly presented, extended three bedroom end of terrace brick and flint cottage, located in the popular village of Charlton Marshall.**

Nestled within a charming row of character cottages, Parva Cottages offers a rare opportunity to acquire a beautifully presented three-bedroom home in a peaceful village setting. With its classic brick façade, white-framed windows, and welcoming blue front door, this delightful property exudes warmth and curb appeal. A gravel driveway provides convenient off-road parking, framed by neat green borders that enhance the home's countryside charm.

Inside, the home unfolds into a thoughtfully extended and tastefully styled interior, offering approximately 1,187 sq ft of versatile living space. The heart of the home is the stunning open-plan kitchen and dining area—a bright, sociable space perfect for modern family life. Crisp white cabinetry, a sleek black range cooker, and light countertops combine with skylights and large windows to create a light-filled and inviting atmosphere.

The lounge is equally impressive, offering a cosy retreat, warm wooden flooring, and a charming brick fireplace that serves as a focal point. Natural light pours in through generous double doors, while soft wall sconces and ceiling lights enhance the room's welcoming ambiance. A separate dining room provides additional flexibility, ideal as a home office, snug, or playroom, and a convenient WC completes the ground floor.

Upstairs, three well-proportioned bedrooms provide comfortable accommodation. The principal bedroom is a serene and stylish space, featuring a soft green accent wall, plush grey carpeting, and tasteful décor including framed artwork and floating shelves. A large window with grey curtains allows natural light to fill the room, creating a calm and restful atmosphere. The second and third bedrooms are equally well-appointed, offering flexibility for family, guests, or home working.

The family bathroom is modern and well-finished, featuring a full-sized bathtub with a glass shower screen, beige tiled walls, and a window that brings in natural light.

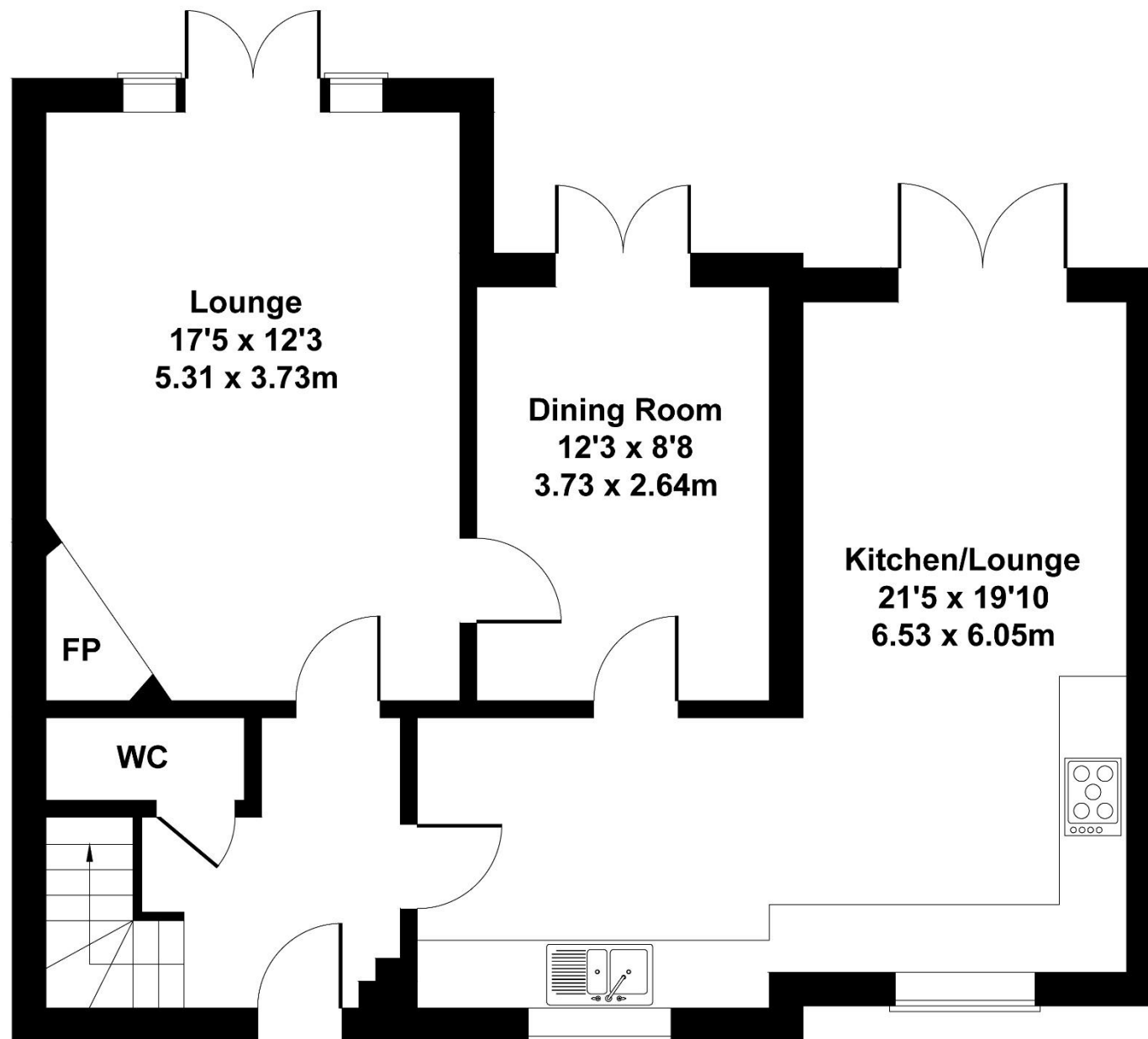
To the rear, the property continues to impress with a generous and well-maintained garden—perfect for both relaxation and recreation. A central lawn is bordered by a patio area ideal for outdoor dining, complete with seating and a barbecue setup. A small tree adds a touch of greenery.

Blending traditional character with contemporary comfort, this charming home is perfectly suited to families, downsizers, or anyone seeking a peaceful retreat within easy reach of local amenities and countryside walks.

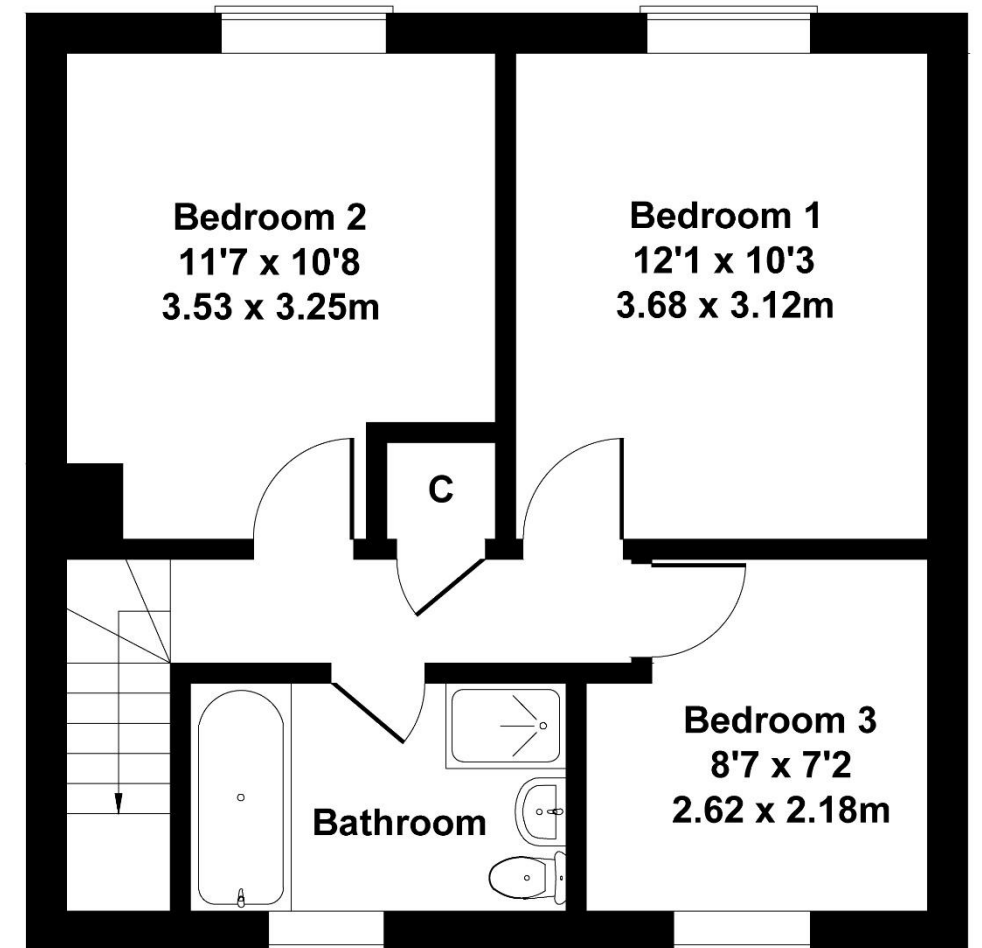


# 6 Parva Cottages

Approximate Gross Internal Area  
1187 sq ft - 110 sq m



**GROUND FLOOR**



**FIRST FLOOR**

Not to Scale. Produced by The Plan Portal 2025  
**For Illustrative Purposes Only.**

Please note Forum Sales & Lettings and their client give notice that:

1. They have no authority to make or give any representation or warranties in relations to the property. These particulars do not form part of any offer or contract and must not be relied upon as statements or representations of fact.

2. Any areas, common measurements or distances are approximate. The text, photographs and plans are for guidance only and are not necessarily comprehensive. It should not be assumed that the property has all necessary Planning, Building Regulations or other consents and Forum Sales and Lettings have not tested any services, equipment or facilities. Purchasers must satisfy themselves by inspection or otherwise.

EPC Rating - C

Viewing Arrangements - Strictly by appointment with Forum Sales & Lettings

15 Salisbury Street, Blandford Forum, Dorset, DT11 7AU

Tel: 01258 459600