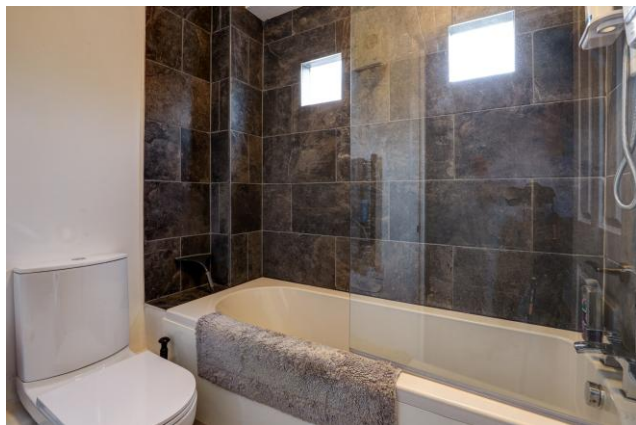




Flat A, 5 Church Lane, Blandford Forum, Dorset, DT11 7AD



An immaculately presented one bedroom first floor flat situated in a pleasant location in the town centre. Perfect for first time buyers or investment buyers.

Set within a charming period building — believed to be a former warehouse — this immaculately presented one-bedroom first floor flat has been recently refurbished to a high standard and is now offered in turn-key condition.

Ideally suited to first-time buyers, investors, or as a convenient lock-up-and-leave holiday home.

Accessed via a secure communal entrance and hallway, the flat combines modern living with character features, offering a spacious layout and excellent natural light throughout.

The good-sized living room provides a comfortable space to relax or entertain, while the contemporary kitchen includes ample storage, and space for a small dining table.

The double bedroom benefits from built-in wardrobes, and the modern bathroom has been stylishly finished.

Located in the heart of the town centre, this property places all local amenities, transport links, and leisure facilities within easy reach, offering both convenience and charm in equal measure.

Offered with no onward chain, early viewing is highly recommended.

Lease Details

125 year lease from 2021 with 120 years remaining

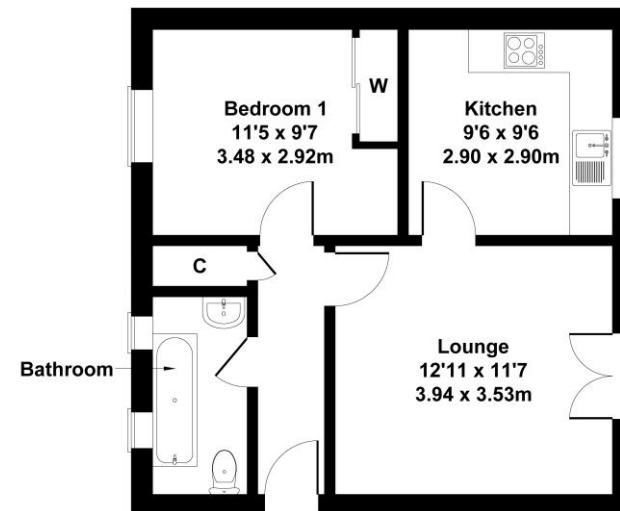
Ground Rent - £125 per annum

Service Charge - £2900 per annum

£135,000 Leasehold

Flat A, 5 Church Lane, Blandford

Approximate Gross Internal Area
464 sq ft - 43 sq m



Not to Scale. Produced by The Plan Portal 2025
For Illustrative Purposes Only.

Please note Forum Sales & Lettings and their client give notice that:

1. They have no authority to make or give any representation or warranties in relations to the property. These particulars do not form part of any offer or contract and must not be relied upon as statements or representations of fact.

2. Any areas, common measurements or distances are approximate. The text, photographs and plans are for guidance only and are not necessarily comprehensive. It should not be assumed that the property has all necessary Planning, Building Regulations or other consents and Forum Sales and Lettings have not tested any services, equipment or facilities. Purchasers must satisfy themselves by inspection or otherwise.

EPC Rating - C

Viewing Arrangements - Strictly by appointment with Forum Sales & Lettings

15 Salisbury Street, Blandford Forum, Dorset, DT11 7AU

Tel: 01258 459600

Forum
Sales & Lettings