



24 Eastleaze Road, Blandford Forum, Dorset, DT11 7UN









**A well presented two bedroom terraced property with parking, situated a stones throw away from The Mildown Nature Reserve.**

Tucked away in a quiet residential setting, this charming two-bedroom home offers a well-balanced layout ideal for modern living. The ground floor welcomes you with a warm and inviting lounge, with wooden flooring and an open staircase.

From here, the space leads into a bright kitchen and dining area, where crisp white cabinetry, sleek worktops, and a striking blue mosaic splashback create a contemporary feel. Glazed doors open out to a thoughtfully landscaped garden, featuring a neat lawn, raised planting beds, and a secluded seating area—perfect for enjoying the outdoors in privacy.

Upstairs, two comfortable bedrooms are served by a stylish shower room, finished with light grey tiling, geometric accents, and a modern glass-enclosed shower. With its practical design, appealing finishes, and attractive outdoor space, this property presents a fantastic opportunity for first-time buyers or those looking to downsize without compromise.

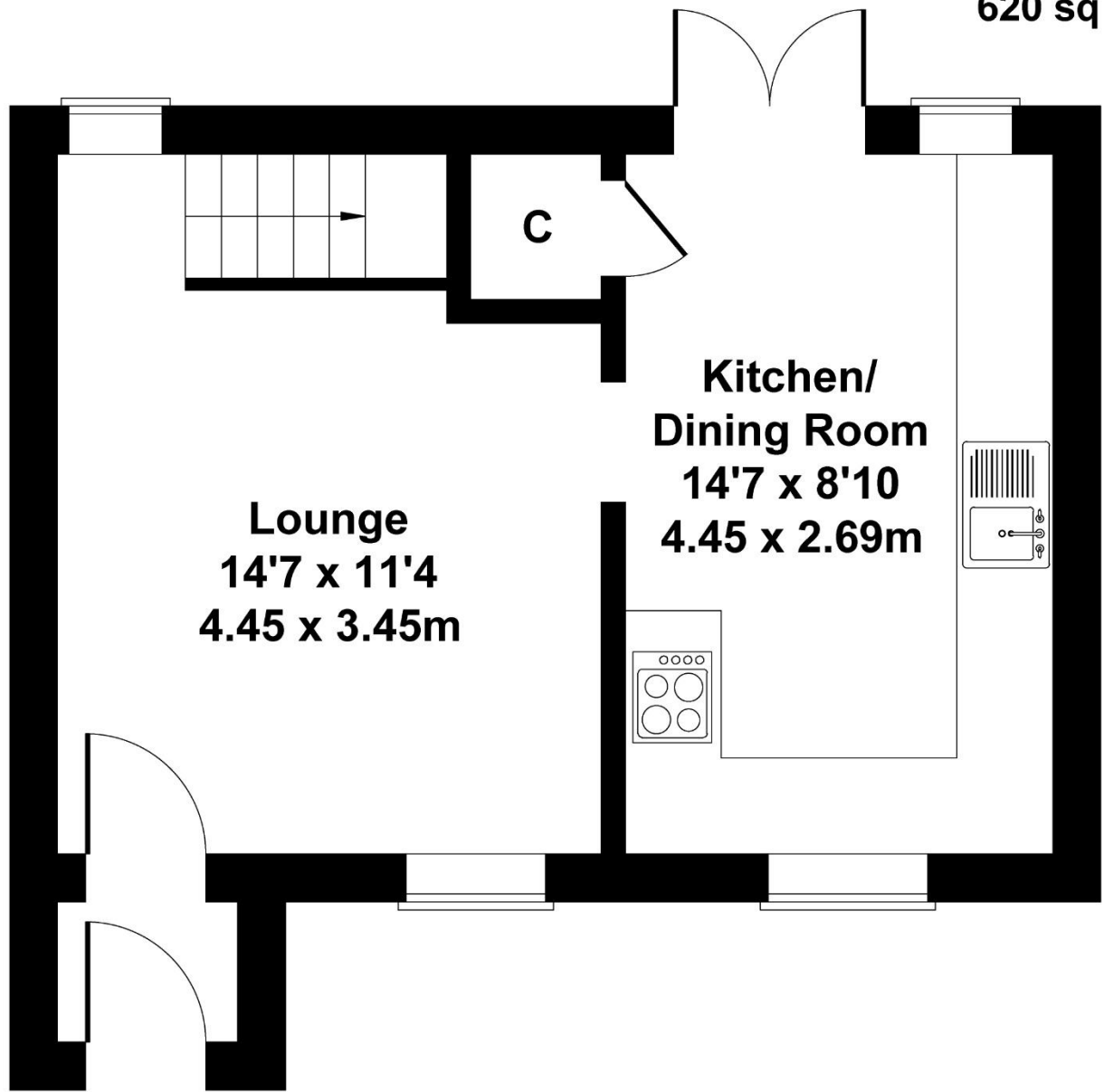


£250,000 Freehold

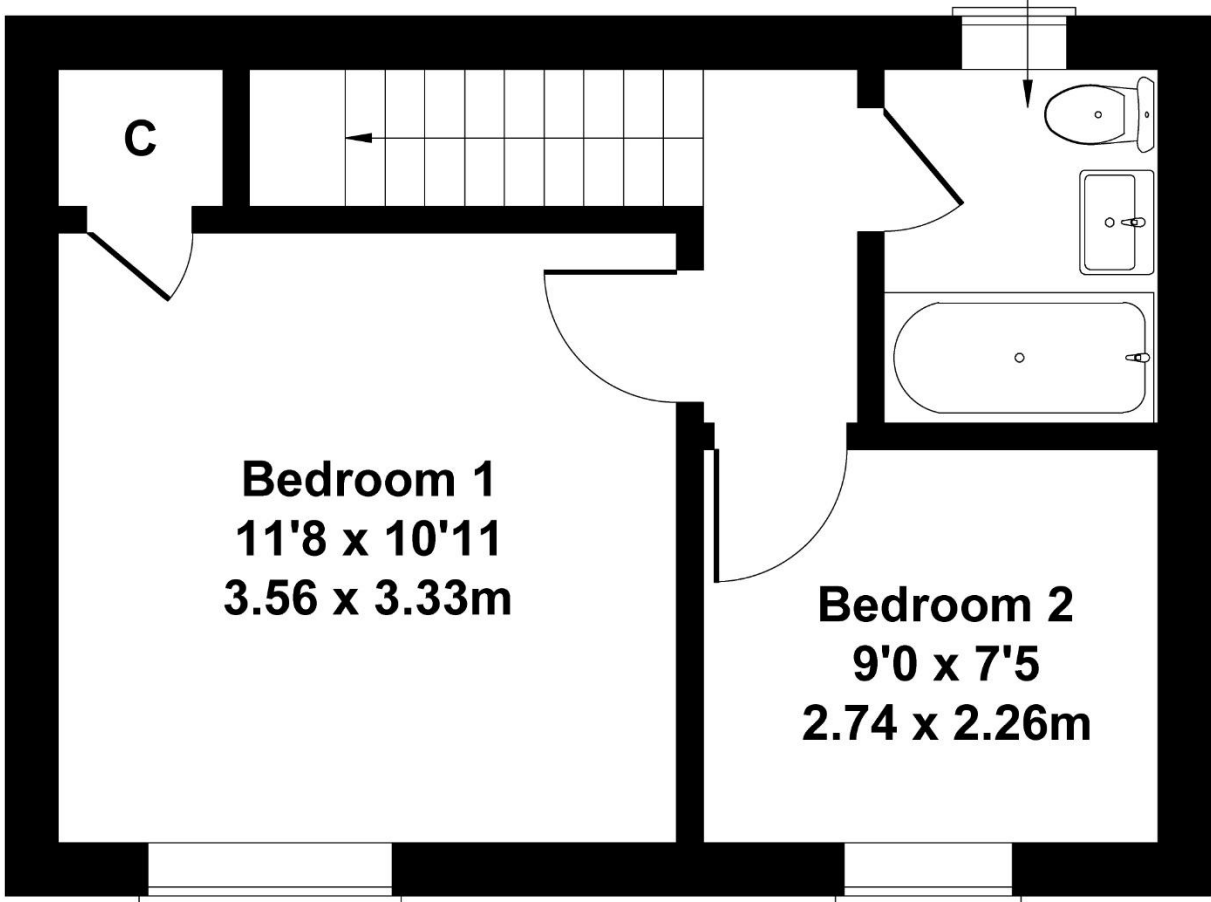
# 24 Eastleaze Road

Approximate Gross Internal Area  
620 sq ft - 58 sq m

**Bathroom**  
**6'11 x 5'9**  
**2.11 x 1.75m**



**GROUND FLOOR**



**FIRST FLOOR**

Not to Scale. Produced by The Plan Portal 2025  
**For Illustrative Purposes Only.**

Please note Forum Sales & Lettings and their client give notice that:

1. They have no authority to make or give any representation or warranties in relations to the property. These particulars do not form part of any offer or contract and must not be relied upon as statements or representations of fact.
2. Any areas, common measurements or distances are approximate. The text, photographs and plans are for guidance only and are not necessarily comprehensive. It should not be assumed that the property has all necessary Planning, Building Regulations or other consents and Forum Sales and Lettings have not tested any services, equipment or facilities. Purchasers must satisfy themselves by inspection or otherwise.

EPC Rating - C

Viewing Arrangements - Strictly by appointment with Forum Sales & Lettings

15 Salisbury Street, Blandford Forum, Dorset, DT11 7AU

Tel: 01258 459600

