



9 Nursery Road, Blandford Forum, Dorset, DT11 7EZ





A three bedroom semi-detached house located a short distance from the town centre with the added benefits of off road parking and an enclosed rear garden.

Just a short walk from the town centre, this spacious three-bedroom semi-detached home combines convenience with potential, offered to the market with NO FORWARD CHAIN.

Set back from the road with off-street parking, it offers a generous layout that's ideal for family living. The ground floor features a bay-fronted lounge that draws in natural light, a well-proportioned kitchen with a practical design, and a separate dining room that flows into a bright conservatory—perfect for enjoying the garden views.

Upstairs, three double bedrooms provide plenty of space for family or guests, complemented by a bathroom.

Outside, the private garden offers room to relax and entertain, with scope for landscaping or further extension to suit your needs. While the property retains character features, it now presents an exciting opportunity for modernisation, allowing you to create a home that reflects your own style.

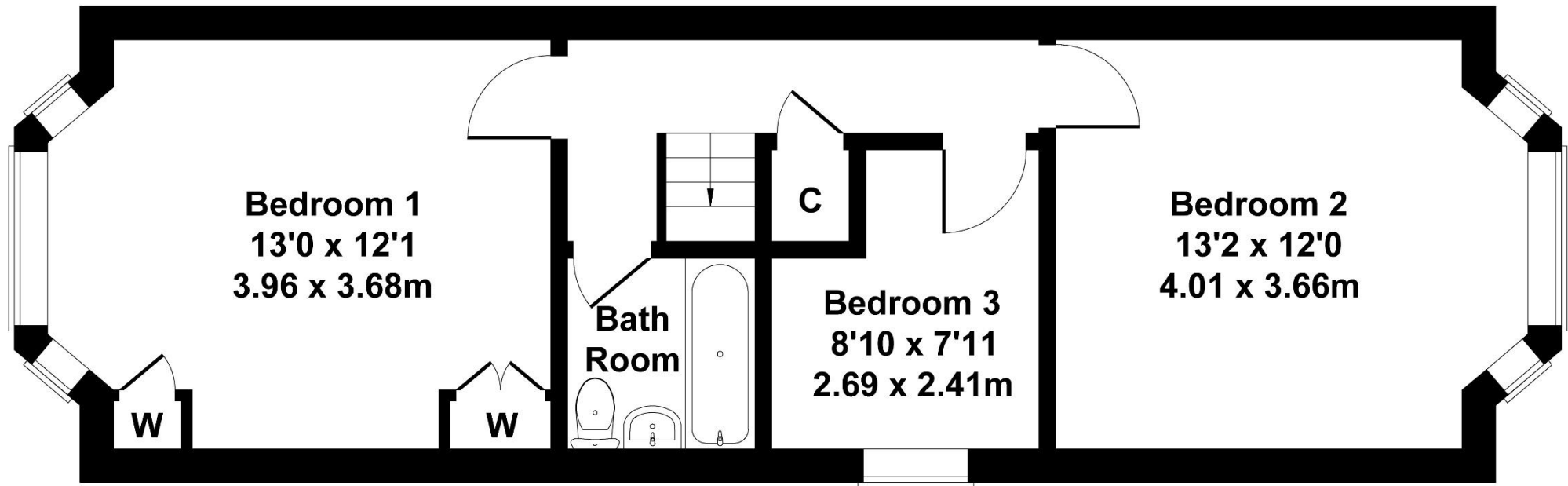
With its excellent location close to local amenities, schools, and transport links, this is a property with both immediate appeal and long-term potential.



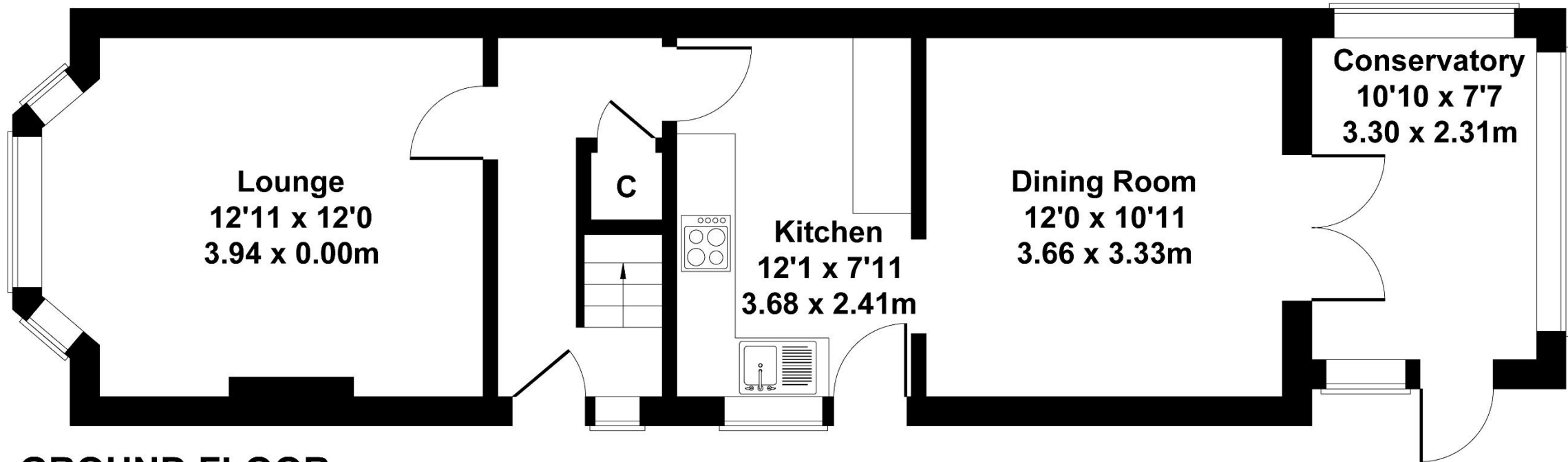
£295,000 Freehold

9 Nursery Road, Blandford Forum

Approximate Gross Internal Area
1098 sq ft - 102 sq m



FIRST FLOOR



GROUND FLOOR

Not to Scale. Produced by The Plan Portal 2025
For Illustrative Purposes Only.

Please note Forum Sales & Lettings and their client give notice that:

1. They have no authority to make or give any representation or warranties in relations to the property. These particulars do not form part of any offer or contract and must not be relied upon as statements or representations of fact.

2. Any areas, common measurements or distances are approximate. The text, photographs and plans are for guidance only and are not necessarily comprehensive. It should not be assumed that the property has all necessary Planning, Building Regulations or other consents and Forum Sales and Lettings have not tested any services, equipment or facilities. Purchasers must satisfy themselves by inspection or otherwise.

EPC Rating - C

Viewing Arrangements - Strictly by appointment with Forum Sales & Lettings

15 Salisbury Street, Blandford Forum, Dorset, DT11 7AU

Tel: 01258 459600

