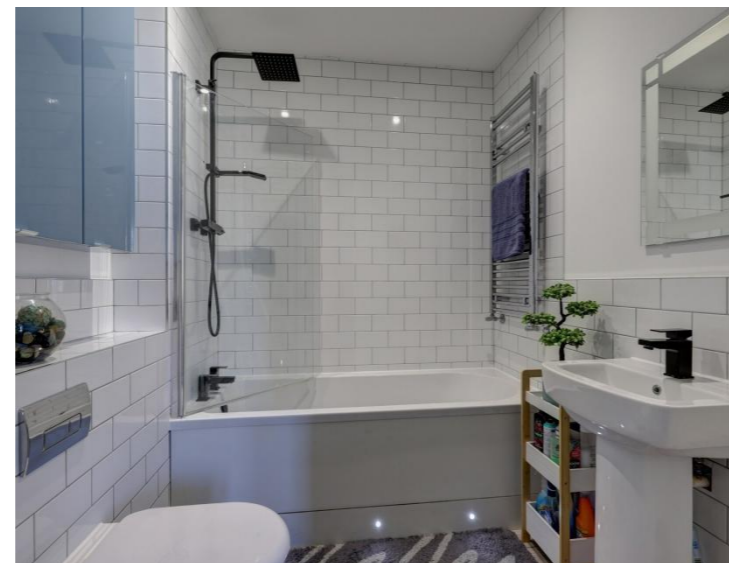




Slopers Lodge, 2a Slopers Mead, Spetisbury, Dorset, DT11 9DR





**A stylish detached bungalow with impressive open-plan living, modern kitchen and bathrooms, generous driveway parking and a landscaped, private garden with covered entertaining space in the heart of Spetisbury.**

**Kitchen / Family Room 21'2" (6.46m) x 20'7" (6.28m)** - A superb dual-aspect open-plan space with grey shaker-style cabinetry, granite worktops and breakfast peninsula, integrated oven and hob, and ample storage. The seating area enjoys a contemporary wood-burning stove, recessed lighting, wide plank flooring and French doors opening to the landscaped rear garden and covered entertaining terrace.

**Hallway** - Central hall connecting the main living space with bedrooms and bathrooms, offering practical circulation space and access to a useful storage cupboard.

**Bedroom 1 13'9" (4.19m) x 11'0" (3.35m)** - Well-proportioned double bedroom with French doors leading directly to a private patio and pond feature within the rear garden, ideal for morning coffee. Includes fitted carpeting, a pleasant garden outlook and access to the en-suite shower room.

**En-suite** - Smart shower room serving Bedroom 2, fitted with a curved glass enclosure and rainfall shower, WC, wash basin, heated towel rail and white metro-tiling, complemented by a frosted window for natural light and privacy.

**Bedroom 2 12'0" (3.66m) x 9'10" (3m)** - Generous double room currently arranged with both sleeping and sitting areas, featuring a bay window to the front, neutral décor and space for freestanding wardrobes and drawers, creating a calm, light-filled retreat.

**Bedroom 3 / Study 7'6" (2.29m) x 7'6" (2.29m)** - Versatile single bedroom, guest room or home office with window to the side, neutral walls and fitted carpet, providing useful flexible accommodation.

**Bathroom** - Beautifully fitted contemporary bathroom with white metro-tiling, panelled bath with rainfall shower over and glass screen, wash basin with mixer tap, concealed cistern WC, heated towel rail and recessed lighting, creating a sleek modern feel.

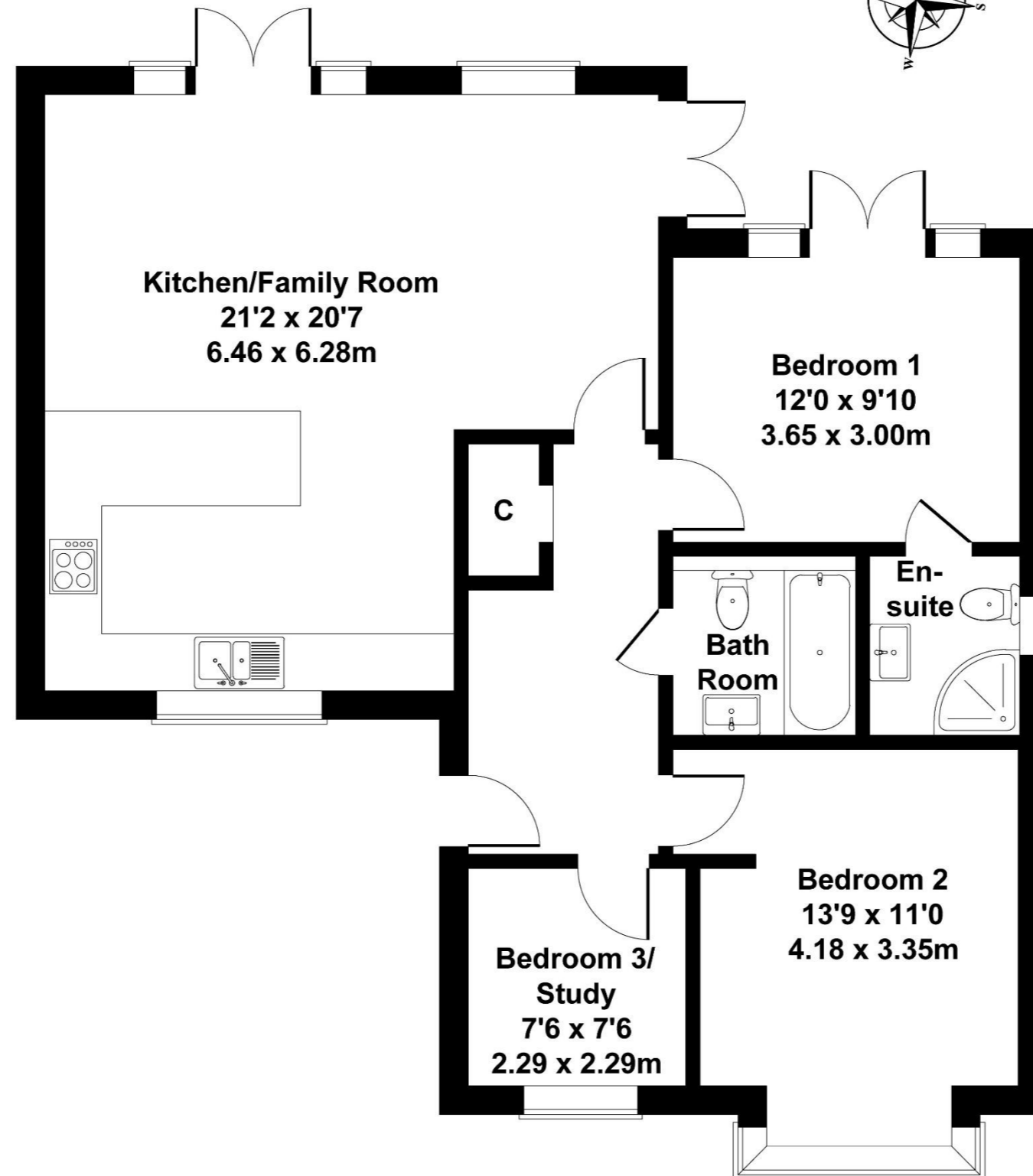
**Driveway and Front Garden** - Private block-paved driveway providing ample off-road parking, bordered by planting and a smart fenced terrace wrapping around the property, giving a welcoming approach and additional seating space.

**Covered Garden Terrace** - Attractive timber-framed, decked seating area with roof, power and lighting, ideal for year-round outdoor entertaining and dining, overlooking the level lawn and well-stocked borders.

**Rear Garden** - Enclosed rear garden with level lawn, paved paths, ornamental pond and water feature, raised beds offering a tranquil, low-maintenance outdoor space with excellent privacy.

# Slopers Lodge

Approximate Gross Internal Area  
893 sq ft - 83 sq m



Not to Scale. Produced by The Plan Portal 2026  
For Illustrative Purposes Only.

Please note Forum Sales & Lettings and their client give notice that:

1. They have no authority to make or give any representation or warranties in relations to the property. These particulars do not form part of any offer or contract and must not be relied upon as statements or representations of fact.

2. Any areas, common measurements or distances are approximate. The text, photographs and plans are for guidance only and are not necessarily comprehensive. It should not be assumed that the property has all necessary Planning, Building Regulations or other consents and Forum Sales and Lettings have not tested any services, equipment or facilities. Purchasers must satisfy themselves by inspection or otherwise.

EPC Rating - C

Viewing Arrangements - Strictly by appointment with Forum Sales & Lettings

15 Salisbury Street, Blandford Forum, Dorset, DT11 7AU

Tel: 01258 459600