



## Askew Crescent W12

Price £1,400,000 Freehold

**GARDINER**  
RESIDENTIAL

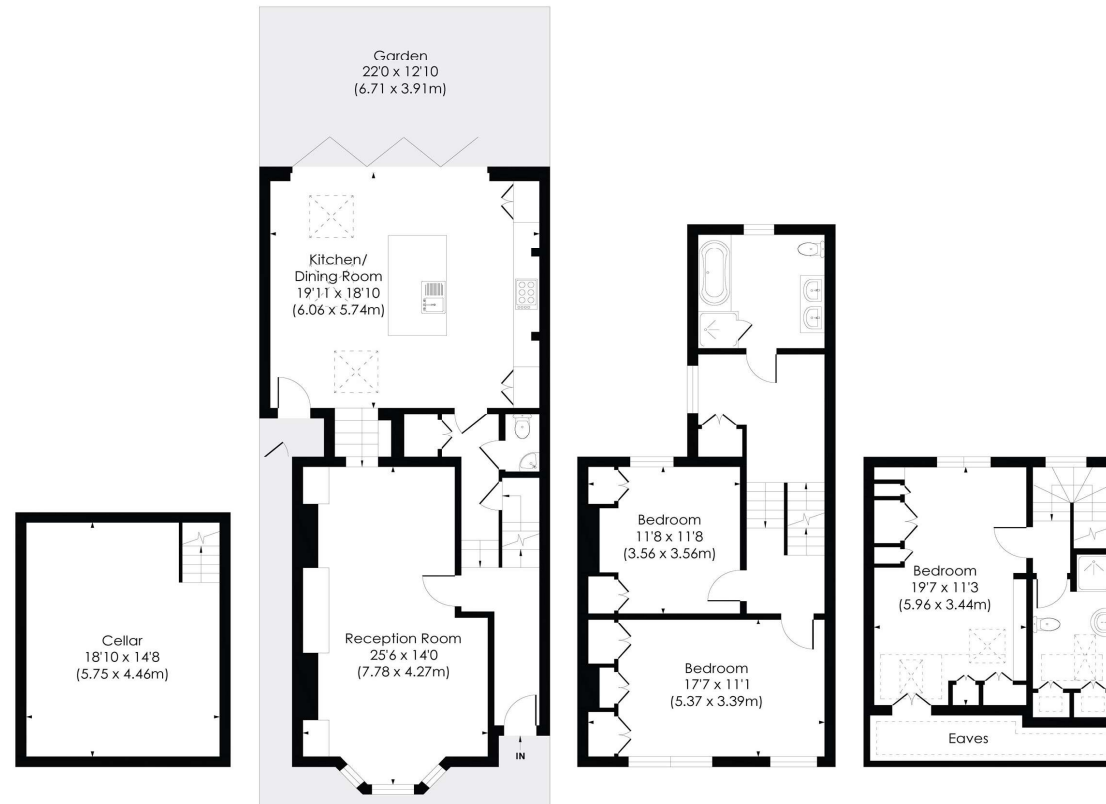


Askew Crescent W12  
Price £1,400,000  
Freehold

This beautiful end-of-terrace Victorian family house, spanning approximately 1805 square feet (167.7 square meters), is elegantly presented and features bay-fronted architecture. It offers versatile family living space across three floors.

Located on a tranquil residential road in North Askew Village, the property enjoys proximity to various transportation links and recreational facilities along Askew Road, The Vale, Uxbridge Road, Shepherd's Bush Green, and Westfield.

The accommodation comprises an entrance hallway, a guest WC, a double reception room that opens onto a 19'1 x 18'10 kitchen diner, and bi-folding doors leading to the patio garden and a spacious cellar. The upper two floors consist of three generously sized bedrooms, two bathrooms, and a large landing area currently utilized as an open-plan office.



4a Spring Bridge Road, Ealing, London W5 2AA Tel: 020 8579 5242 Email: [info@gardinerhomes.co.uk](mailto:info@gardinerhomes.co.uk) [www.gardinerhomes.co.uk](http://www.gardinerhomes.co.uk)

PROPERTY MISDESCRIPTIONS ACT 1991: The Agents has not tested any apparatus, equipment, fixtures and fittings, or services, so cannot verify that they are in working order or fit for the purpose. The buyer is advised to obtain verification from his or her Professional Buyer. References to the Tenure of the property are based on information supplied by the Vendor. The agents have not had sight of the title documents. The buyer is advised to obtain verification from their Solicitor. You are advised to check the availability of any property before travelling any distance to view.

G852 Printed by Ravensworth 01670 713330

