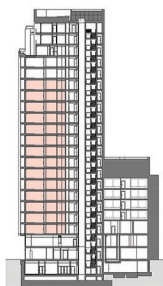
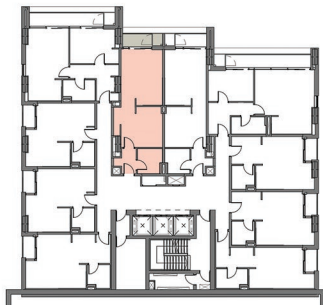
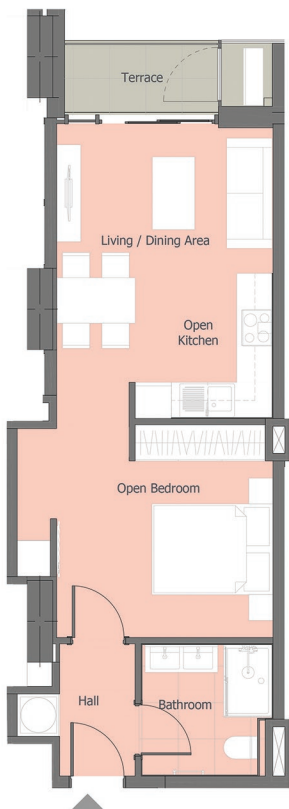


# Deluxe SUITES 05



Available on levels 2-15



## SUITES 0205 - 1505

### STUDIO

Gross Internal Floor Area: 40.3m<sup>2</sup>

Gross External Terrace Area: 4.2m<sup>2</sup>

Sales Office: Chestertons Gibraltar, 20 Ocean Village Promenade, Ocean Village, Gibraltar.  
Tel: +350 200 40041 / [www.e1gibraltar.gi](http://www.e1gibraltar.gi)

Note: These particulars are intended to provide general information only. They do not however constitute an offer or contract or any part thereof and are subject to change, withdrawal or alteration at any time without notice. The photographs and electronically generated images are for illustrative purposes only. All statements contained herein are given without responsibility or liability on the part of the Agents or the Vendor and none of these are to be relied upon as statements or representations of fact. We do not warrant the accuracy or completeness of the information and/or measurements and build sizes may vary. Nothing herein should be relied upon as a representation, warranty or promise in relation to any property or part of this development either from the Agents or the Vendor or any person employed by them and any intending Purchasers must satisfy themselves as to the accuracy.