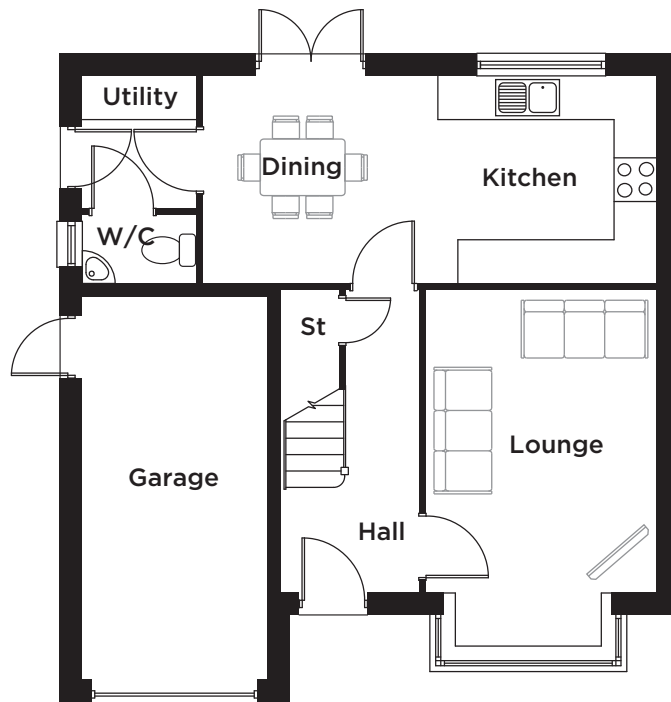


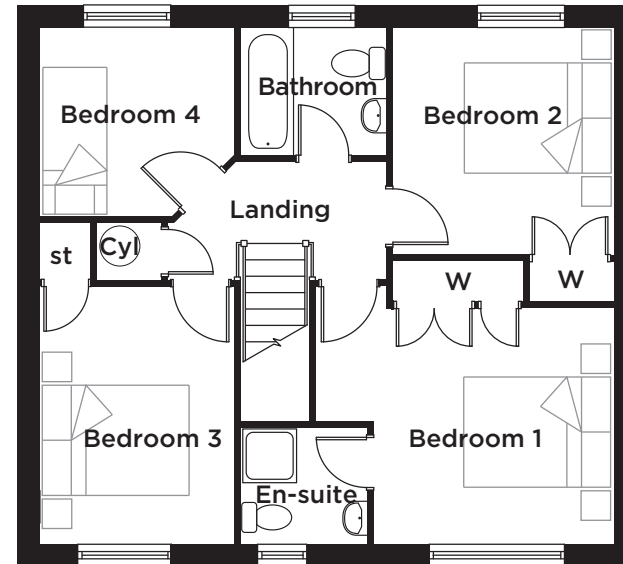
THE CHATHAM

4 Bedroom Detached Home



GROUND FLOOR

LOUNGE	3.15m x 4.77m	10'4" x 15'7"
KITCHEN/DINING	6.21m x 2.80m	20'4" x 9'2"
UTILITY	1.55m x 1.80m	5'1" x 5'11"
W/C	1.55m x 0.90m	5'1" x 2'11"



FIRST FLOOR

BEDROOM 1	4.07m x 3.23m	13'4" x 10'7"
EN-SUITE	1.73m x 1.58m	5'8" x 5'2"
BEDROOM 2	3.06m x 3.04m	10'1" x 9'11"
BEDROOM 3	2.65m x 3.53m	8'8" x 11'7"
BEDROOM 4	2.63m x 2.56m	8'7" x 8'4"
BATHROOM	1.96m x 1.72m	6'5" x 5'8"

Please note: All sizes shown are Maximum room dimensions and exclude wardrobes