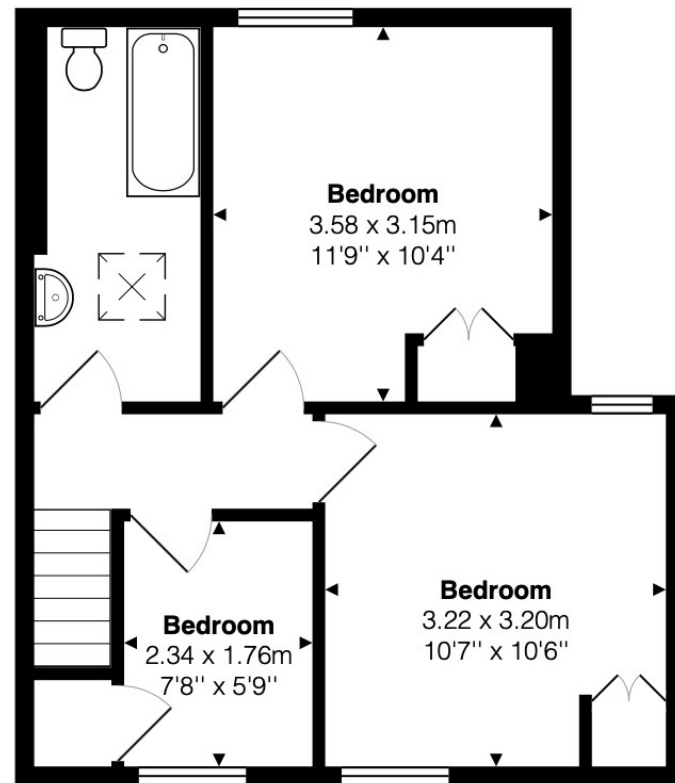


Approx. Floor Area 513 Sq.Ft. (48 Sq.M)

Kitchen
3.72 x 2.72m
12'3" x 8'11"

Sitting Room
4.86 x 4.53m
15'11" x 14'10"

Dining Room
4.84 x 2.30m
15'11" x 7'7"



Approx. Floor Area 401 Sq.Ft. (37 Sq.M)

Bedroom
3.58 x 3.15m
11'9" x 10'4"

Bedroom
2.34 x 1.76m
7'8" x 5'9"

Bedroom
3.22 x 3.20m
10'7" x 10'6"

The approximate total area for the elements of the property represented on the floorplan is 85 SqM (914 Sq.Ft)

60 Brook Street, Watlington, Oxfordshire, OX49 5EH