



9 Chestnut Place, Watlington,  
Oxfordshire, OX49 5RJ

 **Griffith & Partners**  
ESTATE AGENTS, VALUERS AND RESIDENTIAL LETTINGS





## DESCRIPTION

An attractive semi-detached property built in traditional style situated just a short walking distance from the High Street in a quiet courtyard garden setting. Enclosed private garden with parking and garage.

Chestnut Place comprises a variety of traditionally styled houses set around an attractive private courtyard edged with raised planters, ornamental trees and lawned areas. Tucked away from the pretty high street of Watlington

with its artisan shops and amenities which can be reached via a pedestrian walkway.

The interior is well-arranged with some attractive features including a large double reception room which spans the full width of the house and opens onto the rear garden. Downstairs cloakroom along the corridor. Modern shaker style fitted kitchen with a hatch to view over the dining and lounge area.

On the first floor the large principal bedroom overlooks the courtyard and two secondary bedrooms overlook the rear garden. Contemporary family bathroom.

A low maintenance paved and decked garden allows for a sizeable entertaining area. The property has a garage around the corner of the communal courtyard, as well as off road parking in front of the property.



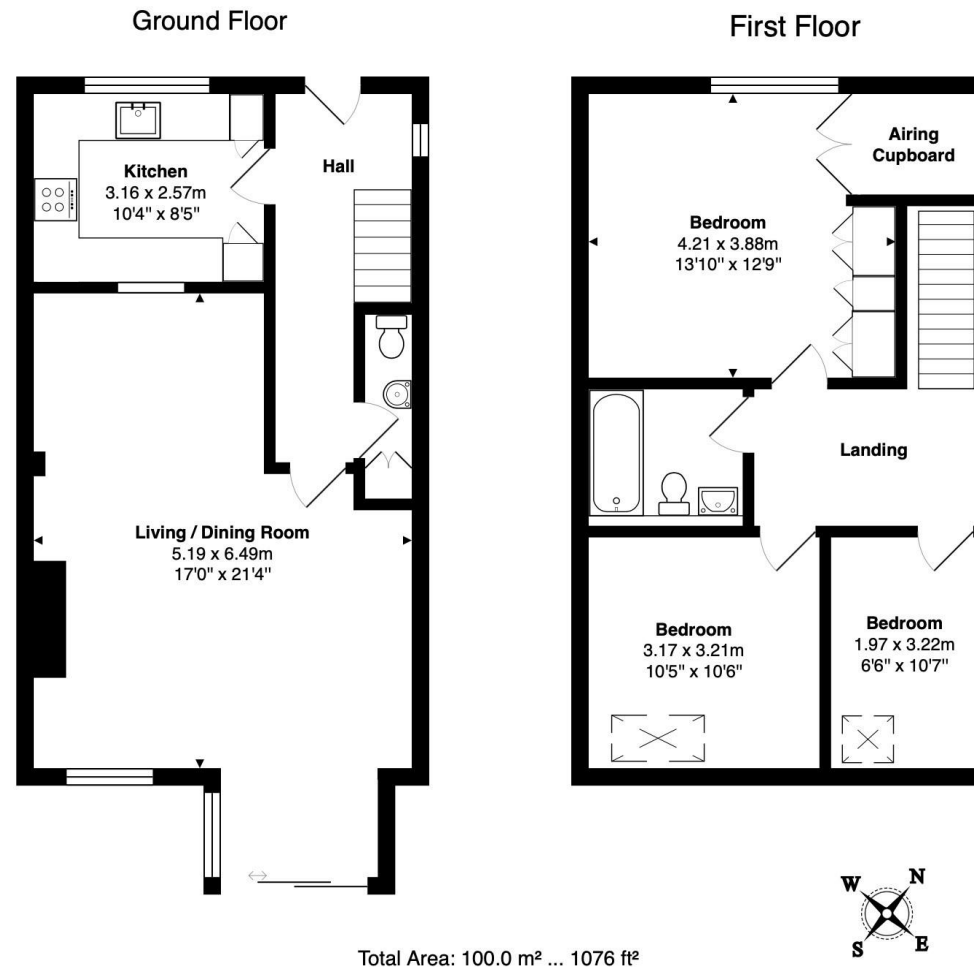


#### EPC RATING:

65 D

#### VIEWING ARRANGEMENT:

Strictly by appointment via Griffith & Partners, the sole agent. Tel 01491 612831/839939.



Disclaimer: It is not our policy to test services and domestic appliances and cannot verify as to their working order. The purchaser should seek expert advice from solicitors/surveyors. Neither these particulars nor oral representation form any part of any contract and their accuracy cannot be guaranteed.

G298

42 High Street, Watlington  
Oxfordshire, OX49 5PY  
01491 612831

33a High Street, Benson  
Oxfordshire, OX10 6RP  
01491 839939

 **Griffith & Partners**  
ESTATE AGENTS, VALUERS AND RESIDENTIAL LETTINGS  
[griffithandpartners.co.uk](http://griffithandpartners.co.uk)