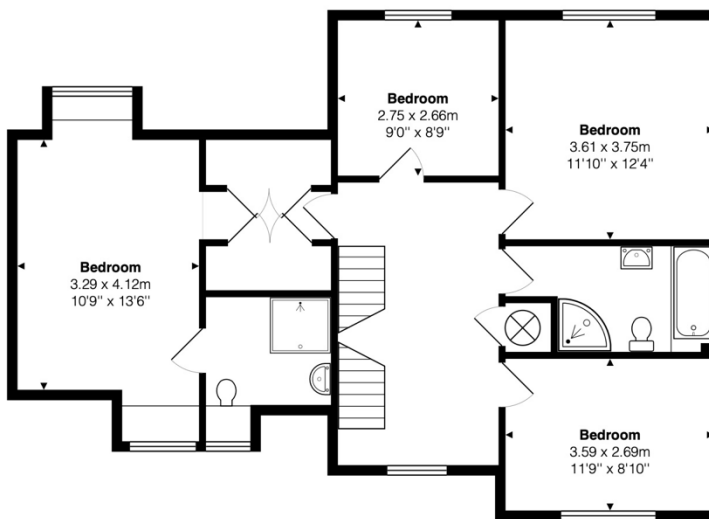
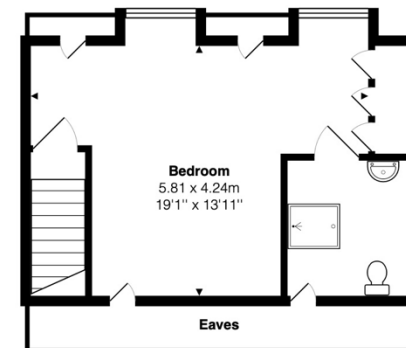


Approx. Floor
Area 11 60 Sq.Ft.
(108 Sq.M)



Approx. Floor
Area 85 2 Sq.Ft.
(79 Sq.M)



Approx. Floor
Area 31 2 Sq.Ft.
(29 Sq.M)

The approximate total area for the elements of the property represented on the floorplan is 216 SqM (2323 Sq.Ft) excluding eaves

Stonor Green, Watlington, Oxfordshire, OX49 5PT