

Burlington Road New Malden KT3

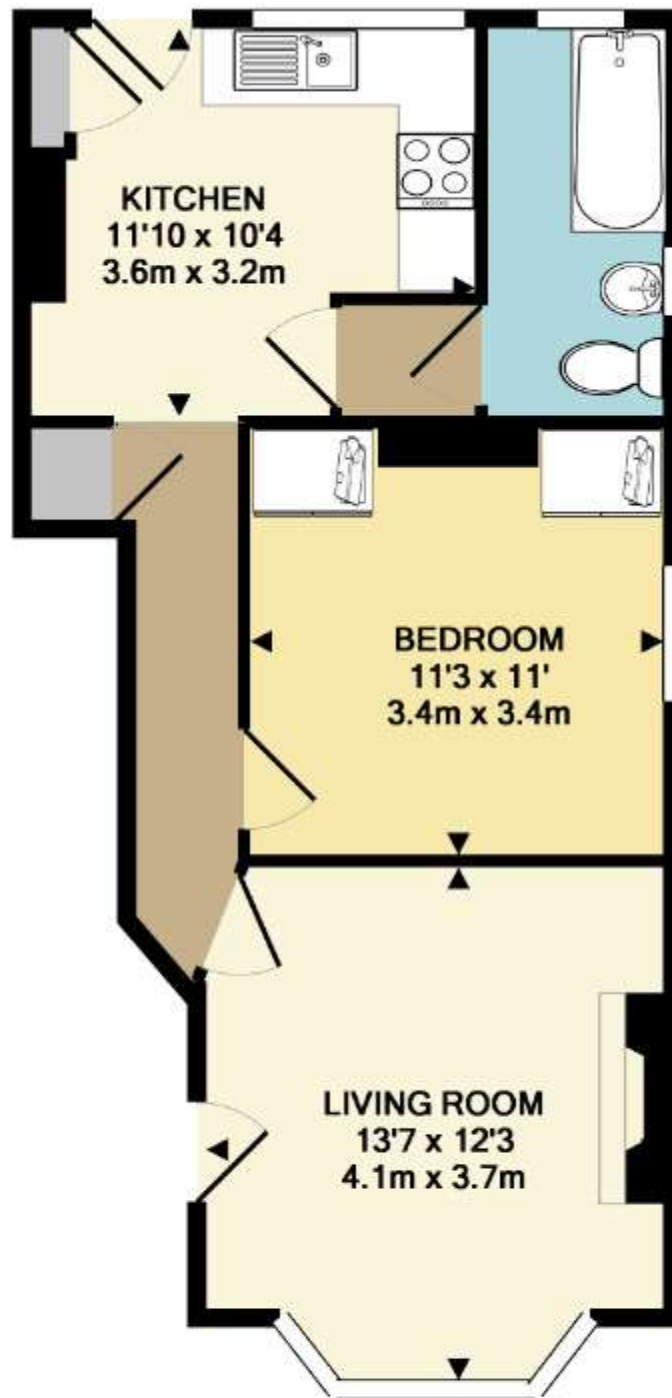


- **One Bedroom Ground Floor Flat**
- **Modern Bathroom and Kitchen**
- **Private Rear Garden**
- **Very Central Location**
- **Furnished**

Price £1,600 pcm

A beautifully presented ground floor conversion flat with direct access to a private rear garden. The property comprises a neutrally decorated front reception room with wood flooring throughout, a double bedroom with built-in wardrobes and a good size fitted kitchen to the rear with direct access onto the private garden. The flat is ideally located for the High Street and is just a short walk to the station as well as several bus routes. Offered furnished and available late October onwards. Security deposit £1,846. Council tax band C. EPC rating E





TOTAL APPROX. FLOOR AREA 491 SQ.FT. (45.6 SQ.M.)

Whilst every attempt has been made to ensure the accuracy of the floor plan contained here, measurements of doors, windows, rooms and any other items are approximate and no responsibility is taken for any error, omission, or mis-statement. This plan is for illustrative purposes only and should be used as such by any prospective purchaser. The services, systems and appliances shown have not been tested and no guarantee as to their operability or efficiency can be given.

Made with Metropix ©2015



