

Dukes Avenue New Malden KT3

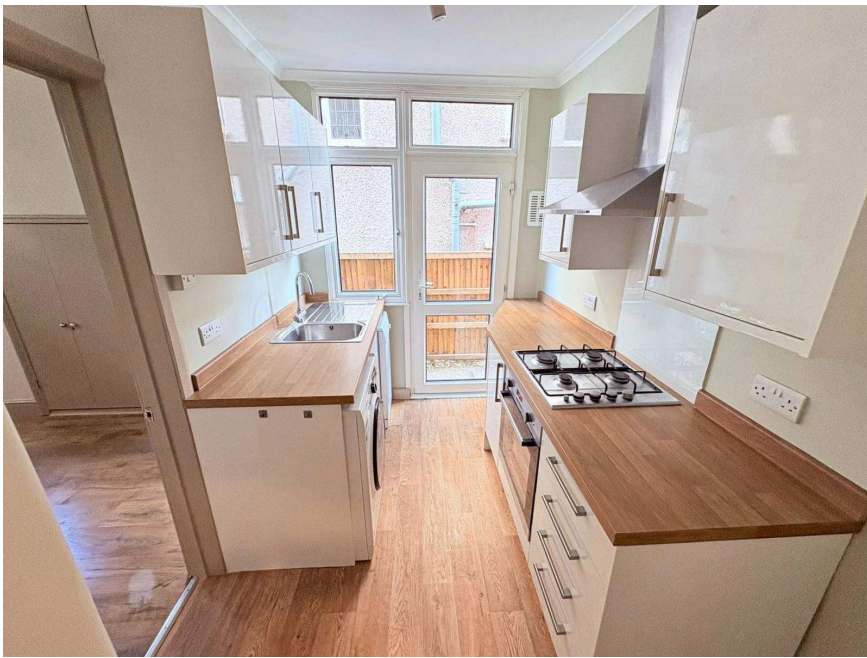


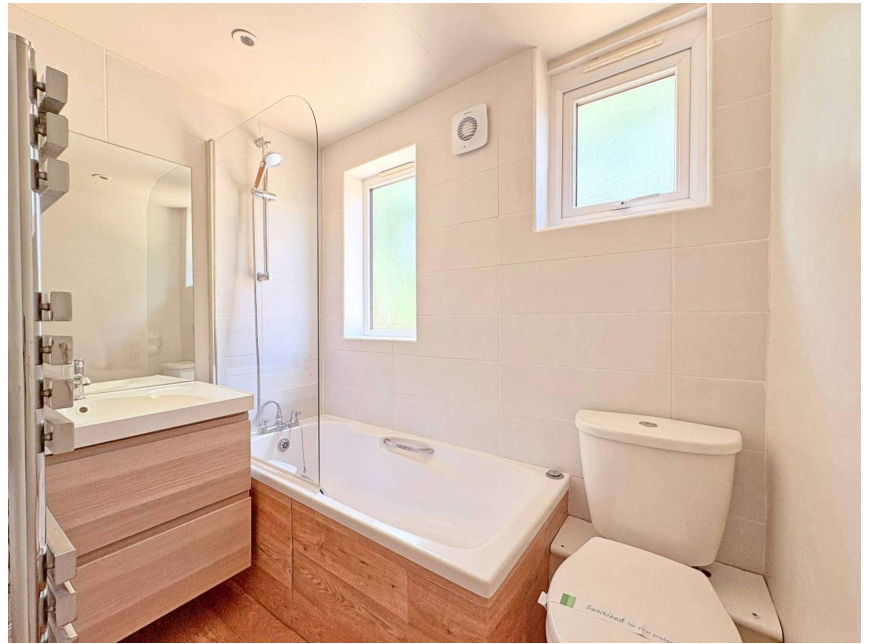
- **Private Front and Rear Gardens**
- **Two Double Bedrooms**
- **Superb Central Location**
- **Recently Redecorated**

Price £2,200 pcm

A wonderful ground floor conversion flat located in this very popular road just moments from the High Street and station. The property has just been redecorated and the accommodation comprises of a good size reception room/bedroom to the front with a large bay window, a double bedroom/living room to the rear, a second double bedroom, a fitted kitchen and a bathroom. There are also private gardens to the front and rear and the rear garden has a new, large decking area with steps down to the lawned garden. The property is available now and is unfurnished. Security deposit £2,538 (based on the asking price). Council tax band C. EPC rating D.









TOTAL APPROX. FLOOR AREA 536 SQ.FT. (49.8 SQ.M.)

Whilst every attempt has been made to ensure the accuracy of the floor plan contained here, measurements of doors, windows, rooms and any other items are approximate and no responsibility is taken for any error, omission, or mis-statement. This plan is for illustrative purposes only and should be used as such by any prospective purchaser. The services, systems and appliances shown have not been tested and no guarantee as to their operability or efficiency can be given

Made with Metropix ©2016