

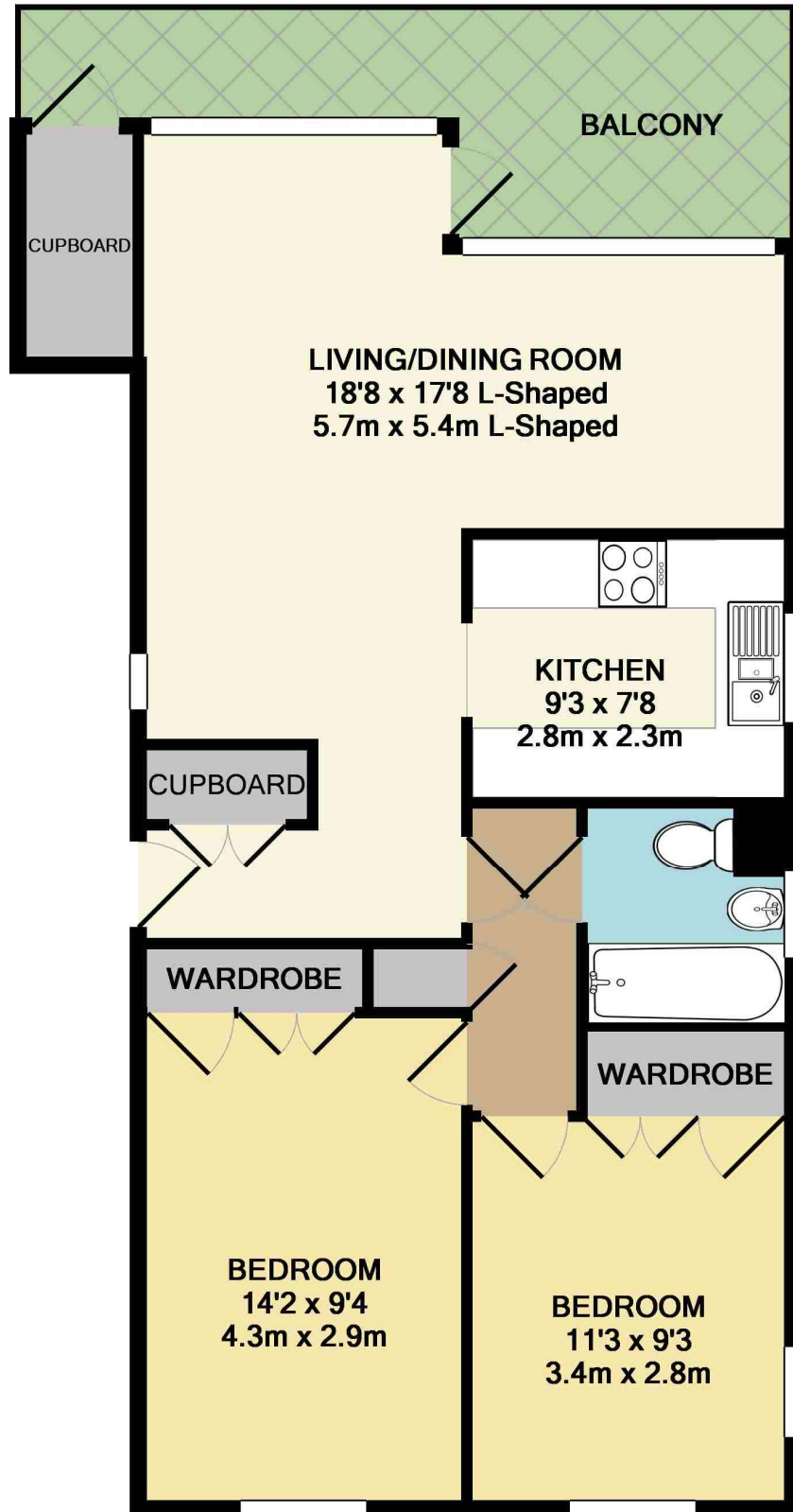
Acacia Grove New Malden KT3



- **Two Double Bedrooms**
- **South Facing Balcony**
- **Allocated Residents Parking**
- **Close to Station & High Street**
- **Excellent Space Throughout**
- **Available Now**

Price £2,200 pcm

Located in the heart of "The Groves" area of New Malden, a top floor apartment set in this popular gated development just a short walk from the High Street and station. The property has a large reception/dining room which opens out to a South facing balcony and further accommodation includes a fitted kitchen, two double bedrooms and a modern bathroom and there is residents parking within the development. The property is available now and unfurnished. Security deposit £2,538 (based on the asking price). Council tax band C. EPC rating E.



TOTAL APPROX. FLOOR AREA 724 SQ.FT. (67.2 SQ.M.)

Whilst every attempt has been made to ensure the accuracy of the floor plan contained here, measurements of doors, windows, rooms and any other items are approximate and no responsibility is taken for any error, omission, or mis-statement. This plan is for illustrative purposes only and should be used as such by any prospective purchaser. The services, systems and appliances shown have not been tested and no guarantee as to their operability or efficiency can be given

Made with Metropix ©2015



